

# Public Scoping Meetings

## Southwest Arkansas Red River Navigation Section 203 Integrated Feasibility Report and Environmental Impact Statement

The U.S. Army Corps of Engineers (USACE), Mississippi Valley Division, Vicksburg District (CEMVK) will be preparing an Environmental Impact Statement (EIS) to evaluate extending shallow-draft navigation up to 135 miles on the Red River from its present terminus at Shreveport, Louisiana into Southwest Arkansas. Under the authority of Section 203 of the Water Resources Development Act (WRDA) of 1986 (Section 203), as amended, the non-Federal Interest, Arkansas Department of Agriculture Natural Resources Division (NRD) will perform the investigation to determine the feasibility of a proposed Southwest Arkansas Red River Navigation (SWARRN) channel.

### Public Scoping Meetings

Two identical public scoping meetings have been scheduled for the following times and locations.

#### **Tuesday, July 30, 2024**

**Louisiana State University in Shreveport**  
**Noel Memorial Library - 3rd Floor (updated)**  
One University Place  
Shreveport, LA 71115

#### **Wednesday, July 31, 2024**

**Texas A&M University – Texarkana**  
University Center – Eagle Hall  
7101 University Ave.  
Texarkana, TX 75503

### Meeting Agenda

3:00 – 5:00 p.m. – Poster Session

5:00 – 7:30 p.m. – Presentation and Public Comment Session

### Background

The existing Red River waterway, known as the J. Bennett Johnston (JBJ) Waterway, is a navigation system that commences at the confluence of Old and Red Rivers and proceeds upstream for 236 miles to the Shreveport-Bossier City area. The JBJ Waterway project consists of a 9-foot-deep by 200-foot-wide navigation channel with five navigation locks. The portion of the Red River above Shreveport, Louisiana is presently unsuitable for commercial navigation. In 2005, USACE completed a draft Feasibility Report for the proposed SWARRN system. At the time of the report, USACE concluded there were not sufficient National Economic Development (NED) benefits to warrant recommending a project plan to authorize and extend shallow-draft navigation upstream of Shreveport, Louisiana. A recent market analysis and economic update completed by USACE showed the potential for improved NED benefits. In addition, USACE guidance allows the consideration of Regional Economic Development, Environmental Quality and other benefits to be applied when evaluating the feasibility of proposed water resources projects. Because of the improved economic benefits conditions, the NRD (non-Federal Interest) has initiated an action to proceed with additional

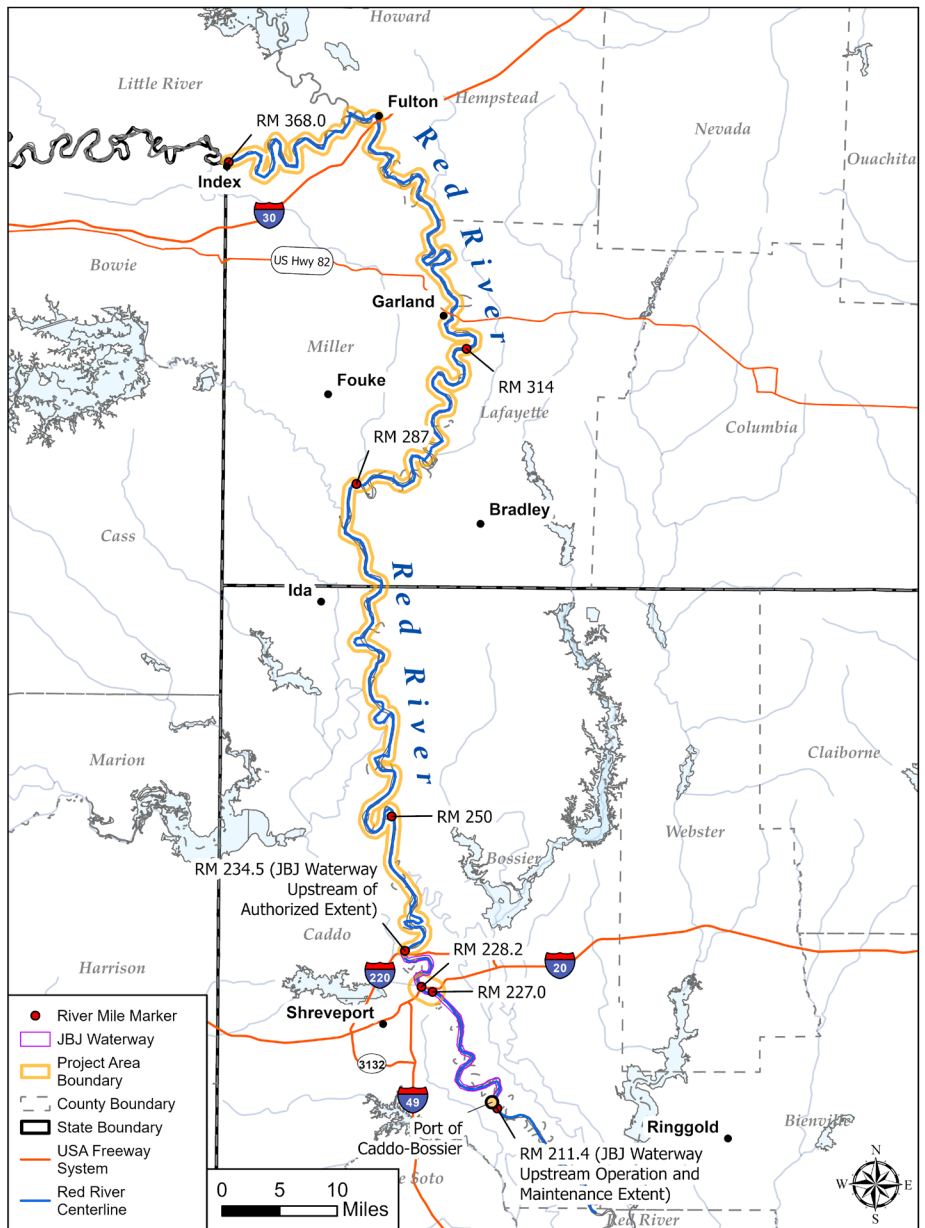


analyses and a feasibility study under the Section 203 authority.

## Public Input

To ensure the USACE has sufficient time to consider public input in the preparation of the Draft EIS, scoping comments should be submitted by email at CEMVK-PPMD-Civil-Works@usace.army.mil, by surface mail to U.S. Army Corps of Engineers, Vicksburg District, Attn: CEMVK-PMP, 4155 Clay St., Vicksburg, MS 39183, or at the Scoping Meeting(s).

To ensure that public comments are considered, members of the public, interested persons and entities must submit their comments to USACE by mail, e-mail, or at the Scoping Meeting(s). All comments and suggestions must be submitted by 30 days after publication of the Notice of Intent (NOI) in the Federal Register. All personally identifiable information (for example, name, address, etc.) voluntarily submitted by a commenter may be publicly accessible. Do not submit confidential business information or otherwise sensitive or protected information.



## Additional Information

Additional information can be found on the USACE project website: <https://www.mvk.usace.army.mil/Missions/Programs-and-Project-Management/Project-Management/SW-Ark-Red-River-Nav-Channel-Extension/>