



**DEPARTMENT OF THE ARMY**  
U.S. ARMY CORPS OF ENGINEERS, VICKSBURG DISTRICT  
4155 CLAY STREET  
VICKSBURG, MISSISSIPPI 39183-3435

January 09, 2024

SUBJECT: Approved Jurisdictional Determination - [REDACTED] Bozeman/Gluckstadt Road  
Property, Madison County, Mississippi



I refer to the additional information submitted regarding a request for a jurisdictional determination for the subject project located in Madison County, Mississippi (enclosure 1).

Based upon the information provided, we have determined that there are jurisdictional areas on the property subject to regulation pursuant to Section 404 of the Clean Water Act. Any work involving the discharge of dredged or fill material (land clearing, ditching, filling, leveeing, etc.) within the limits of the jurisdictional areas identified will require a Department of the Army Section 404 permit prior to beginning work. For your information, I have enclosed a basis of our determination (enclosure 2) and an appeals form (enclosure 3).

For your convenience, I am enclosing a Department of the Army permit application package with instructions (enclosure 4). Your application for any proposed work in wetlands or other waters of the United States should be submitted at least 120 days in advance of the proposed starting date. To expedite the evaluation process, please reference Identification No. MVK-2023-641 when submitting the application.

This approved jurisdictional determination is valid for a period not to exceed five years from the date of this letter unless superseded by law, regulation, or policy change.

The decision regarding this action is based on information found in the administrative record, which documents the District's decision-making process, the basis for the decision, and the final action.

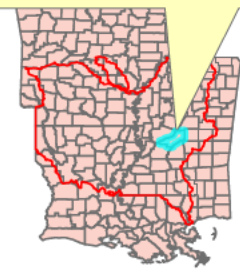
If we may be of any further assistance in this matter, please contact [REDACTED]  
[REDACTED] of this office, telephone [REDACTED], or e-mail address:  
[REDACTED]

Sincerely,

[REDACTED]

Chief, Mississippi Branch  
Regulatory Division

Enclosures



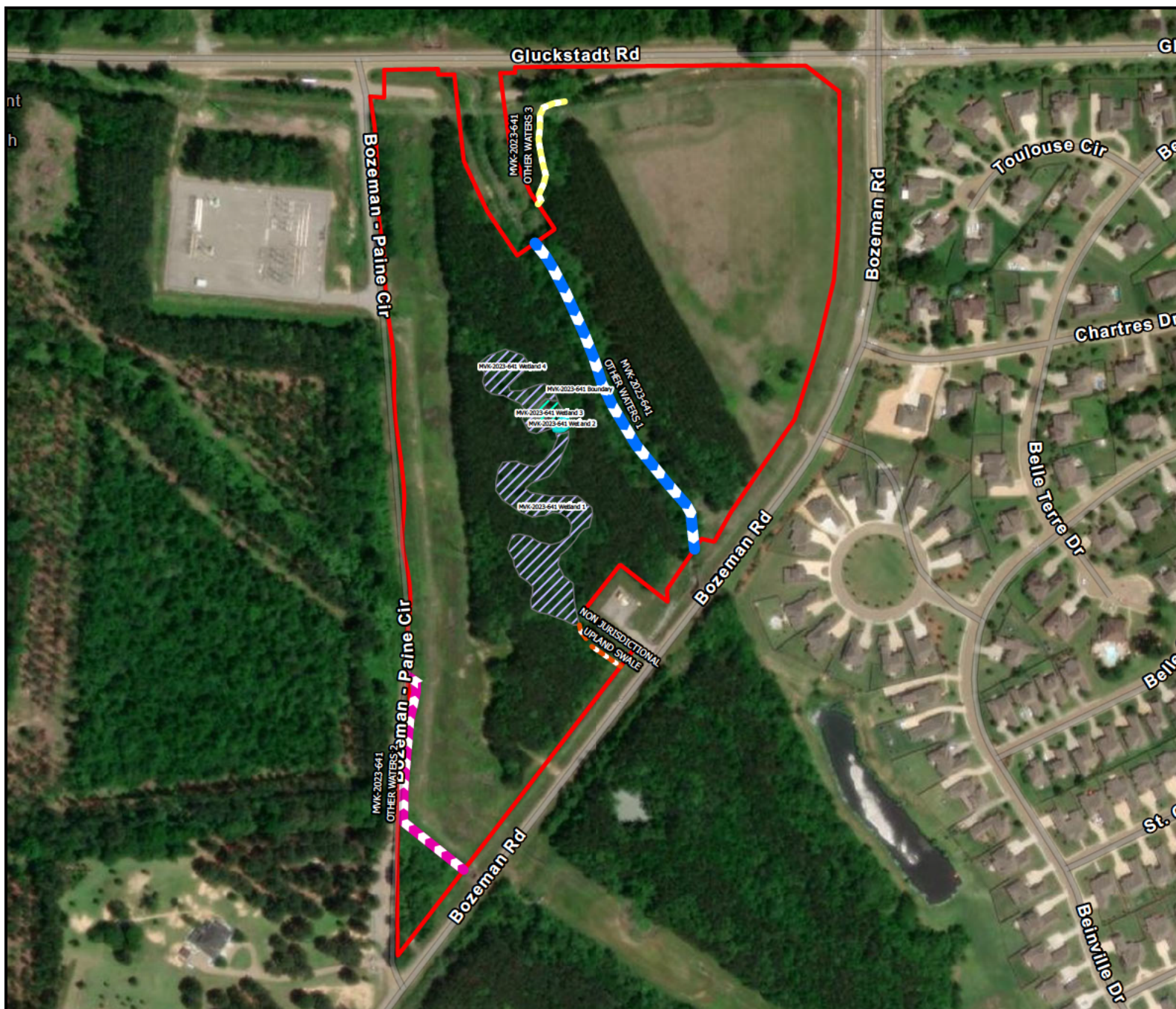
1. *Journal of Management Studies*, 1996, 33(1), 1-14.  
 2. *Journal of Management Studies*, 1996, 33(1), 15-29.  
 3. *Journal of Management Studies*, 1996, 33(1), 31-45.  
 4. *Journal of Management Studies*, 1996, 33(1), 47-61.  
 5. *Journal of Management Studies*, 1996, 33(1), 63-77.  
 6. *Journal of Management Studies*, 1996, 33(1), 79-93.  
 7. *Journal of Management Studies*, 1996, 33(1), 95-109.  
 8. *Journal of Management Studies*, 1996, 33(1), 111-125.  
 9. *Journal of Management Studies*, 1996, 33(1), 127-141.  
 10. *Journal of Management Studies*, 1996, 33(1), 143-157.  
 11. *Journal of Management Studies*, 1996, 33(1), 159-173.  
 12. *Journal of Management Studies*, 1996, 33(1), 175-189.  
 13. *Journal of Management Studies*, 1996, 33(1), 191-205.  
 14. *Journal of Management Studies*, 1996, 33(1), 207-221.  
 15. *Journal of Management Studies*, 1996, 33(1), 223-237.  
 16. *Journal of Management Studies*, 1996, 33(1), 239-253.  
 17. *Journal of Management Studies*, 1996, 33(1), 255-269.  
 18. *Journal of Management Studies*, 1996, 33(1), 271-285.  
 19. *Journal of Management Studies*, 1996, 33(1), 287-301.  
 20. *Journal of Management Studies*, 1996, 33(1), 303-317.  
 21. *Journal of Management Studies*, 1996, 33(1), 319-333.  
 22. *Journal of Management Studies*, 1996, 33(1), 335-349.  
 23. *Journal of Management Studies*, 1996, 33(1), 351-365.  
 24. *Journal of Management Studies*, 1996, 33(1), 367-381.  
 25. *Journal of Management Studies*, 1996, 33(1), 383-397.  
 26. *Journal of Management Studies*, 1996, 33(1), 399-413.  
 27. *Journal of Management Studies*, 1996, 33(1), 415-429.  
 28. *Journal of Management Studies*, 1996, 33(1), 431-445.  
 29. *Journal of Management Studies*, 1996, 33(1), 447-461.  
 30. *Journal of Management Studies*, 1996, 33(1), 463-477.  
 31. *Journal of Management Studies*, 1996, 33(1), 479-493.  
 32. *Journal of Management Studies*, 1996, 33(1), 495-509.  
 33. *Journal of Management Studies*, 1996, 33(1), 511-525.  
 34. *Journal of Management Studies*, 1996, 33(1), 527-541.  
 35. *Journal of Management Studies*, 1996, 33(1), 543-557.  
 36. *Journal of Management Studies*, 1996, 33(1), 559-573.  
 37. *Journal of Management Studies*, 1996, 33(1), 575-589.  
 38. *Journal of Management Studies*, 1996, 33(1), 591-605.  
 39. *Journal of Management Studies*, 1996, 33(1), 607-621.  
 40. *Journal of Management Studies*, 1996, 33(1), 623-637.  
 41. *Journal of Management Studies*, 1996, 33(1), 639-653.  
 42. *Journal of Management Studies*, 1996, 33(1), 655-669.  
 43. *Journal of Management Studies*, 1996, 33(1), 671-685.  
 44. *Journal of Management Studies*, 1996, 33(1), 687-701.  
 45. *Journal of Management Studies*, 1996, 33(1), 703-717.  
 46. *Journal of Management Studies*, 1996, 33(1), 719-733.  
 47. *Journal of Management Studies*, 1996, 33(1), 735-749.  
 48. *Journal of Management Studies*, 1996, 33(1), 751-765.  
 49. *Journal of Management Studies*, 1996, 33(1), 767-781.  
 50. *Journal of Management Studies*, 1996, 33(1), 783-797.  
 51. *Journal of Management Studies*, 1996, 33(1), 799-813.  
 52. *Journal of Management Studies*, 1996, 33(1), 815-829.  
 53. *Journal of Management Studies*, 1996, 33(1), 831-845.  
 54. *Journal of Management Studies*, 1996, 33(1), 847-861.  
 55. *Journal of Management Studies*, 1996, 33(1), 863-877.  
 56. *Journal of Management Studies*, 1996, 33(1), 879-893.  
 57. *Journal of Management Studies*, 1996, 33(1), 895-909.  
 58. *Journal of Management Studies*, 1996, 33(1), 911-925.  
 59. *Journal of Management Studies*, 1996, 33(1), 927-941.  
 60. *Journal of Management Studies*, 1996, 33(1), 943-957.  
 61. *Journal of Management Studies*, 1996, 33(1), 959-973.  
 62. *Journal of Management Studies*, 1996, 33(1), 975-989.  
 63. *Journal of Management Studies*, 1996, 33(1), 991-1005.  
 64. *Journal of Management Studies*, 1996, 33(1), 1007-1021.  
 65. *Journal of Management Studies*, 1996, 33(1), 1023-1037.  
 66. *Journal of Management Studies*, 1996, 33(1), 1039-1053.  
 67. *Journal of Management Studies*, 1996, 33(1), 1055-1069.  
 68. *Journal of Management Studies*, 1996, 33(1), 1071-1085.  
 69. *Journal of Management Studies*, 1996, 33(1), 1087-1101.  
 70. *Journal of Management Studies*, 1996, 33(1), 1103-1117.  
 71. *Journal of Management Studies*, 1996, 33(1), 1119-1133.  
 72. *Journal of Management Studies*, 1996, 33(1), 1135-1149.  
 73. *Journal of Management Studies*, 1996, 33(1), 1151-1165.  
 74. *Journal of Management Studies*, 1996, 33(1), 1167-1181.  
 75. *Journal of Management Studies*, 1996, 33(1), 1183-1197.  
 76. *Journal of Management Studies*, 1996, 33(1), 1199-1213.  
 77. *Journal of Management Studies*, 1996, 33(1), 1215-1229.  
 78. *Journal of Management Studies*, 1996, 33(1), 1231-1245.  
 79. *Journal of Management Studies*, 1996, 33(1), 1247-1261.  
 80. *Journal of Management Studies*, 1996, 33(1), 1263-1277.  
 81. *Journal of Management Studies*, 1996, 33(1), 1279-1293.  
 82. *Journal of Management Studies*, 1996, 33(1), 1295-1309.  
 83. *Journal of Management Studies*, 1996, 33(1), 1311-1325.  
 84. *Journal of Management Studies*, 1996, 33(1), 1327-1341.  
 85. *Journal of Management Studies*, 1996, 33(1), 1343-1357.  
 86. *Journal of Management Studies*, 1996, 33(1), 1359-1373.  
 87. *Journal of Management Studies*, 1996, 33(1), 1375-1389.  
 88. *Journal of Management Studies*, 1996, 33(1), 1391-1405.  
 89. *Journal of Management Studies*, 1996, 33(1), 1407-1421.  
 90. *Journal of Management Studies*, 1996, 33(1), 1423-1437.  
 91. *Journal of Management Studies*, 1996, 33(1), 1439-1453.  
 92. *Journal of Management Studies*, 1996, 33(1), 1455-1469.  
 93. *Journal of Management Studies*, 1996, 33(1), 1471-1485.  
 94. *Journal of Management Studies*, 1996, 33(1), 1487-1501.  
 95. *Journal of Management Studies*, 1996, 33(1), 1503-1517.  
 96. *Journal of Management Studies*, 1996, 33(1), 1519-1533.  
 97. *Journal of Management Studies*, 1996, 33(1), 1535-1549.  
 98. *Journal of Management Studies*, 1996, 33(1), 1551-1565.  
 99. *Journal of Management Studies*, 1996, 33(1), 1567-1581.  
 100. *Journal of Management Studies*, 1996, 33(1), 1583-1597.  
 101. *Journal of Management Studies*, 1996, 33(1), 1599-1613.  
 102. *Journal of Management Studies*, 1996, 33(1), 1615-1629.  
 103. *Journal of Management Studies*, 1996, 33(1), 1631-1645.  
 104. *Journal of Management Studies</*



**US Army Corps  
of Engineers®**

REGULATORY DIVISION  
MISSISSIPPI BRANCH

0 285 570 Feet



### Legend

-  Non-Jurisdictional Emergent Wetland (0.13 Acres)
  Jurisdictional Intermittent Tributary (RPW) (599.9')
  Non-Jurisdictional Forested Wetland (1.48 Acres)
  Non-Jurisdictional Ephemeral Tributary (Non-RPW) (321')
  Property Boundary
  Non-Jurisdictional Upland Swale / Discrete Conveyance (131')
  Jurisdictional Perennial Tributary (RPW) (916')