

## APPENDIX B: FIGURES

Figure 1.1 Yazoo Backwater Area and five subareas.

Figure 1.2 Completed features of the Yazoo Basin, Yazoo Backwater, Mississippi, Project.

Figure 1.3 Drainage Area Boundary.

Figure 1.4 Yazoo Study Area.

Figure 1.5 Project Drainage Area.

Figure 1.6 Completed features of the Yazoo Basin, Yazoo Backwater, Mississippi, Project.

Figure 1.7 Upper and lower ponding areas from closure of the Little Sunflower and Steele Bayou water control structures respectively.

Figure 1.8 Three dimensional model of completed pump station and associated features.

Figure 1.9 Pump station (red), access road (orange), and utilities (green) right-of-ways.

Figure 1.10 Borrow area and access road right-of-ways.

Figure 1.11 Locations of the 34 supplemental low flow groundwater wells in relation to the Yazoo Study Area.

Figure 4.1 Total Population: Issaquena and Sharkey Counties.

Figure 4.2 Total Population: State of Mississippi.

Figure 4.3 Income: Per Capita.

Figure 4.4 Total Number of Households.

Figure 4.5 Labor Force.

Figure 4.6 Total Employment.

Figure 4.7 Unemployment Rate.

Figure 4.8 Employment: Non-farm Payroll.

Figure 4.9 Farm and Non-Farm Proprietor.

Figure 4.10 Market Value of Agricultural Goods Sold.

Figure 4.11 Lands in Farm Acreage.

Figure 4.12 Completed features within the Yazoo Study Area.

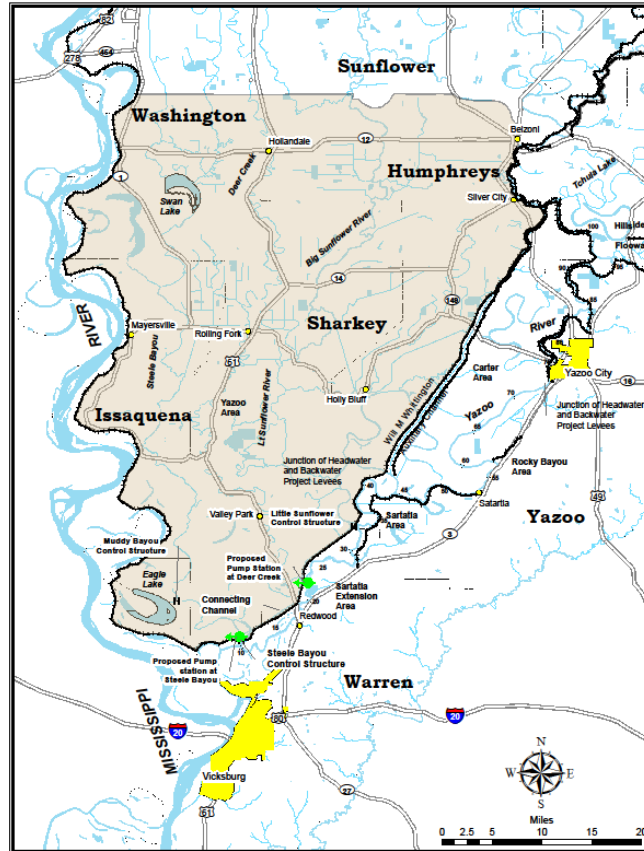


Figure 1.1 Yazoo Backwater Area and five subareas.



Figure 1.2 Completed features of the Yazoo Basin, Yazoo Backwater, Mississippi, Project.

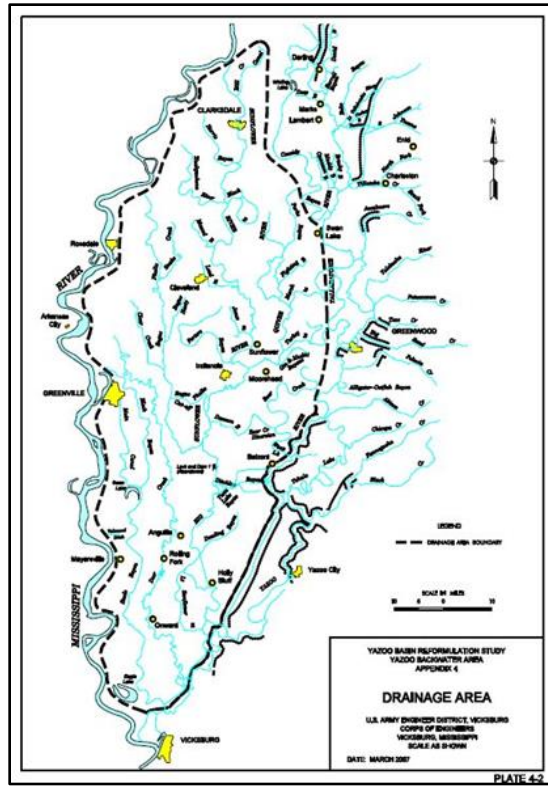


Figure 1.3 Drainage Area Boundary.

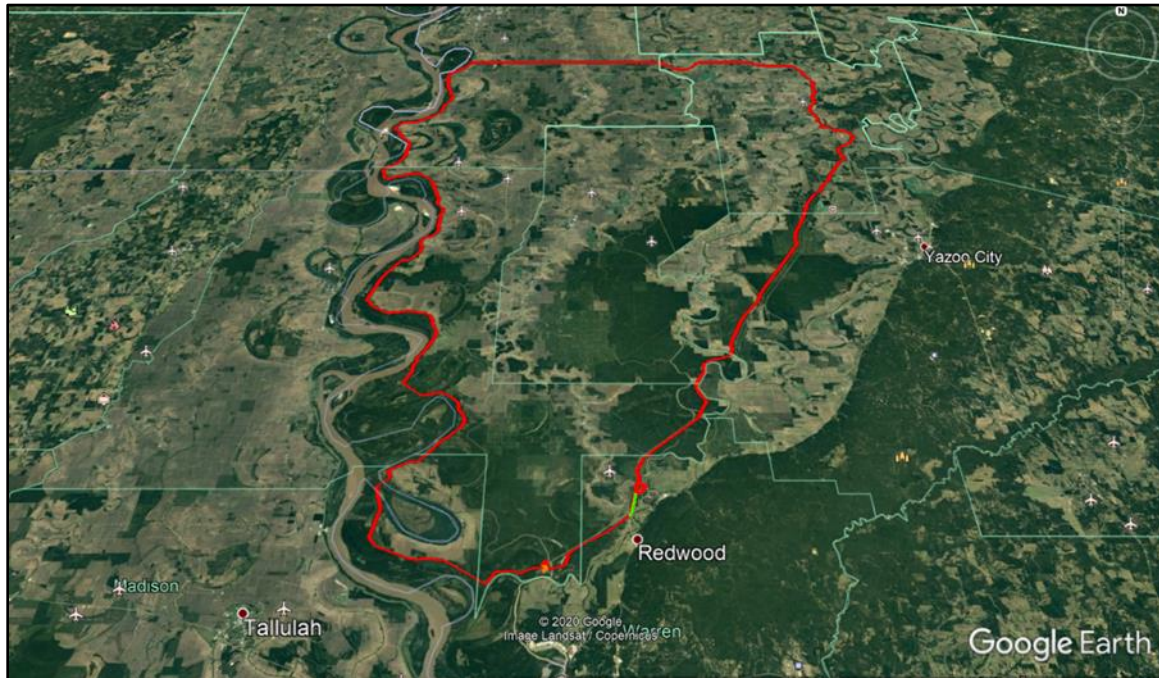


Figure 1.4 Yazoo Study Area.



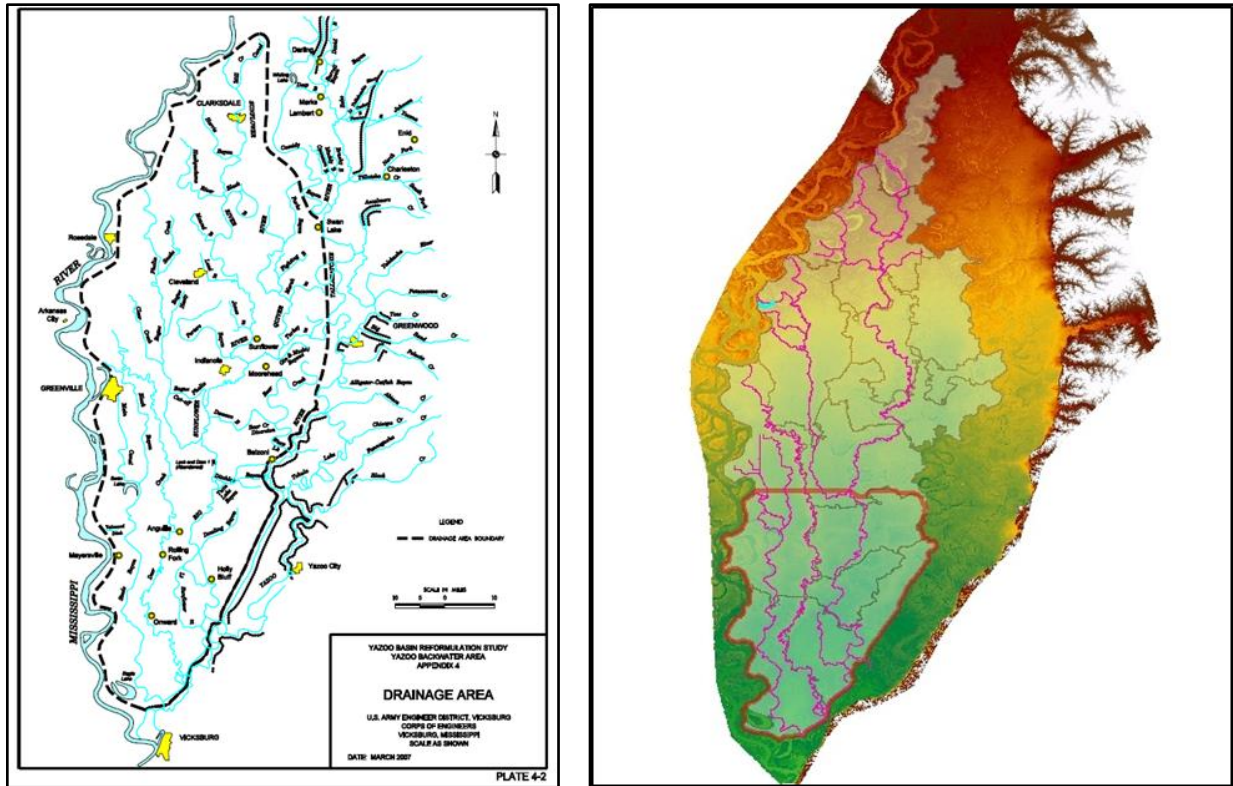


Figure 1.5 Project Drainage Area.

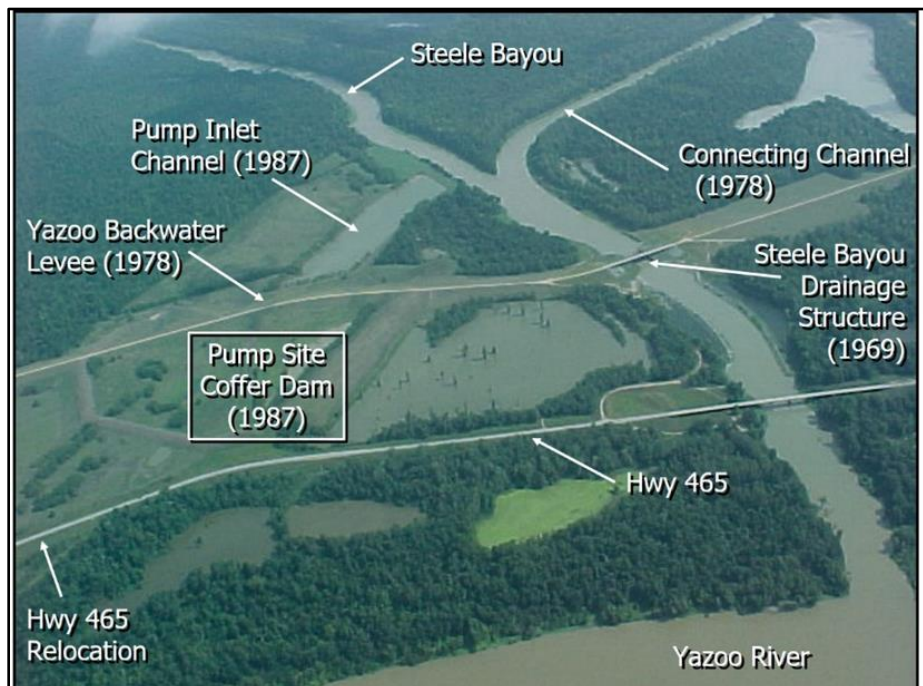


Figure 1.6 Completed features of the Yazoo Basin, Yazoo Backwater, Mississippi, Project.

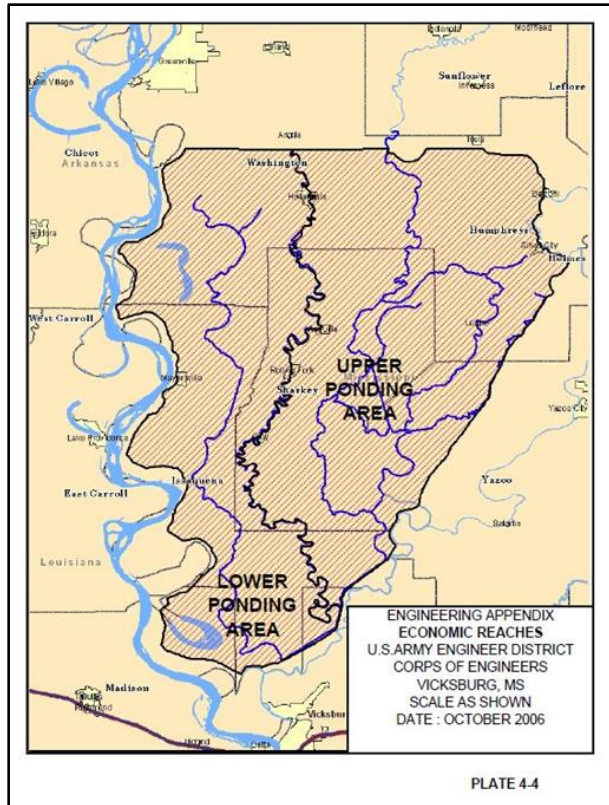


Figure 1.7 Upper and lower ponding areas from closure of the Little Sunflower and Steele Bayou water control structures respectively.

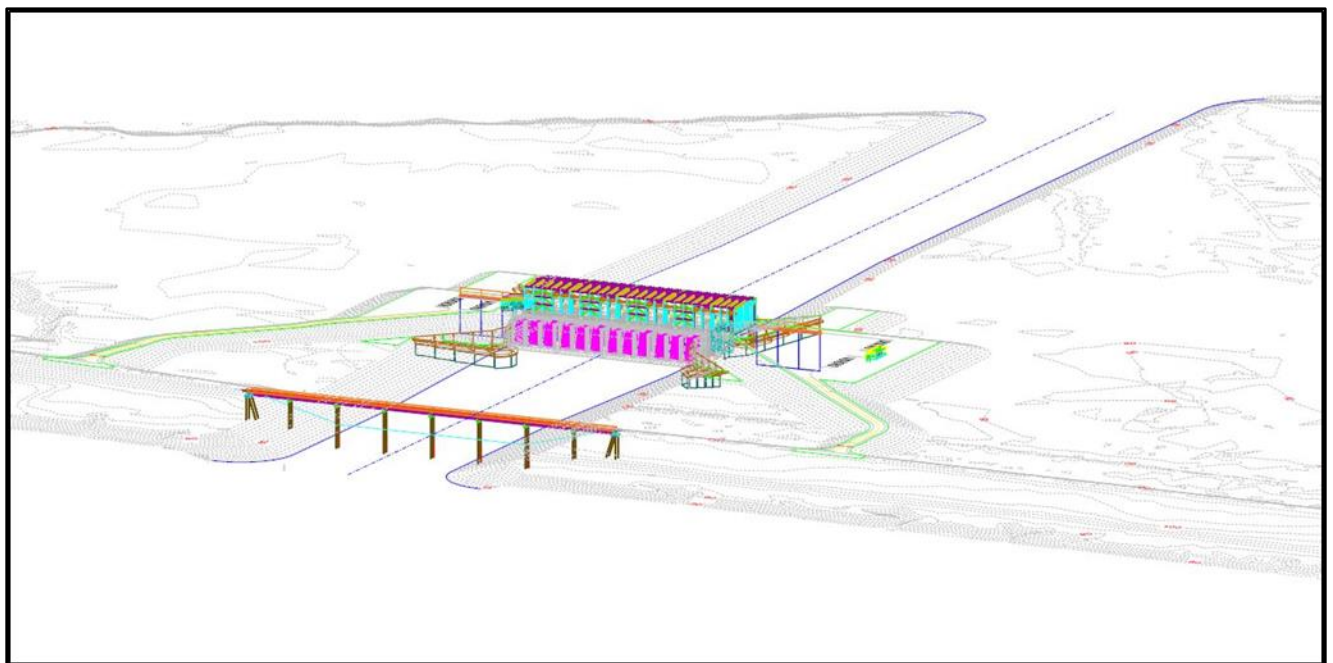


Figure 1.8 Three dimensional model of completed pump station and associated features.





Figure 1.9 Pump station (red), access road (orange), and utilities (green) right-of-ways.



Figure 1.10 Borrow area and access road right-of-ways.



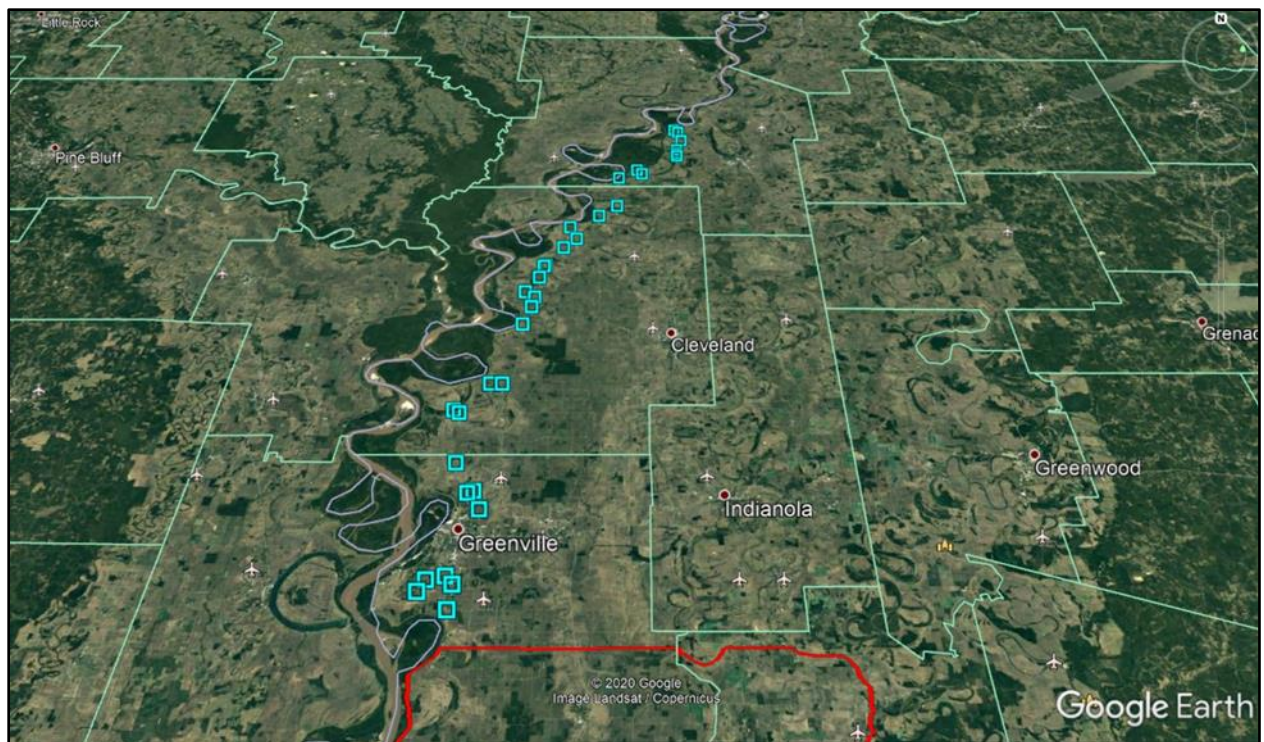


Figure 1.11 Locations of the 34 supplemental low flow groundwater wells in relation to the Yazoo Study Area.

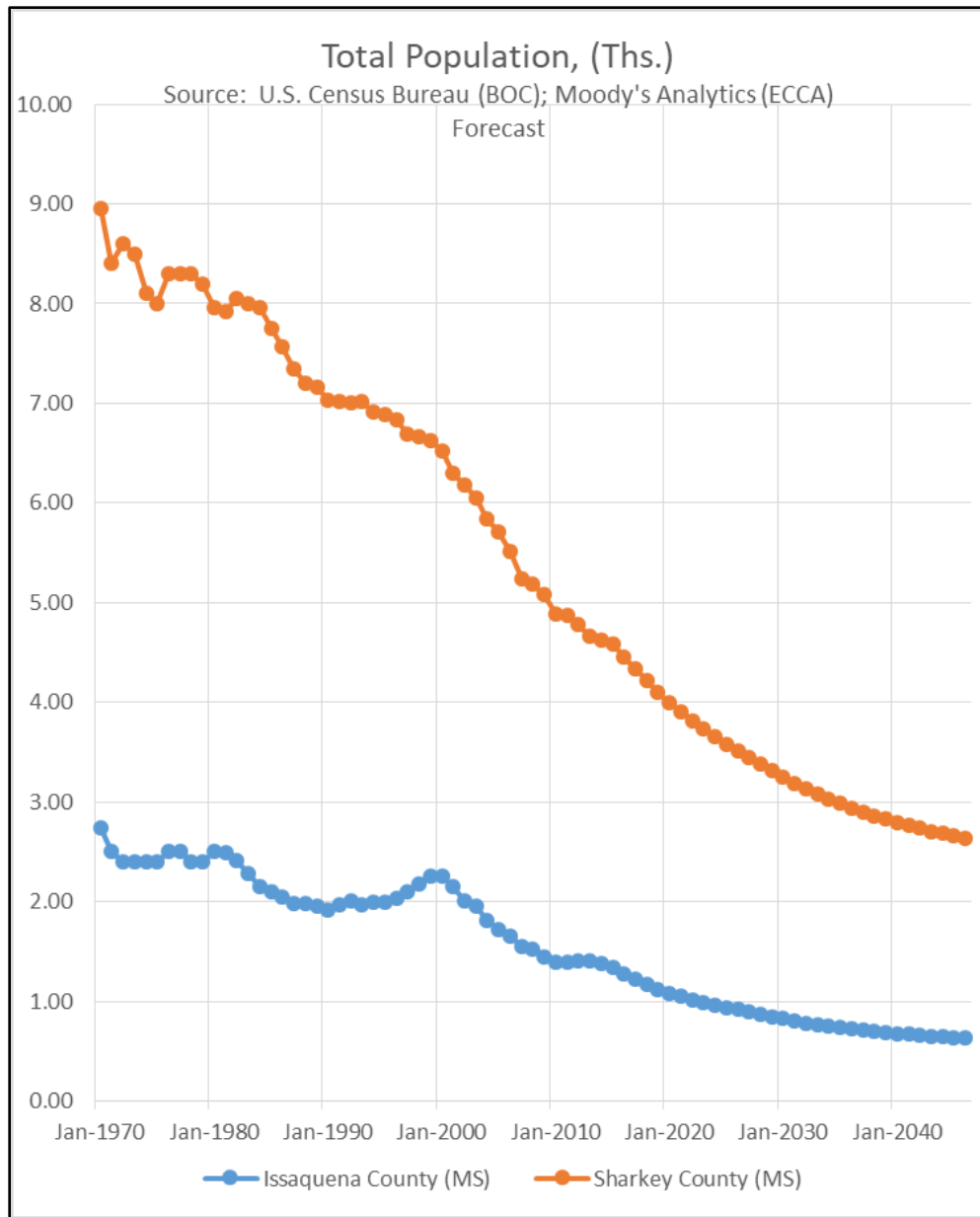


Figure 4.1 Total Population: Issaquena and Sharkey Counties.

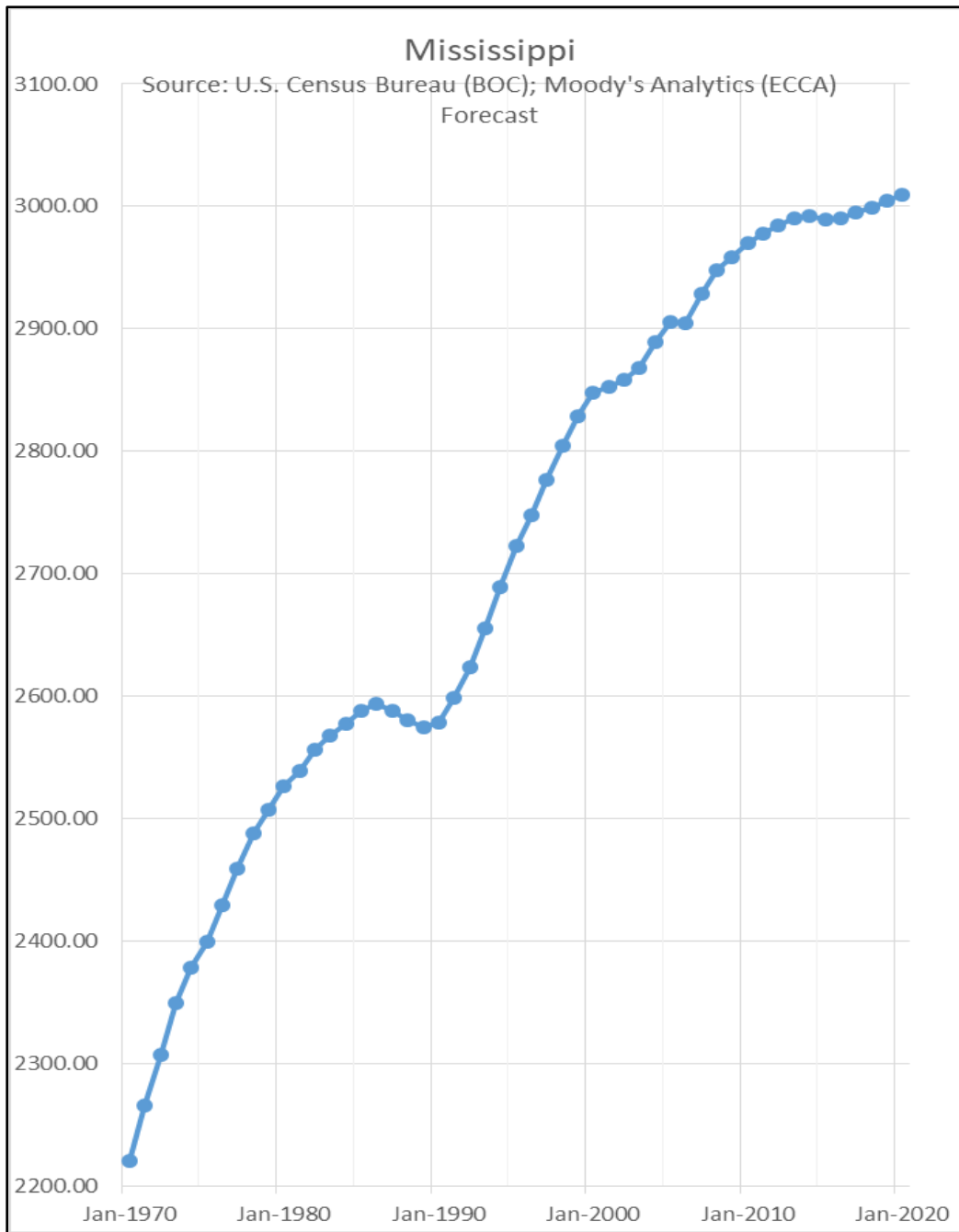


Figure 4.2 Total Population: State of Mississippi.



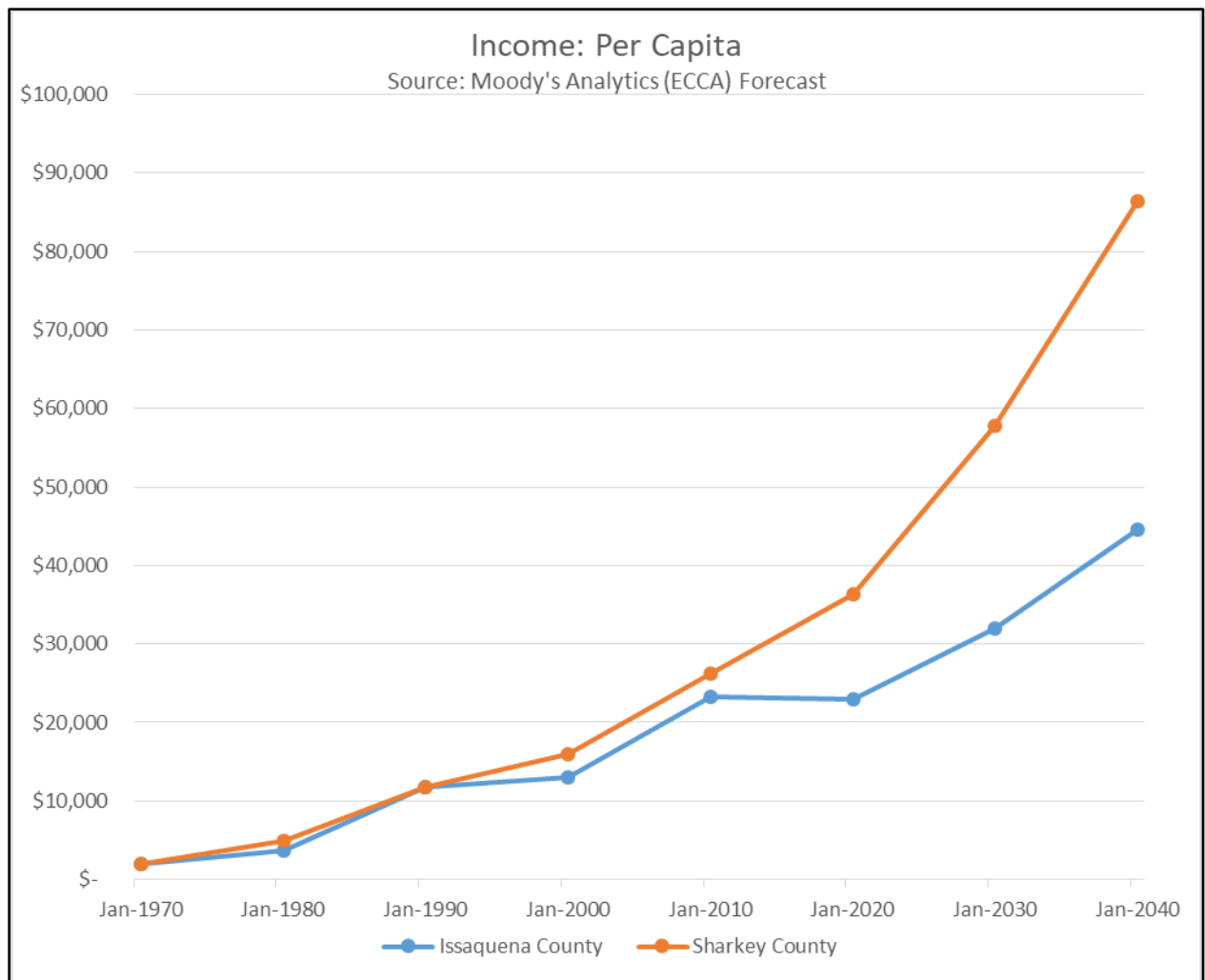


Figure 4.3 Income: Per Capita.

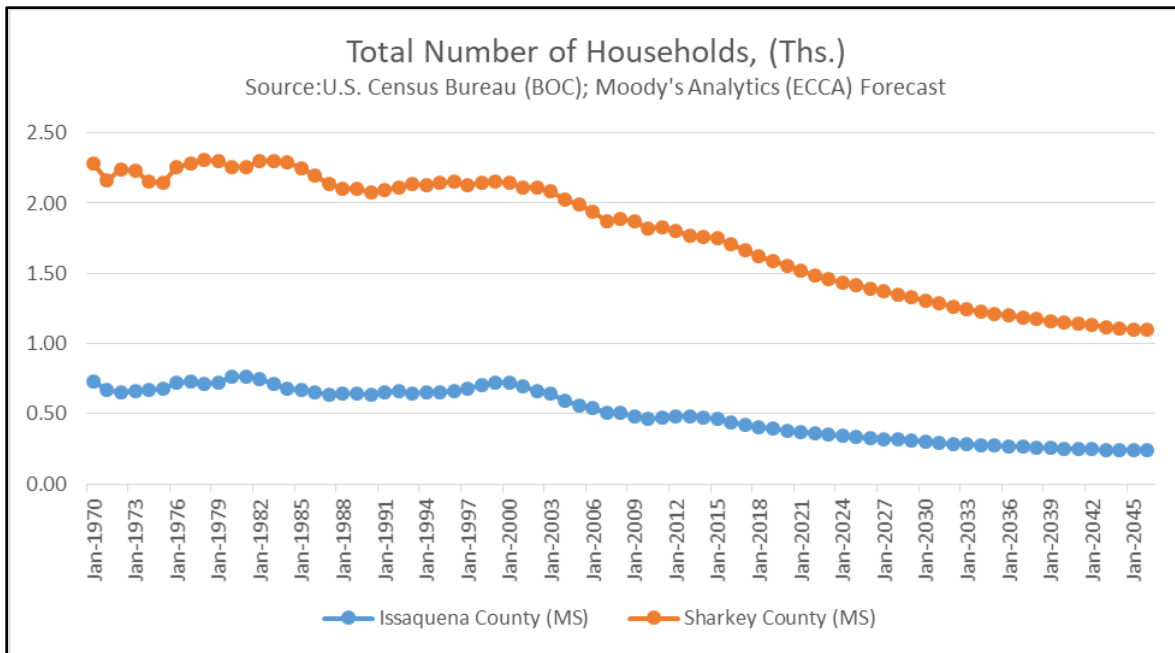


Figure 4.4 Total Number of Households.

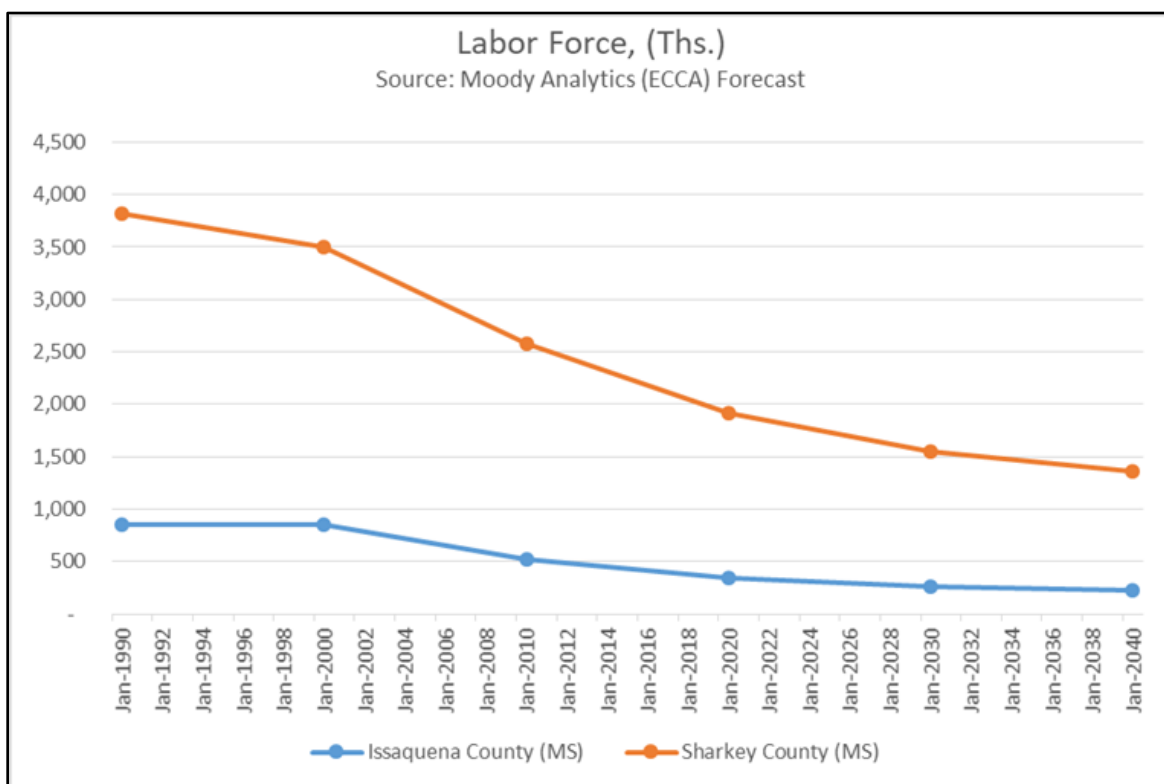


Figure 4.5 Labor Force.

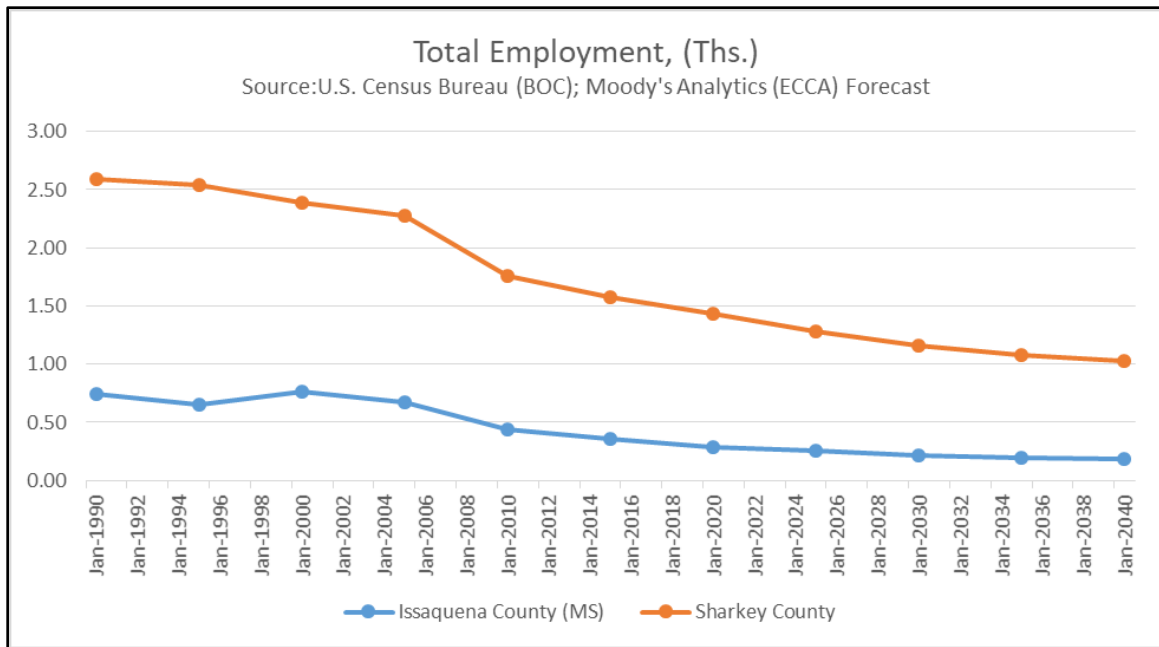


Figure 4.6 Total Employment.

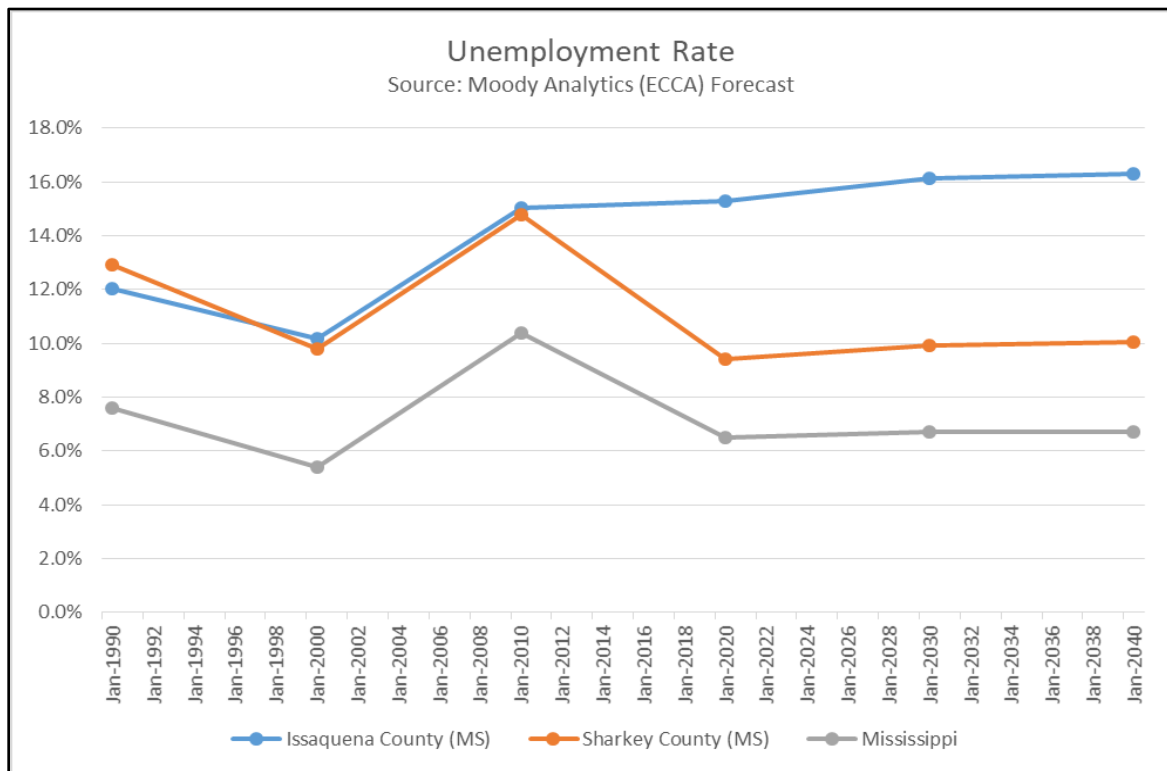


Figure 4.7 Unemployment Rate.



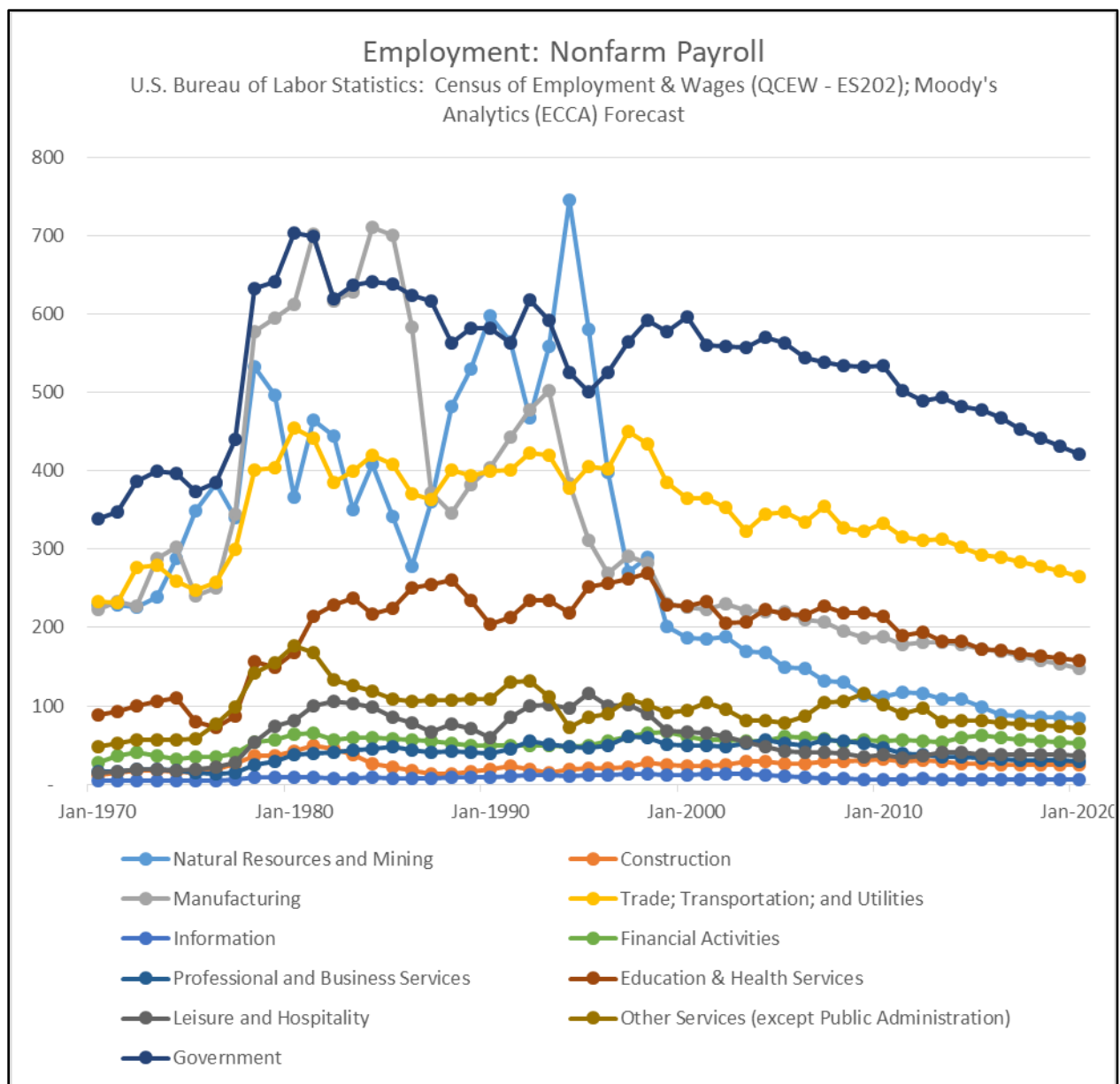


Figure 4.8 Employment: Non-farm Payroll.

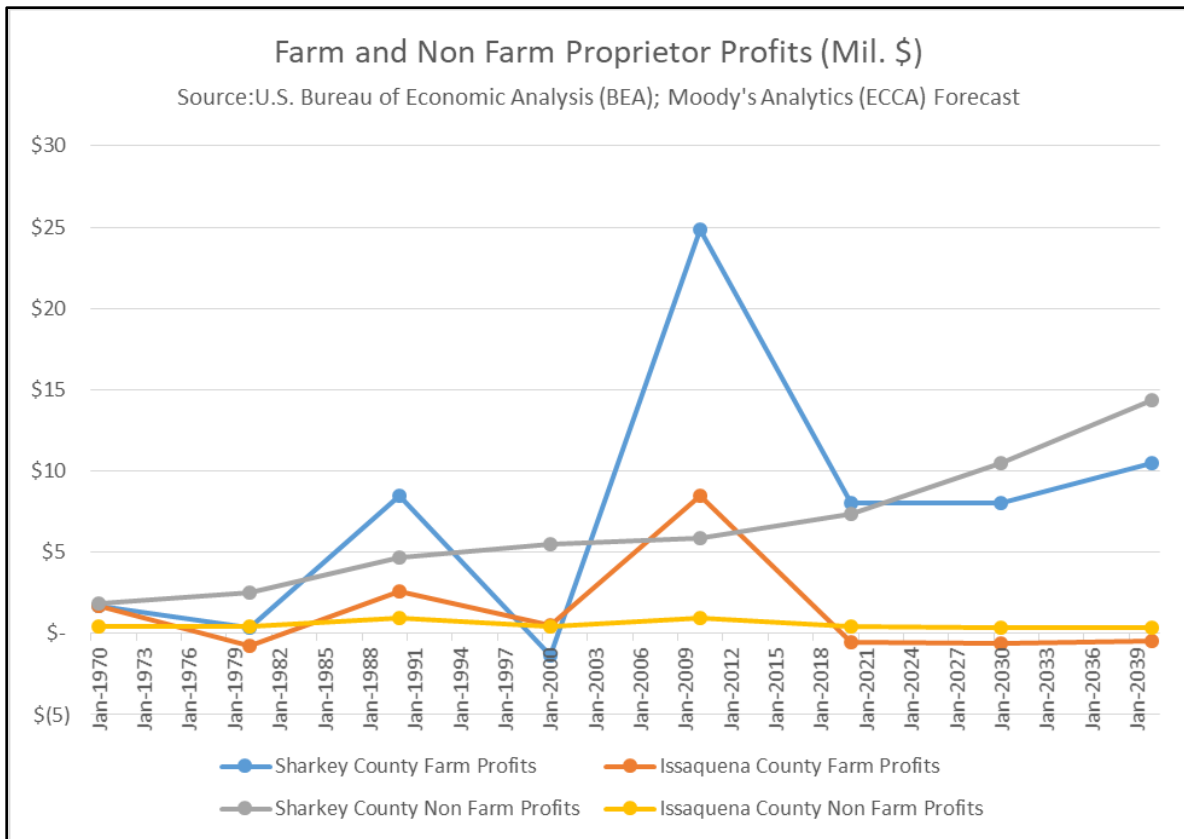


Figure 4.9 Farm and Non-Farm Proprietor.

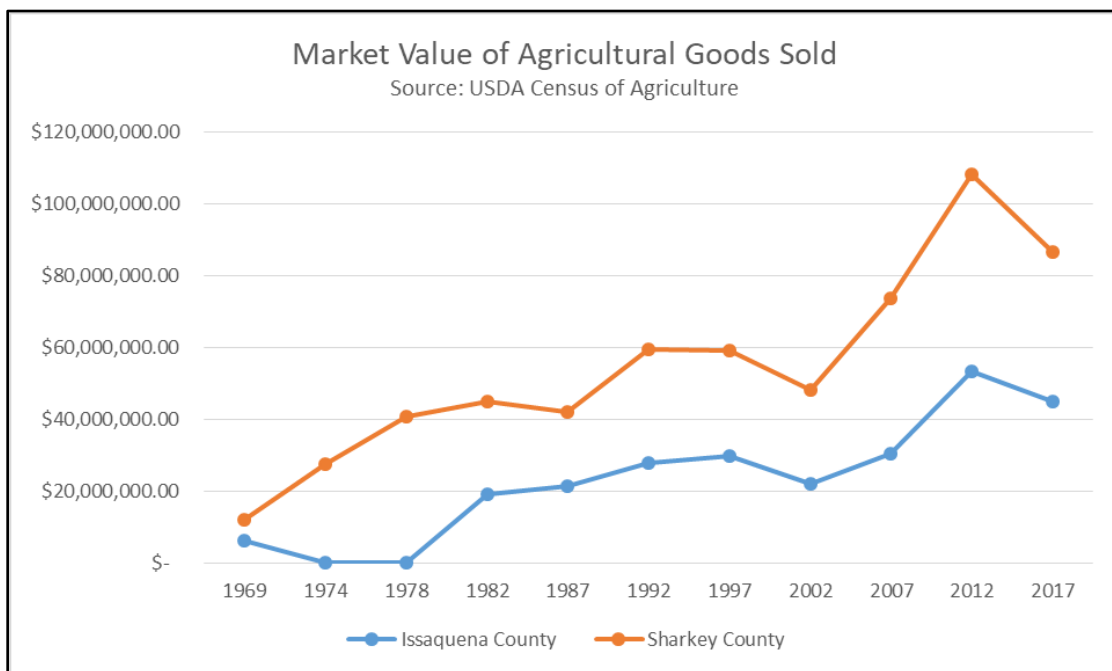


Figure 4.10 Market Value of Agricultural Goods Sold.

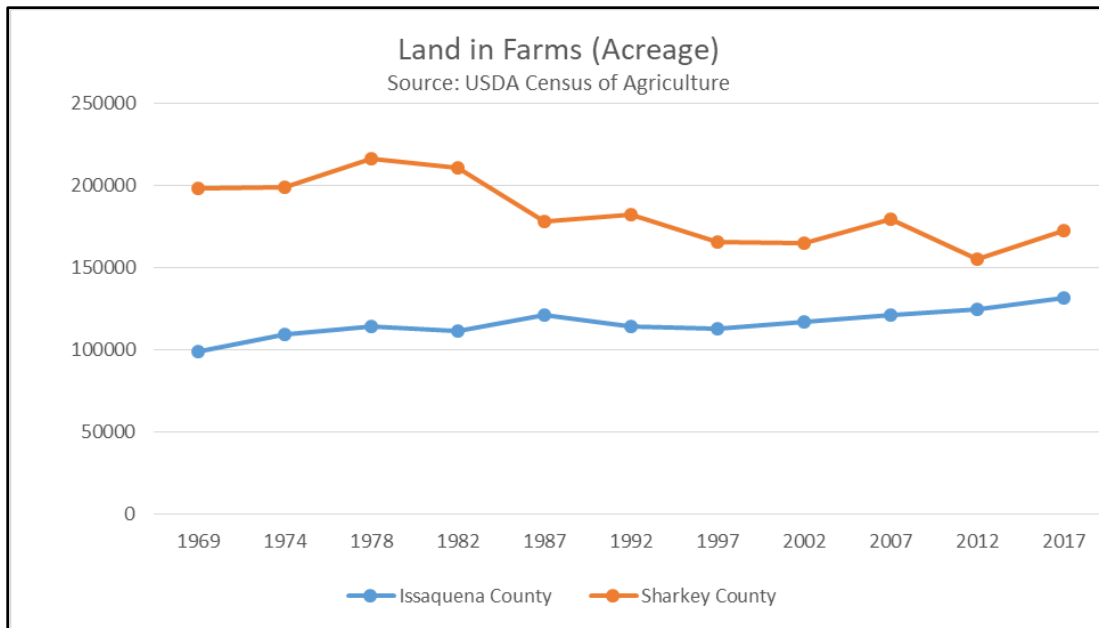


Figure 4.11 Lands in Farm Acreage.

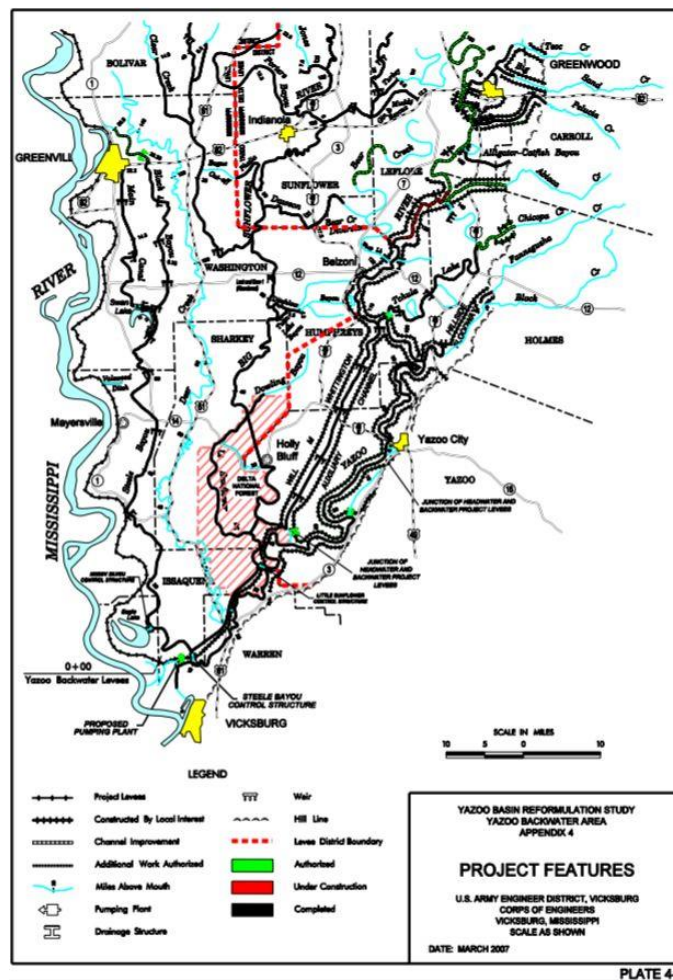


PLATE 4-3

Figure 4.12 Completed features within the Yazoo Study Area.