



PEARL RIVER BASIN, MISSISSIPPI FLOOD RISK MANAGEMENT PROJECT

PUBLIC MEETING
FOR
REVISED DRAFT ENVIRONMENTAL IMPACT
STATEMENT



U.S. ARMY



US Army Corps
of Engineers®





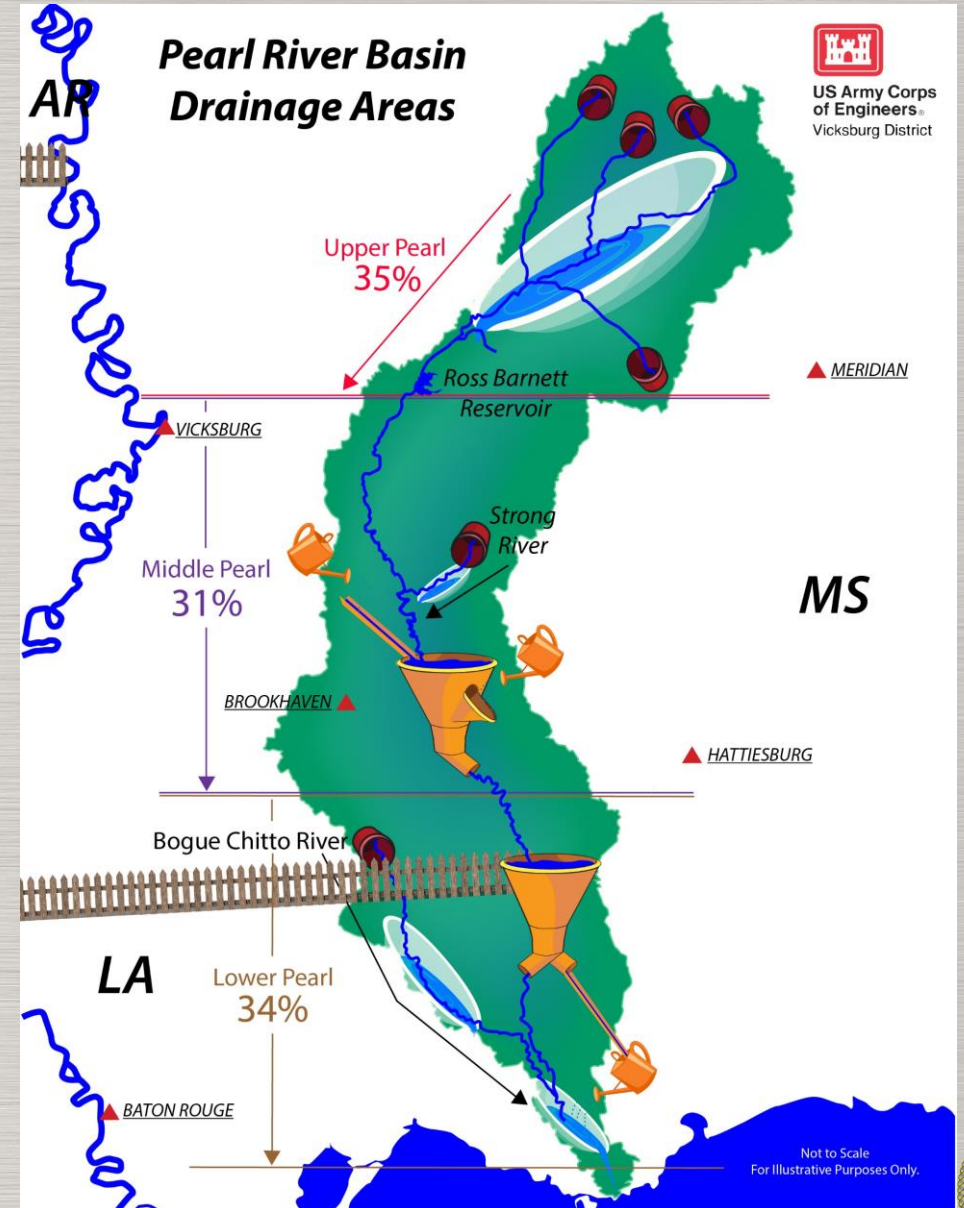
Message from Vicksburg District Commander



COL Jeremiah Gipson, PMP
Commander
U.S. Army Corps of Engineers Vicksburg District



US Army Corps
of Engineers®





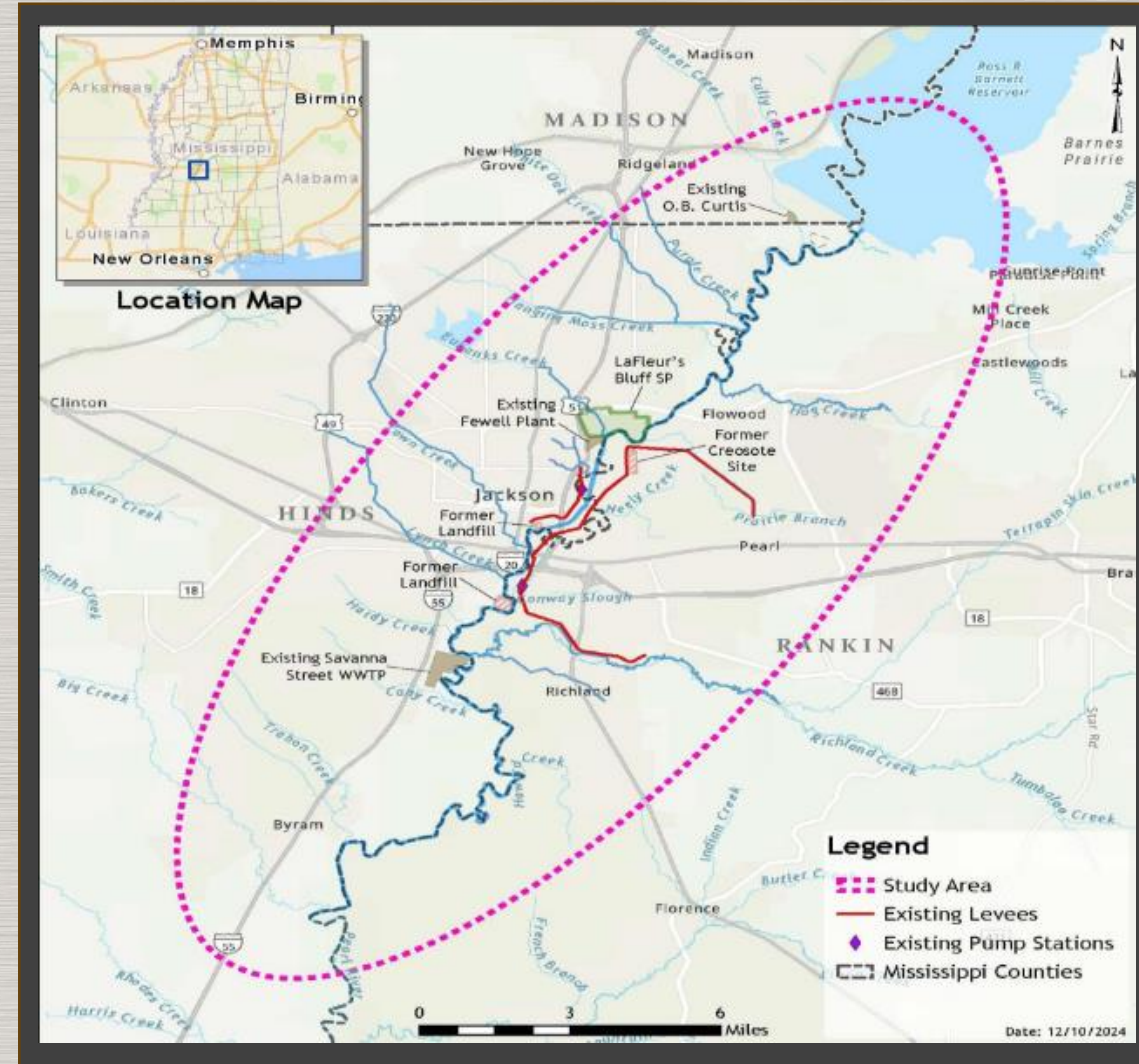
MEETING PURPOSE AND AGENDA

Why are we here?

Provide an update on the Pearl River Basin Flood Risk Management Project and receive public feedback during the 45-day comment period.

Agenda

- Rules of Engagement
- Public Meeting Schedule
- Project Details
- Proposed Alternatives
- Environmental Consequences
- Project Timeline
- Opportunities to Comment
- Opportunities for individual discussions



U.S. ARMY



US Army Corps
of Engineers®





RULES OF ENGAGEMENT

Virtual Participation

- All participants should remain on mute with cameras off.
- During the meeting submit comments/questions in the chat. Do not spam the chat.
- If you want to make a comment, please use the chat function within the meeting.
- Disrespectful or threatening language will not be tolerated.

In-Person Participation

- Wait to speak until given permission by the moderator.
- Limit speaking time to three minutes or less.
- Use respectful language.
- Avoid interrupting the panel, moderator, or fellow attendees.

Submit Comments

- Email pearlriverfrm@usace.army.mil
- Scan QR Code
- Mail: *U.S. Army Corps of Engineers
New Orleans District, CEMVN-PDS
7400 Leake Ave. New Orleans, LA 70118*



U.S. ARMY



US Army Corps
of Engineers®

Reminder - public comment period ends August 18, 2025





TABLE OF CONTENTS

RDEIS

- Executive Summary
- Section 1-Introduction
- Section 2- Affected Environment
- Section 3- Alternatives
- Section 4- Environmental Consequences
- Section 5- Habitat Mitigation
- Section 6- Implementation of Alternatives
- Section 7- Environmental Laws and Regulations
- Section 8- Public Involvement
- Section 9- Summary Discussion
- Section 10- Preparers
- Section 11- References and Resources
- Section 12- Acronyms and Abbreviations

Appendices

- Appendix A – Scoping Report
- Appendix B – Public Involvement Report
- Appendix C – Agency Coordination
- Appendix D – Endangered Species Act Coordination
- Appendix E – Hydrologic and Hydraulic Analysis
- Appendix F – Mitigation Requirements
- Appendix G – Cultural Resources Coordination
- Appendix H – HTRW
- Appendix I – Alternative Project Descriptions
- Appendix J – US Fish and Wildlife Service Coordination Act Report
- Appendix K – Environmental Laws Significance Table
- Appendix L – Environmental Compliance Laws
- Appendix M – NFI Report Appendix A. Plan Formulation
- Appendix N – Nonstructural Implementation Plan
- Appendix O – Clean Water Act
- Appendix P – Flood Risk and Other Social Effects: Community Impacts from Repeated Flooding and Flood Protection
- Appendix Q -DEIS June 2024
- Appendix R-Economic



U.S. ARMY



US Army Corps
of Engineers®





PUBLIC MEETING SCHEDULE

In-Person Meetings

Area: Monticello, MS

Date: Tuesday July 29, 2025 @6:00pm

Location: Lawrence County Civic Center, 125 E Broad Street, Monticello, MS 39654

Area: Slidell, LA

Date: Wednesday, July 30, 2025 @ 2:00 pm

Location: Slidell Municipal Auditorium, 2056 2nd Street, Slidell, LA 7058

Area: Jackson, MS

Date: Thursday July 31, 2025

Times and Locations:

2:00 pm @ St. Philips Episcopal Church, 5400 Old Canton Road, Jackson, MS 39211

6:00 pm @ Miss. Public Broadcasting Auditorium, 3825 Ridgewood Road, Jackson, MS 39211

Virtual Meetings

Date: Monday July 14, 2025 @2:00 p.m.

Format: Microsoft Teams



U.S. ARMY



US Army Corps
of Engineers®





PROJECT PURPOSE

Problem

- Headwater flooding of the Pearl River causes disruption to residents, businesses, and industry throughout Jackson, MS.
- Effects 5,000 commercial and residential structures, and a population of 500,000.

Purpose

- Evaluate flood risk management solutions for Jackson, MS.
- Evaluate the consequences & impacts of proposed actions within the study area.

Background

- Project conditionally authorized for construction pending assessment of flood damage reduction, environmental impacts, and economic analysis

Recent Changes

- Refinement of alternatives: A1, C, D, E to A1 with Canton Club Levee, D1, E1
- Economic Appendix
- Inclusion of additional FRM measures: 3 levees



U.S. ARMY



US Army Corps
of Engineers®





HISTORICAL PERSPECTIVE - PEARL RIVER FLOOD EVENTS



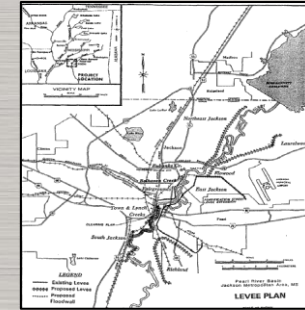
Flowood levee built
1935 -1940



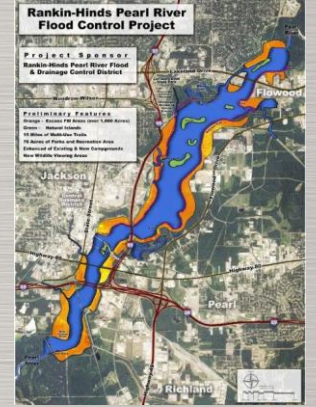
Federal Levee and
Channel Straightening
1963 - 1968



Highway 55 construction thru
Jackson, MS
1969 - 1971



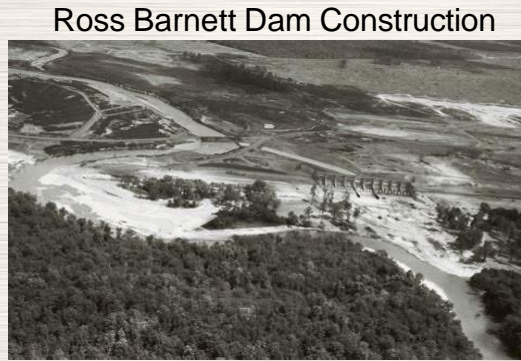
USACE Develops
Comprehensive Levee Plan;
Locally proposed LeFleur
Lakes Plan



Rankin-Hinds (R-H)
Feasibility Report
2018 - 2022



1879
Chief of Engineers
Report to Congress



Ross Barnett Dam Construction



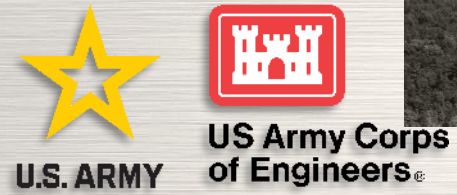
Flooding in Jackson from Pearl River
causing \$500-\$700 million in damages.

1983 - 1985
Levee Extension
And Channel Clearing

1986
Project Authority:
"Four Point Plan" for
the Pearl River Basin
constructing the
Shoccoe Dam and
Dry Reservoir north
of Ross Barnett.

2007
Project Authority:
Comprehensive
Levee or Locally
Preferred Plan

★ = Notable Flood Events



Refer to Section 2 and Section 4 for details on impacts of historical flooding in the area.





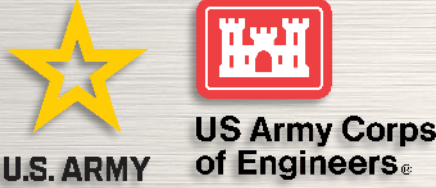
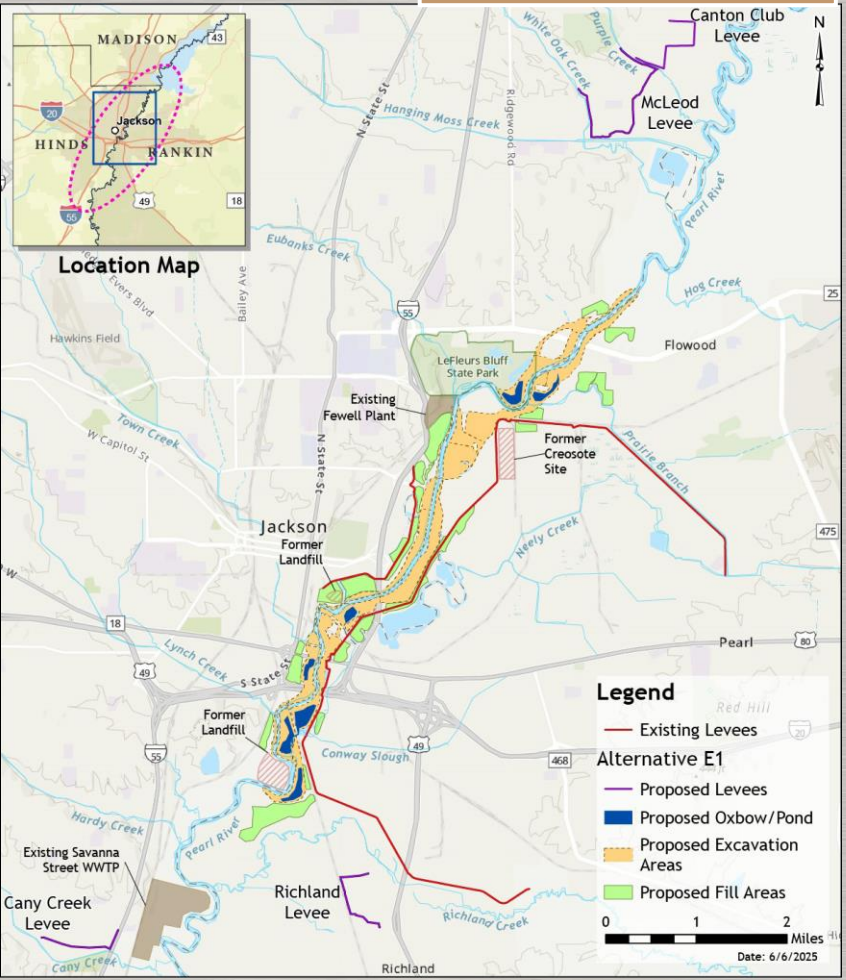
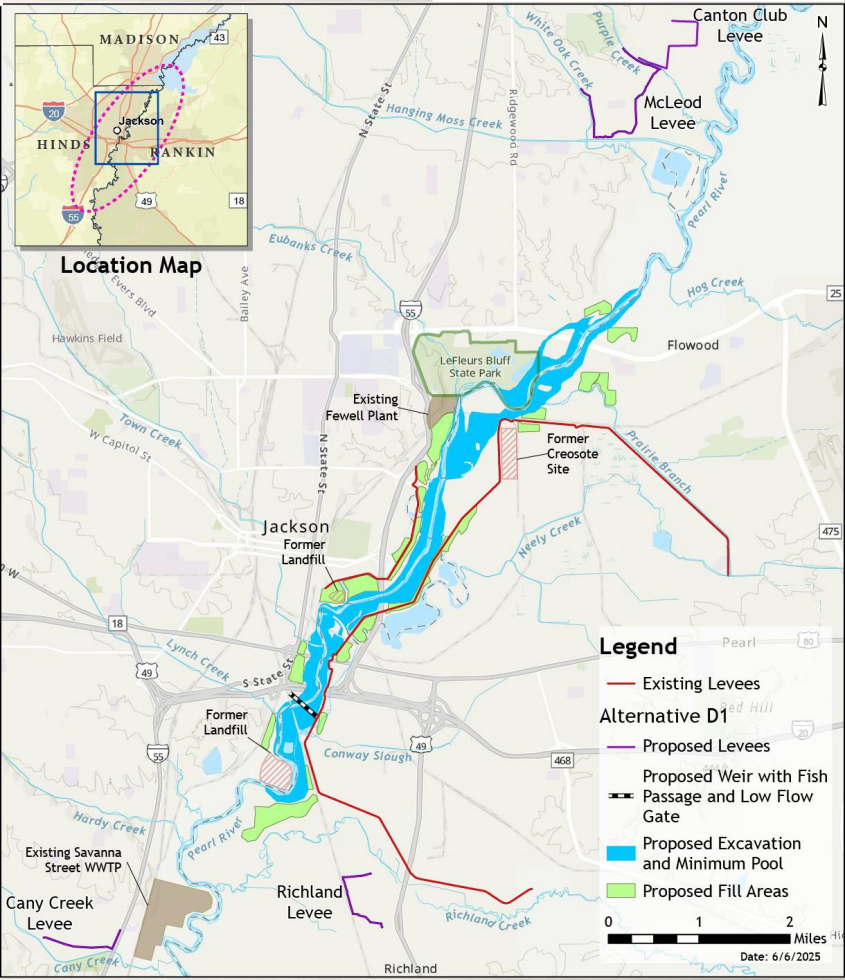
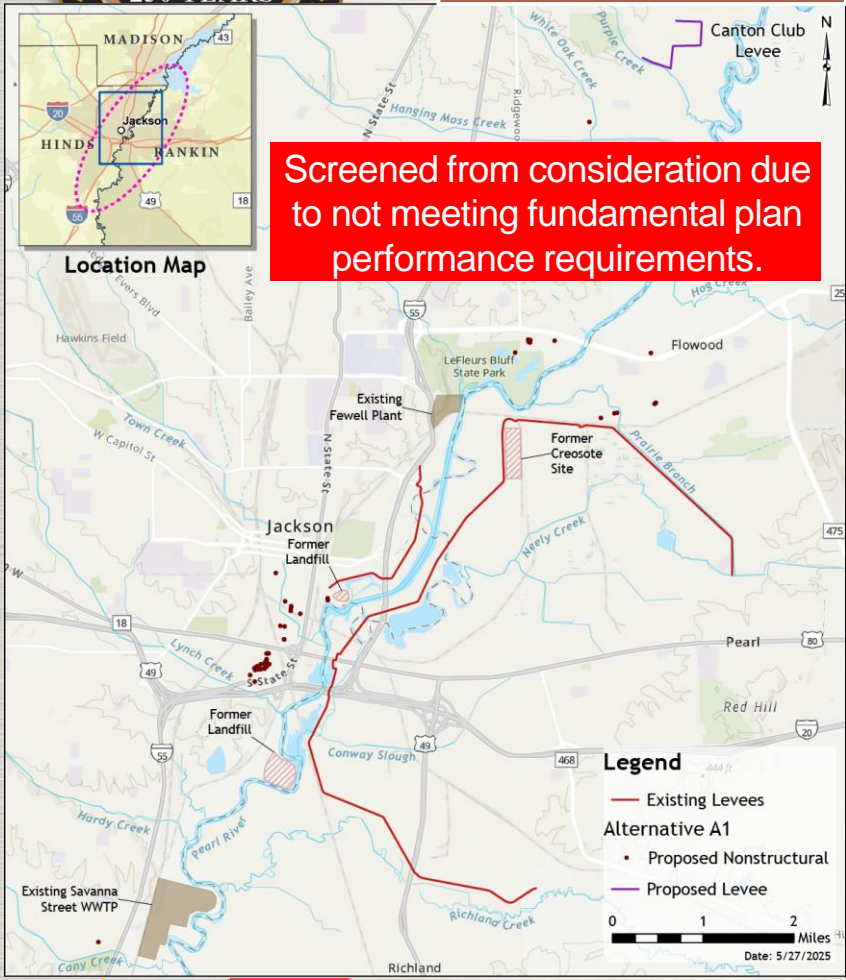
ALTERNATIVES CONSIDERED IN REVISED REPORT

Alternative A1

Screened from consideration due to not meeting fundamental plan performance requirements.

Alternative D1

Alternative E1



Refer to Section 3 of Report for details on current and previous alternatives considered.



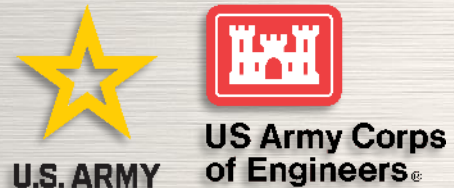
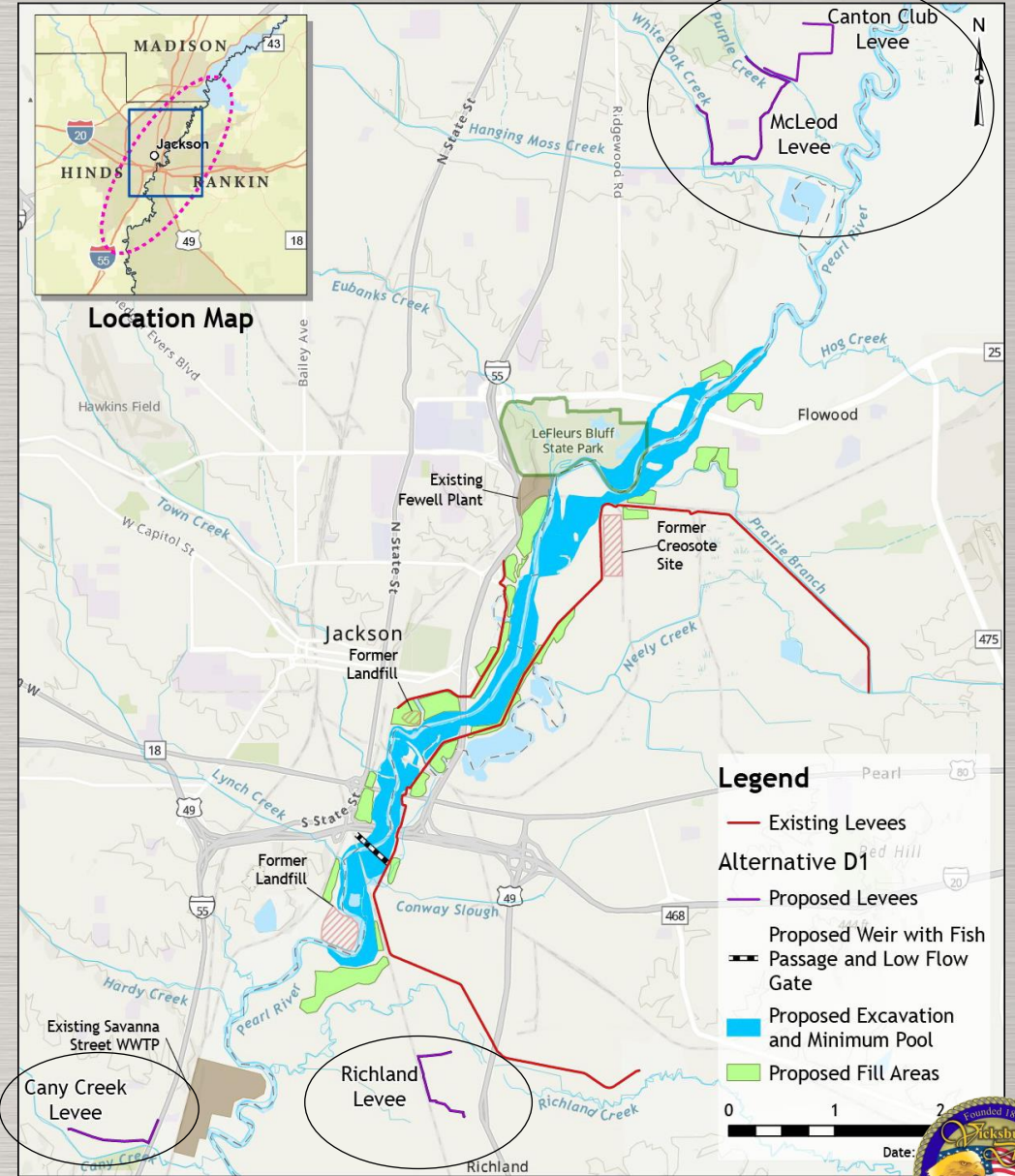


ALTERNATIVES UNDER CONSIDERATION

Alternative D1 – With Weir

Comprehensive Approach: Structural

- Deepening of the channel overbanks
- Addition of Federal levee : Canton Club Levee, McLeod Levee, Richland Levee, Cany Creek Levee
- Construction of new weir, Fish passage
- Non-Federal levee improvements (Savannah Street WWTP)
- Bridge modifications
- Mitigation features



Refer to Section 3 for analysis of impacts of proposed alternatives.





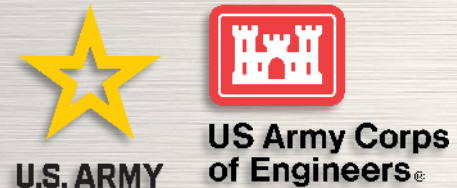
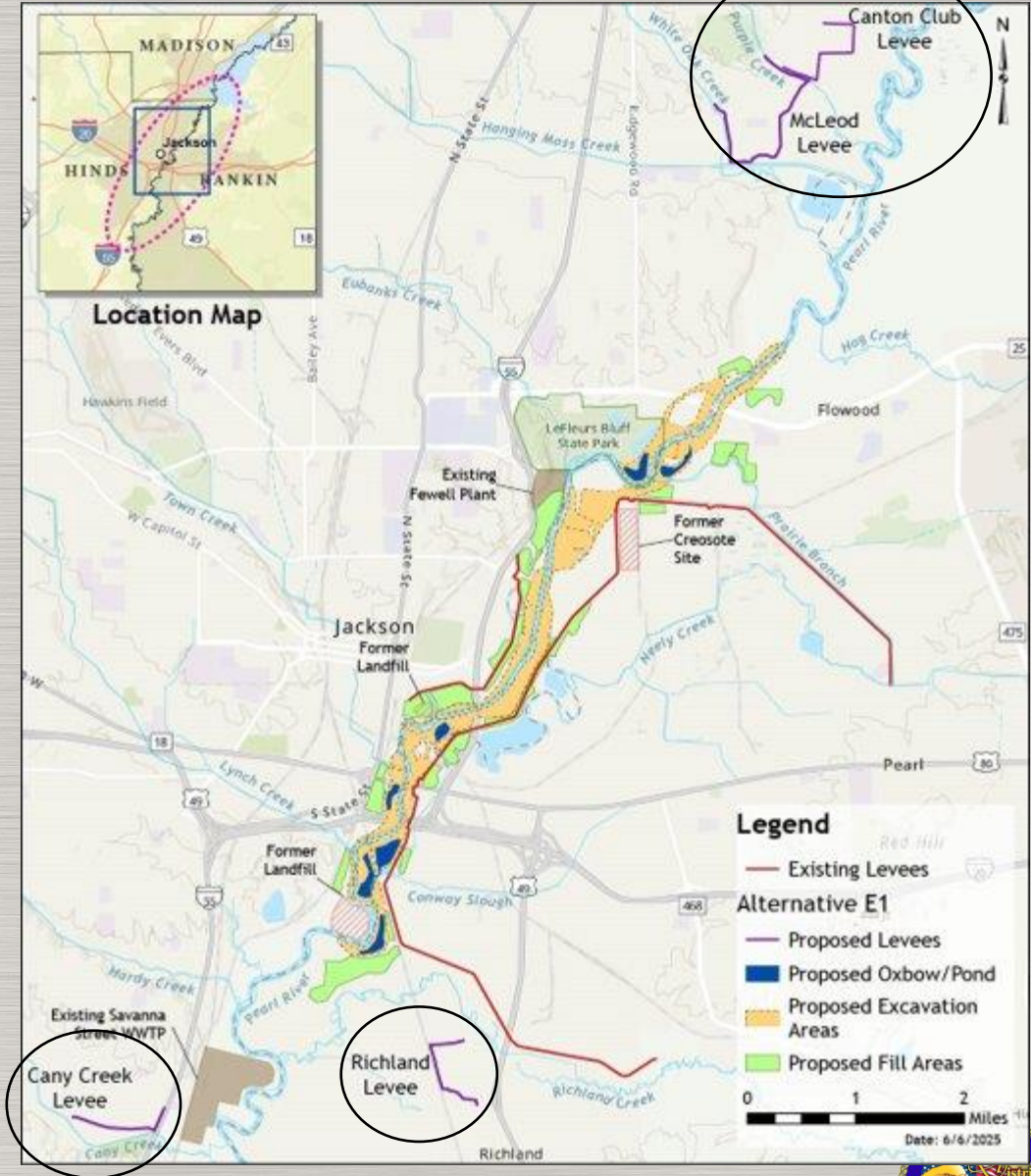
ALTERNATIVES UNDER CONSIDERATION

Alternative E1 – Without Weir

Comprehensive Approach: Structural

- Deepening of the channel overbanks
- Addition of Federal levee : Canton Club Levee, McLeod Levee, Richland Levee, Cany Creek Levee
- Non-Federal levee improvements (Savannah Street WWTP)
- Bridge modifications
- Mitigation features

Same as Alternative D1 but does not include the construction of the weir and fish passage.



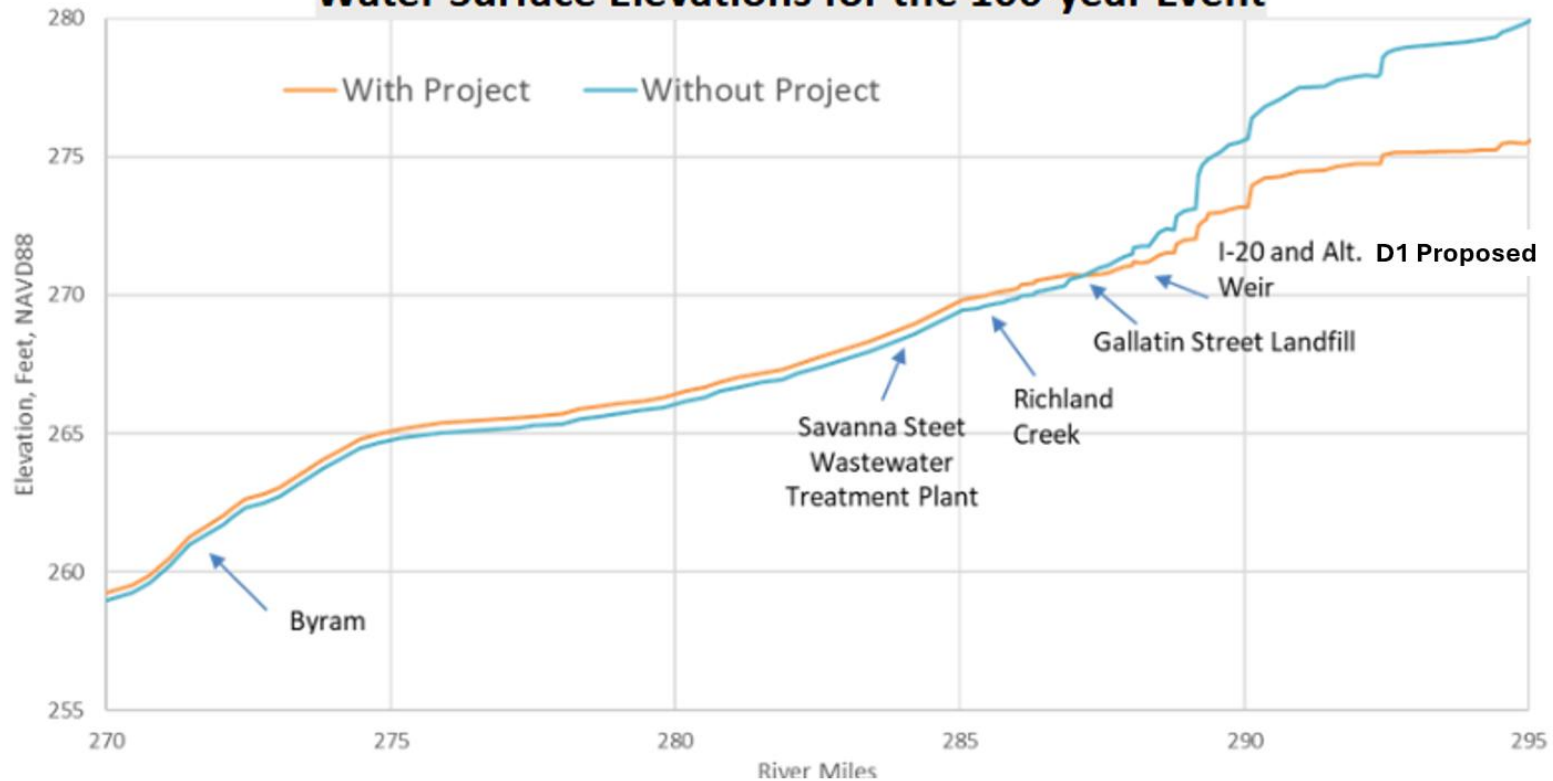
Refer to Section 3 for analysis of impacts of proposed alternatives.





HYDRAULIC ANALYSIS OF PROPOSED ACTIONS

Water Surface Elevations for the 100-year Event



DOWNSTREAM IMPACTS OF PROPOSED ACTIONS

- Raises water surface elevations by ~3” for the 100-year event.
- Water surface elevation changes become negligible 5-miles north of Monticello, MS



US Army Corps
of Engineers®

Refer to sections 2, 4, and 7 and appendix E for additional information on Hydraulic Analysis.





ECONOMICS

Alternative D1 – With Weir

Alt D1 has a project first cost ranging from \$873 million to \$918 million. This plan reduces damages of \$19.7 million in annually. It yields annualized net benefits from (\$11) million to (\$12.8) million and has a benefit to cost ratio of 0.7.

Alternative E1 – Without Weir

Alt E1 has a project first cost ranging from \$708 million to \$753 million. This plan reduces damages of \$19.8 million in annually. It yields annualized net benefits from (\$3.8) million to (\$5.6) million and has a benefit to cost ratio ranging from 0.8 to 0.9.



U.S. ARMY



US Army Corps
of Engineers®

Refer to sections 2, 4, and 7 and appendix R for additional information on Economics.



STATUS OF ENVIRONMENTAL COMPLIANCE

Threatened and Endangered Species

- Biological assessment submitted to USFWS in Feb-2024.
- USFWS Biological Opinion was provided in Nov-2024.
- Reasonable and prudent measures were developed for federally listed species.



Habitat Mitigation

- Preliminary mitigation plan developed
- Project specific mitigation plan will be developed in subsequent phase(s)
- Identified lands for forested wetlands and uplands mitigation.
- Lacustrine mitigation would be implemented within the project footprint for Alt E1.
- Riverine mitigation measures are still being developed.
- In subsequent phase(s), will refine modeling for the direct and indirect impacts and mitigation needs.



Hazardous, Toxic, and Radioactive Waste (HTRW)

- Multiple Environmental Site Assessment (ESA) analysis conducted.
- Additional analysis will be conducted prior to construction.

Refer to sections 2, 4, 5, & 7 and appendices D - F and H for additional information on environmental compliance.



US Army Corps
of Engineers®





STATUS OF ENVIRONMENTAL COMPLIANCE

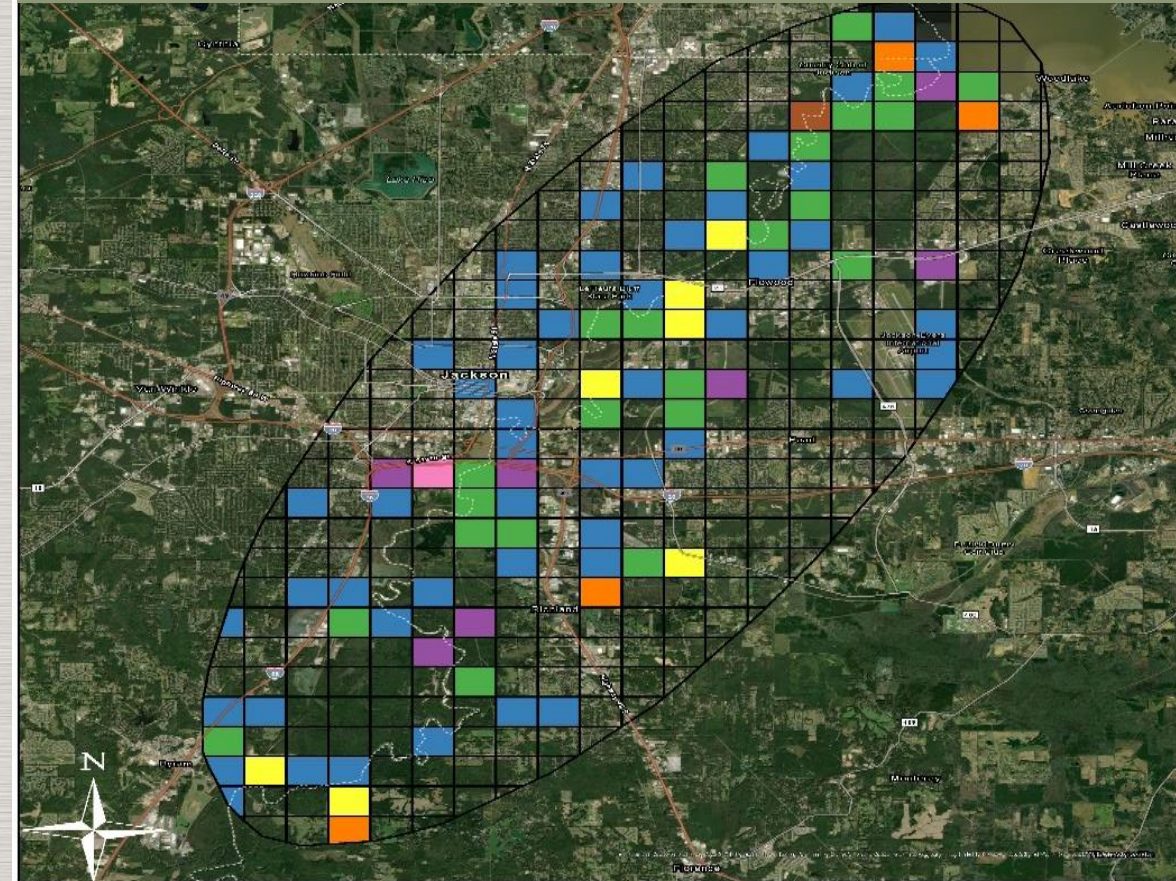
Cultural Resource Impacts

- All Alternatives (D1 and E1) have the potential to cause reasonably foreseeable adverse effects to historic properties, including National Register listed or eligible buildings, districts, sites, or structures.

Section 106 NHPA Programmatic Agreement (PA)

- Undertaking is complex; may adversely affect significant historic properties; and extent of effects is not fully known.
- Negotiating a PA with the SHPO, Federally-Recognized Tribal Governments, and other stakeholders to avoid, minimize, and/or mitigate adverse effects.
- PA will be executed before a Record Of Decision is signed, ideally before the final EIS is complete.

Cultural Resources in the Study Area range from none (no color) to 8 (pink) per kilometer.



MDAH
MISSISSIPPI DEPARTMENT OF
ARCHIVES & HISTORY



Map by Kent Asand 7/10/2024



**US Army Corps
of Engineers®**

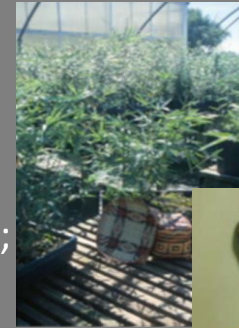
Refer to sections 2, 4, and 7 and appendix G for additional information on environmental compliance.



STATUS OF ENVIRONMENTAL COMPLIANCE

Tribal Resources

- Coordination and consultation with Federally-Recognized Tribes is ongoing.
- No Tribal Lands or Rights have been identified within the Study Area.
- Consulting Tribes have identified Protected Tribal Resources to include:
 - 1) Cultural Keystone Species, which can be a plant, animal, or other natural resource that has greatly shaped the cultural identity of a group of people;
 - 2) A wide variety of places and landscapes: archaeological sites, cemeteries, trails and pathways, campsites and villages, fisheries, hunting grounds, plant gathering areas, holy lands, landmarks, important places in Native American history and culture, and places of persistence and resistance.



Water Quality

- A section 404 (b) (1) evaluation will be conducted after further data is provided.
- A section 401 pre-filing meeting request was submitted to MDEQ on July 11, 2023, and was reissued on April 26, 2024, & April 10, 2025 due to the inclusion of additional features within the Alternatives.

Recreation

- USACE and the non-federal interest may cost share incidental recreation features on public, project lands if the recreation activities have a strong, direct relationship to the proposed FRM measures (ER 1105-2-103).
- Alternatives D1 and E1 both create and support opportunities for RV and tent camping, fishing piers, boat ramps and parking, trails, and wildlife viewing areas



US Army Corps
of Engineers®

Refer to sections 2, 4, and 7 and appendix G for additional information on environmental compliance.





SUBMIT YOUR COMMENTS

Comments accepted through August 18, 2025

Mail Comment Card to:

Mr. Jason Emery; Acting Chief, Environmental Branch
U.S. Army Corps of Engineers
CEMVN-PDS
7400 Leake Ave
New Orleans, Louisiana 70118

SCAN TO LEARN MORE



U.S. ARMY



US Army Corps
of Engineers®

District Website: <https://www.mvk.usace.army.mil>

