



**US Army Corps  
of Engineers**

Vicksburg District  
4155 Clay Street  
Vicksburg, MS 39183-3435  
www.mvk.usace.army.mil



# Public Notice

<b>APPLICATION NO.:</b>	<b>RHW-MVK-2014-569</b>
<b>EVALUATOR:</b>	<b>Ms. Ramona Warren</b>
<b>PHONE NO.:</b>	<b>(601) 631-5441</b>
<b>FAX NO.:</b>	<b>(601) 631-5459</b>
<b>E-MAIL:</b>	<b>Ramona.H.Warren@usace.army.mil</b>
<b>DATE:</b>	<b>August 19,2014</b>
<b>EXPIRATION DATE:</b>	<b>September 19,2014</b>

Interested parties are hereby notified that the U.S. Army Corps of Engineers, Vicksburg District, is considering a proposal to establish the Bashaway Creek Mitigation Bank (BCMB). A prospectus has been received describing the proposed bank from Providence Engineering and Environmental Group, LLC, on behalf of Loneoak Capital Management, LLC, the bank Sponsor. The proposed site is located in sections 23, 24, 25, 26, 35 and 36, T17N-R8W, and sections 19 and 30, T17N-R7W, Bienville Parish, Louisiana. (enclosure).

**Description:** The BCMB is being proposed by the bank sponsor as a means to meet the requirements for compensatory mitigation for future and as yet unknown wetland and stream losses which may be permitted by the Corps under the authority of Section 404 of the Clean Water Act.

The proposed bank site is 13.58 miles southeast of Minden, Louisiana. Access to the site is by way of an unnamed road approximately 0.75 west of the junction of LA Highway 516 and LA Highway 154. The site is characterized by managed pine, bottomland hardwood forest, herbaceous wetland, and upland habitats. BCMB is bordered on the west, northeast and southeast by upland and forested tracts. The floodplain of Black Lake Bayou forms a continuous corridor from north to south through the bank site.

**Baseline Conditions / Current Land Use / Proposed Actions:**

The property contains approximately 810.19 acres of bottomland hardwood wetlands, 188.28 acres of bedded pine-dominant wetlands, 134.18 acres of non-bedded pine-dominant wetlands, 14.98 acres of herbaceous wetlands, and 193.25 acres of uplands. The other waters of the U.S. on site consist of total



**121,475 linear feet (LF) of existing streams, which includes 15,086.1 LF of Black Bayou; 7,755.96 LF of Bashaway Creek; 17,409.66 LF of Brush Creek; 5,157.28 LF of Poland Branch; and 76,065.66 LF of unnamed tributaries**

**The BCMB was historically managed timber production. The current landowner continues to manage and utilize the property for timber production and recreational hunting.**

**Vegetation can be characterized as predominantly Red maple, Bush bluestem, Alabama supplejack, Crossvine, White-edge sedge, American hornbeam, Common buttonbush, Lon-leaf wood-oats, Common spike-rush, Broom rosette grass, American beech, Eastern swamp privet, Deciduous holly, American holly, Yaupon, Lamp rush, Sweet-gum, Wing-angle loosestrife, Sweet-bay, Black tupelo, Over cup, Swamp chestnut oak, Water oak, Cherry-bark oak, Willow oak, Texas red oak, Sawtooth blackberry, Black willow, Fringed greenbrier, Round leaf greenbrier, Bald cypress, Eastern Poison ivy, American elm, and Elliott's blueberry.**

**The Natural Resources Conservation Service has mapped the soils in the area as Bowie, Boykin loamy fine sand, Cahaba fine sandy loam, Gurdon silt loam, which are non hydric soils. Guyton Ouachita silt loams are frequently flooded soils, and listed as predominantly hydric soils on the local list (NRCS Web Soil Survey 2014), and the national list (NRCS 2012 National Hydric Soils list by state) in Bienville Parish.**

**The BCMB is in the Black Lake Bayou watershed; within the United State Geological Survey (USGS) Hydrologic cataloging unit (HUC) 11140209. The Black Lake Bayou is designated as a Louisiana Natural and Scenic River system. Approximately, 15,086.16 linear feet of Black Lake Bayou traverses the BCMB from north to south. The primary source of hydrology currently present on the site is back-water flooding of Black Lake Bayou and its tributaries.**

**The Bank restoration plan includes wetland restoration activities focusing on restoring native plant communities, preservation within the bottomland hardwood and stream buffer areas, and returning the normal hydroperiod within the manage pine area.**

**The Sponsor proposes to restore 246.38 acres of bottomland hardwood forest (BLHF), preserve 468.75 acres of BLHF, restore 91.06 acres of bottomland hardwood stream buffers, and preserve 341.44 acres of bottomland hardwood stream buffers. The Sponsor is proposing to restore and maintain 100-foot-wide riparian buffer from each bank of all streams within the BCMB.**

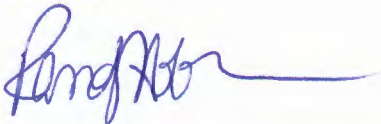
**Service Area:** This Mitigation Bank will be established to provide mitigation to compensate for impacts to waters of the United States, including wetlands, within the Corps of Engineers Vicksburg District. This area is demarcated by the United States Geologic Survey as hydrologic unit codes 11140209 and 1140203. Decisions authorizing the use of credits from the Mitigation Bank will be made by the appropriate authority on a case by case basis in accordance with all applicable requirements.

The prospectus, which outlines the conceptual plan for the bank, is available for review at the Vicksburg District, Corps of Engineers at the address given below.

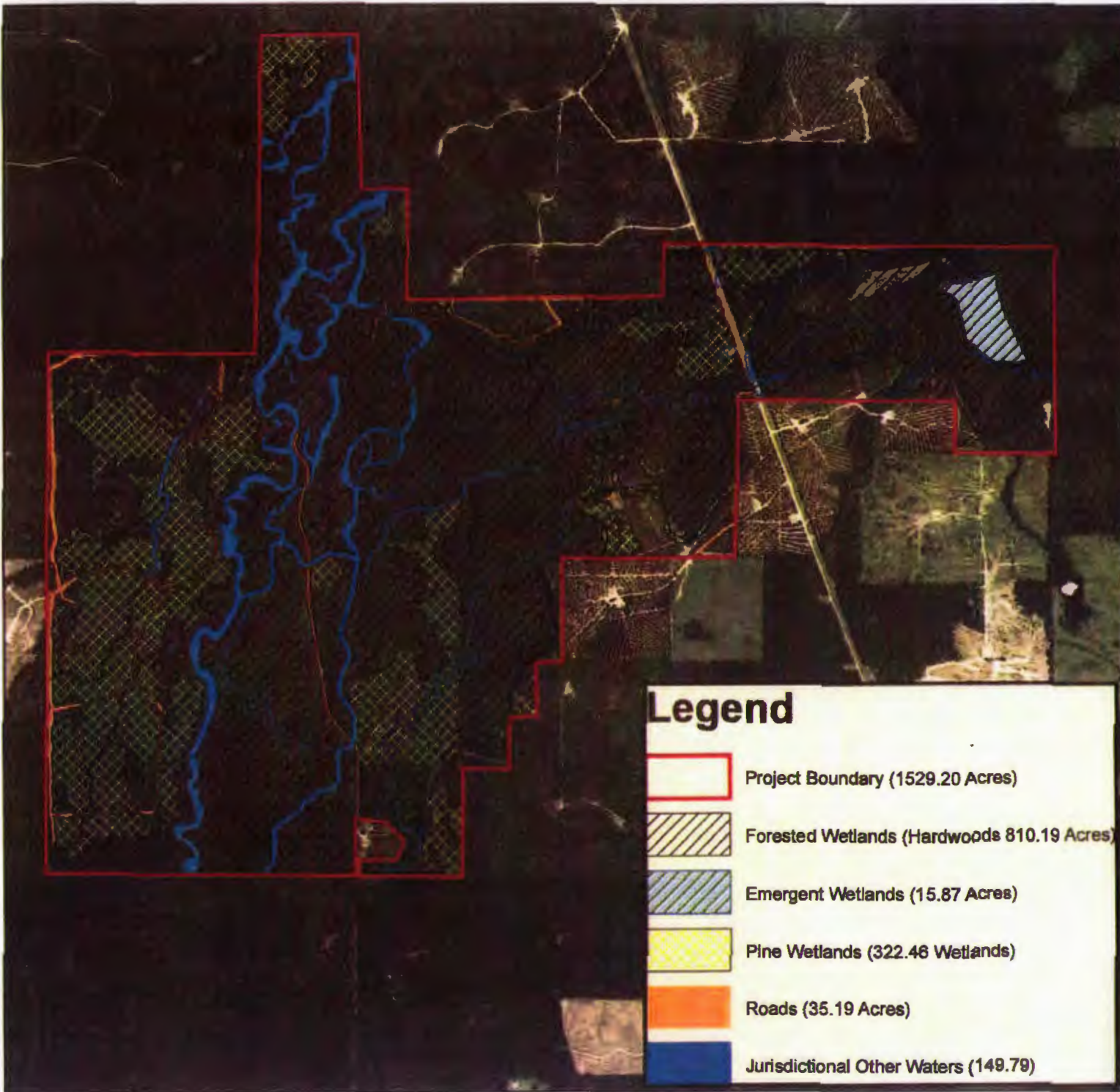
Comments on this proposed mitigation bank may be provided to the Corps at the address below. Comments should be received no later than the expiration date of this public notice.

Please provide comments to:

**U.S. Army Corps of Engineers  
Vicksburg District  
ATTN: CEMVK-OD-F  
4155 Clay Street  
Vicksburg, Mississippi 39183-3485**

  
for **Anne S. Woerner  
Chief, Evaluation Section  
Regulatory Branch**





9 April 2014  
MVK-2014-141

Applicant:  
Loneoak Capital Management, LLC  
Proposed Work:  
Mitigation Bank  
Location:  
Section 8, T18N-R5W  
Arcadia, LA Quadrangle  
Bienville Parish, Louisiana  
Map Background:  
NAIP Aerial Imagery (2010)

**Preliminary  
Jurisdictional Determination**

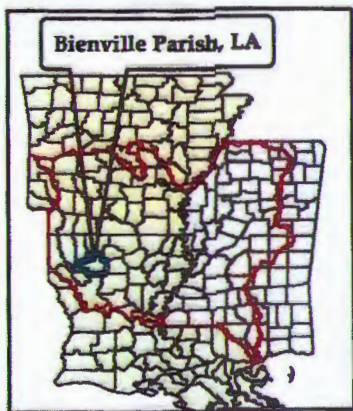
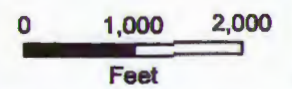
Prepared by:  
Jim Cole



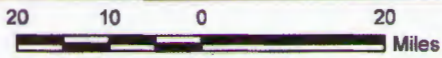
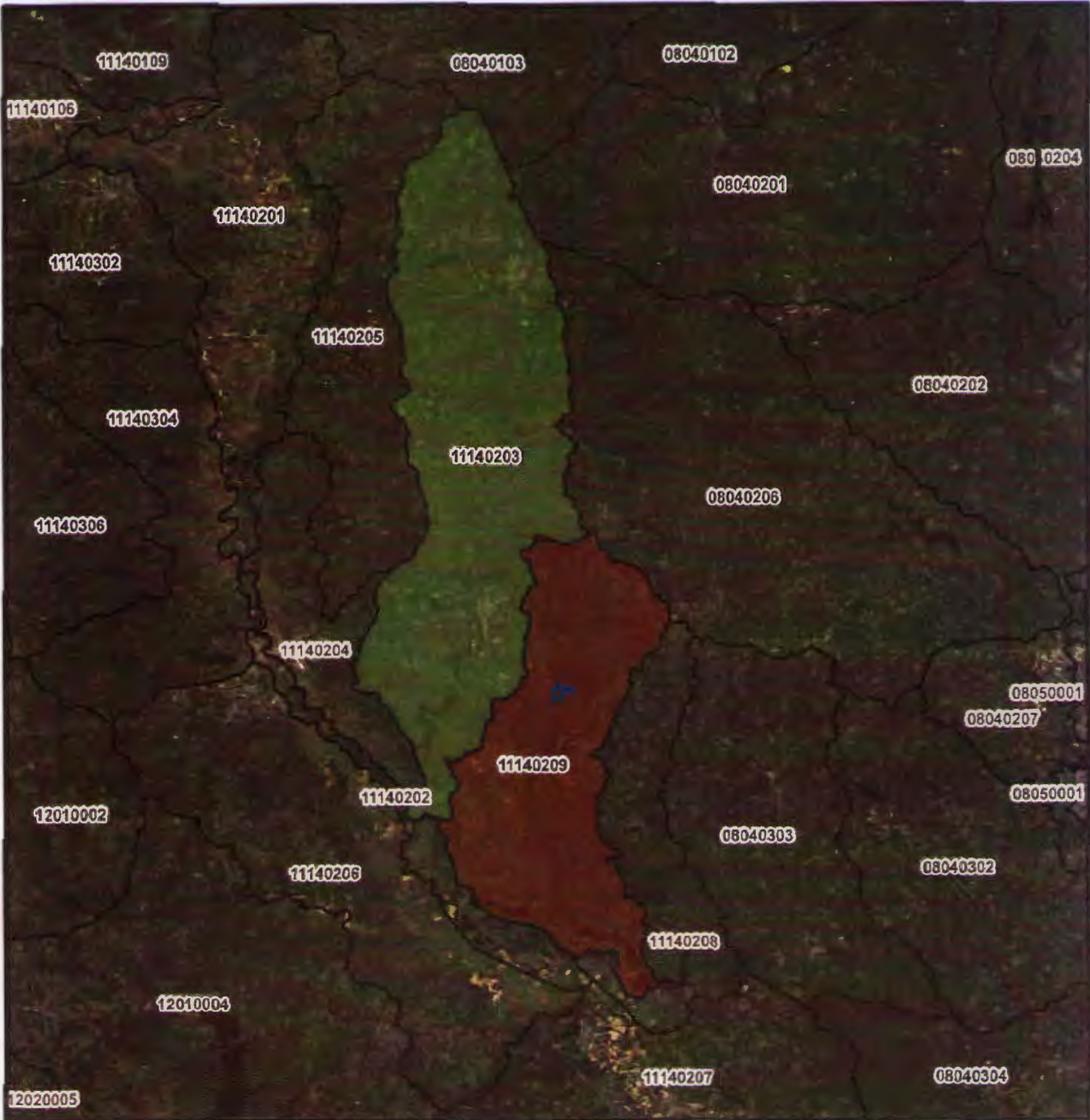
**US Army Corps  
of Engineers.**

**Regulatory Branch**

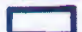



**Enforcement Section**







**Legend**

-  Bashaway Creek Mitigation Bank (1,529.20 acres)
-  Hydrologic Unit Boundary
-  Primary Service Area
-  Secondary Service Area

**Reference**

Base map comprised of ESRI World Imagery.

**Service Area Map**

Mitigation Bank Prospectus  
Bienville Parish, Louisiana

**Loneoak Capital Management, LLC**  
Bashaway Creek Mitigation Bank



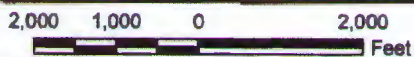
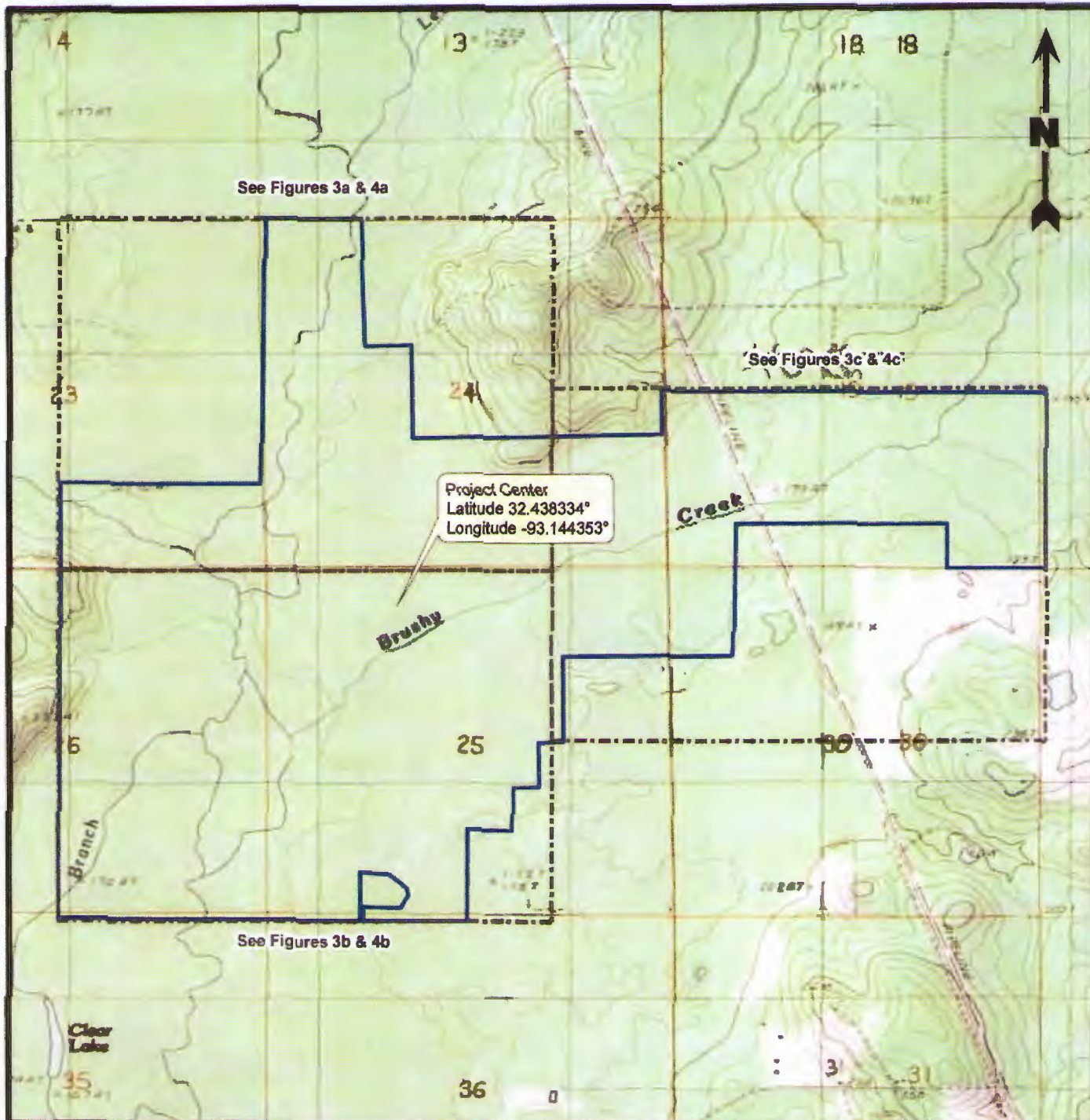
Drawn By	CT	5/2/2014
Checked By	JCR	5/2/2014
Approved By	LAW	5/2/2014
Project Number		

**CEMVK-OD-FE RVH-MVK-2014-569**



**LONEOAK CAPITAL MANAGEMENT, LLC**

Loneoak Engineering and Environmental Group LLC





**Legend**

-  Bashaway Creek Mitigation Bank (1,529.20 acres)
-  Mapbook Index

**Reference**

Base map comprised of U.S.G.S. 7.5 minute topographic maps, "Fryeburg, LA" and "Sailes, LA" dated 1986.

**Site Location Map**

Mitigation Bank Prospectus  
Bienville Parish, Louisiana

**Loneoak Capital Management, LLC**  
Bashaway Creek Mitigation Bank



Drawn By	CT	5/1/2014
Checked By	JCR	5/1/2014
Approved By	LAW	5/1/2014
Eminent Number		

**CEMVK-OD-FE RVH-MVK-2014-569**

**LONEOAK CAPITAL MANAGEMENT, LLC**

Engineering and Environmental Group LLC