



**US Army Corps
of Engineers.**

Vicksburg District
4155 Clay Street
Vicksburg, MS 39183-3435
www.mvk.usace.army.mil



Public Notice

APPLICATION NO.:	KWH-MVK-2015-472
EVALUATOR:	Ms. Kristi Hall
PHONE NO.:	(601) 631-7528
FAX NO.:	(601) 631-5459
E-MAIL:	Kristi.W.Hall@usace.army.mil
DATE:	April 14, 2016
EXPIRATION DATE:	May 14, 2016

Interested parties are hereby notified that the U.S. Army Corps of Engineers, Vicksburg District, is considering a proposal to establish the Cane River Mitigation Bank (CRMB). A prospectus has been received describing the proposed bank from Delta Land Services, LLC, the bank Sponsor. The proposed site is located in Sections 72 and 73, T6N-R5W and Sections 63, 65, 71, 72, 79 and 81, T6N-R5W, Natchitoches Parish, Louisiana. (enclosure).

Description: The CRMB is being proposed by the bank sponsor as a means to meet the requirements for compensatory mitigation for future and yet unknown wetland and stream losses which may be permitted by the Corps under the authority of Section 404 of the Clean Water Act.

The proposed bank site is approximately two miles northwest of Chopin, Louisiana. The site is adjacent to Interstate 49 and traversed by Louisiana State Highway 1, which separates CRMB into two tracts. The site is currently used for pastureland and is bordered by pastureland and hardwood forest.

Baseline Conditions / Current Land Use / Proposed Actions:

The property consists of approximately 928.4 acres, with 488.9 acres of emergent wetlands, 11,660 feet of intermittent streams, and 7.16 acres of other waters of the U.S. (open water habitat).

The proposed CRMB site has been historically, and is currently, managed as pastureland. Vegetation can be characterized by emergent wetlands and upland pasture areas.

Dominant species in emergent pasture wetlands are white clover (*Trifolium repens*), perennial rye (*Lolium perenne*), Brazilian vervain (*Verbena brasiliensis*), Carolina horsenettle (*Solanum carolinense*), Vasey's grass (*Paspalum urvillei*), curly dock (*Rumex crispus*) and various spikerushes (*Eleocharis* spp.). Clusters of bahiagrass (*Paspalum notatum*), Bermuda grass (*Cynodon dactylon*), Carolina geranium (*Geranium carolinianum*), spiny fruit buttercup (*Ranunculus muricatus*), and southern dewberry (*Rubus trivialis*) also exist throughout the project area. The wetter areas of pasture in Tract A contain hydrophytic herbaceous species such as dotted smartweed (*Persicaria punctata*), narrow leaf cattail (*Typha angustifolia*), lamp rush (*Juncus effusus*), and various sedges (*Carex* spp.).

The Natural Resources Conservation Service (NRCS) has mapped the soils in the proposed mitigation bank as Perry clay, Moreland clay, Latanier clay, Moreland silt loam and Gallion silty clay loam. These map units contain varying degrees of hydric soil components. The Perry Clay and Moreland Clay map units have hydric component ratings of 80% and 90% respectively, while the remaining map units have a 1% rating (NRCS 2015 National Hydric Soil List). Hydric indicators observed on the project area are depleted matrix - dark surface and red parent material (with wetland hydrology and dominance of wetland vegetation).

The proposed CRMB site is located in the Lake Iatt Subbasin of the Red River, within the United States Geological Survey (USGS) Hydrologic Unit Code (HUC) 11140207. The hydrogeomorphic wetland class of CRMB is a combination of riverine wetlands and depressional wetlands, with primary sources of hydrology from a riverine backwater flooding, overland flow from adjacent lands, and direct precipitation.

The Bank restoration plan includes re-establishing 222.1 acres of bottomland hardwood/baldcypress swamp forest, rehabilitating 451.8 acres of hardwood/baldcypress swamp forest, and restoring 13,535.9 linear feet of degraded streams. The proposed work plan involves backfilling of artificial drains, afforestation of wetlands and riparian buffers, fluvial geomorphological restoration of streams, and implementation of effective short-term management strategies to successfully establish the mitigation bank.

Service Area: This Mitigation Bank would be established to provide mitigation to compensate for impacts to waters of the United States, including wetlands, within the Corps of Engineers Vicksburg District Regulatory Boundary in the state of Louisiana. The proposed service area for this mitigation bank is demarcated by the United States Geologic Survey as hydrologic unit codes 11140207, 11140206 and 11140202 for primary service areas. Decisions authorizing the use of credits from the Mitigation Bank will be made by the appropriate authority on a case by case basis in accordance with all applicable requirements.

Comments on this proposed mitigation bank may be provided to the Corps at the address below. Comments should be received no later than the expiration date of this public notice. The prospectus, which outlines the conceptual plan for the bank, is available at the following website:

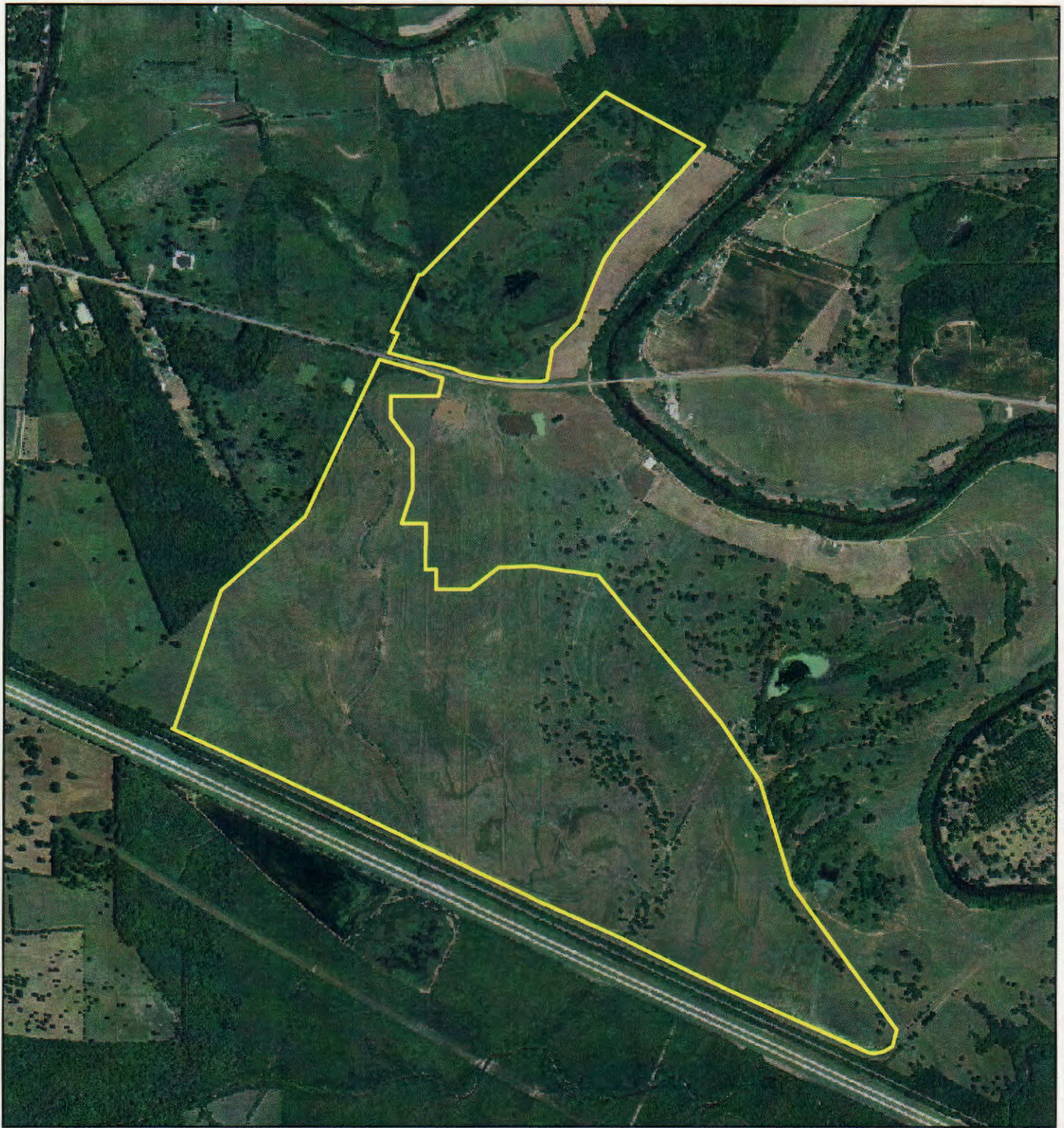
<http://www.mvk.usace.army.mil/Missions/Regulatory/PublicNotices.aspx>

The prospectus is available for review at the Vicksburg District, Corps of Engineers at the address given below.

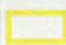
Please provide comments to:

U.S. Army Corps of Engineers
Vicksburg District
ATTN: CEMVK-OD-F
4155 Clay Street
Vicksburg, Mississippi 39183-3485


Thomas A. McCabe
Thomas A McCabe
Chief, Evaluation Section
Regulatory Branch



Legend

 Project Area (928.4 ac)



0 900 1,800 3,600

Feet

Cane River Mitigation Bank

2015 Aerial Photograph

Natchitoches Parish, LA

Created : TSC/ARCVIEW

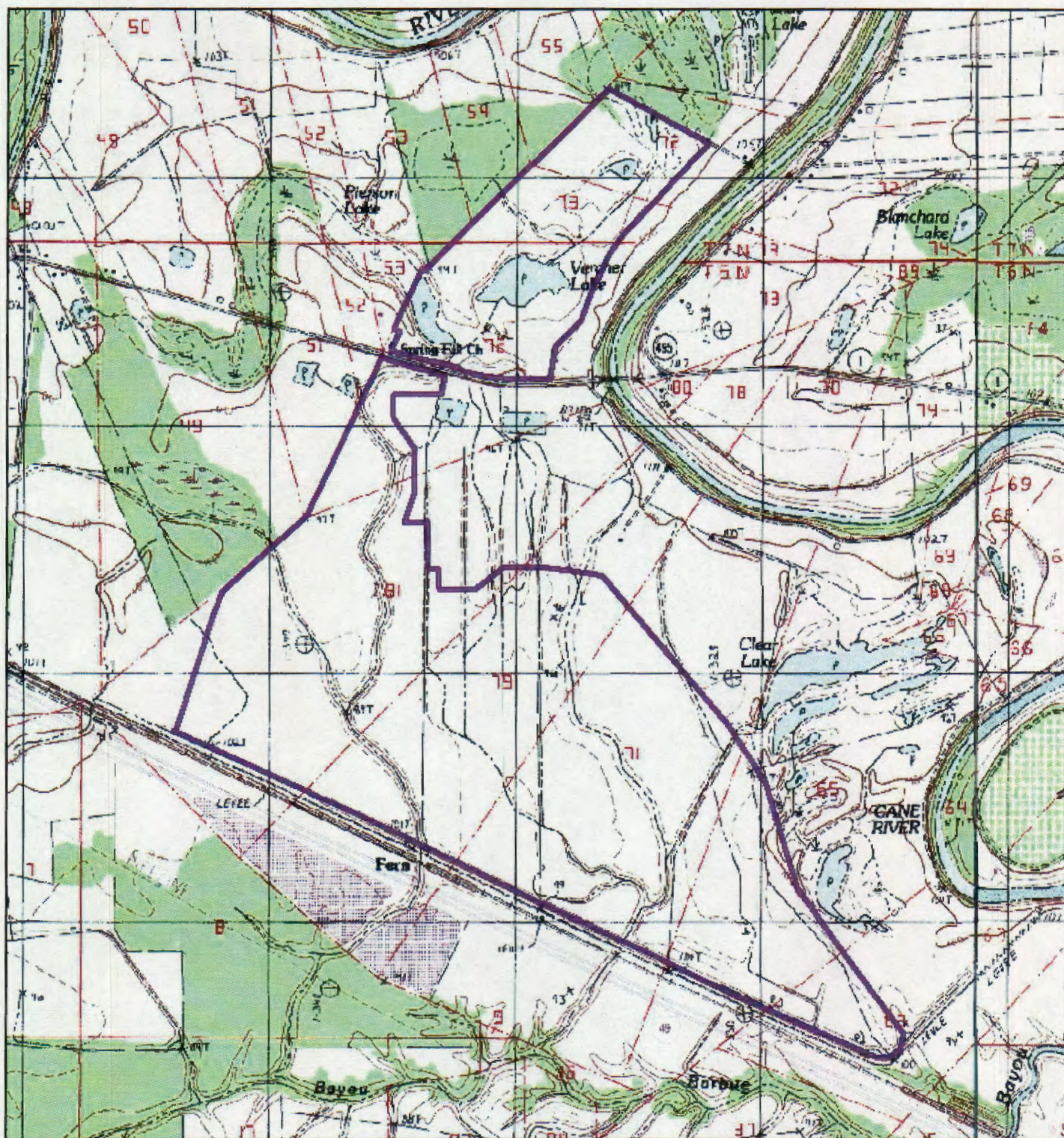
Approved : DEB

Date : 3/7/2016

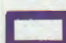
Map No. : F15_Aerials



FIGURE 15



Legend

 Project Area (928.4 ac)



0 1,000 2,000 4,000
Feet

Source: USGS 7.5-Minute Quadrangle "Cloutierville, LA"

Cane River Mitigation Bank

USGS QUADRANGLE MAP

Natchitoches Parish, LA

Created : TSC/ARCVIEW

Approved : DEB

Date : 3/7/2016

Map No. : F02_QuadMap



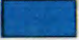




FIGURE 2

31.522302
-92.897255

1:21,500

Legend

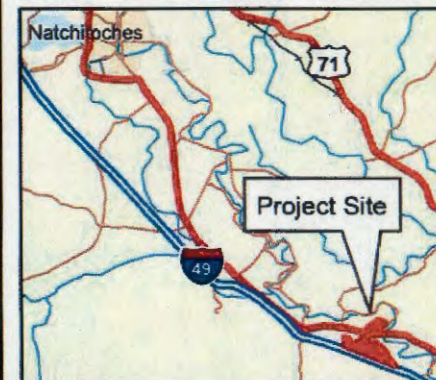
-  Project Boundary
-  Emergent Wetland (489.90 Acres)
-  Other Water (7.16 Acres)
-  Seasonal RPW with Wetlands (6.95 Acres, 11,660 ft)
-  Non-Jurisdictional Stock Pond (0.34 Acres)

Natchitoches Parish, LA



8 September 2015
MVK-2015-472

Delta Land Services
Proposed Cane River Compensatory
Mitigation Site
1086.8 - Acre Site
Natchitoches Parish, LA
Preliminary
Jurisdictional Determination
Aaron Posner



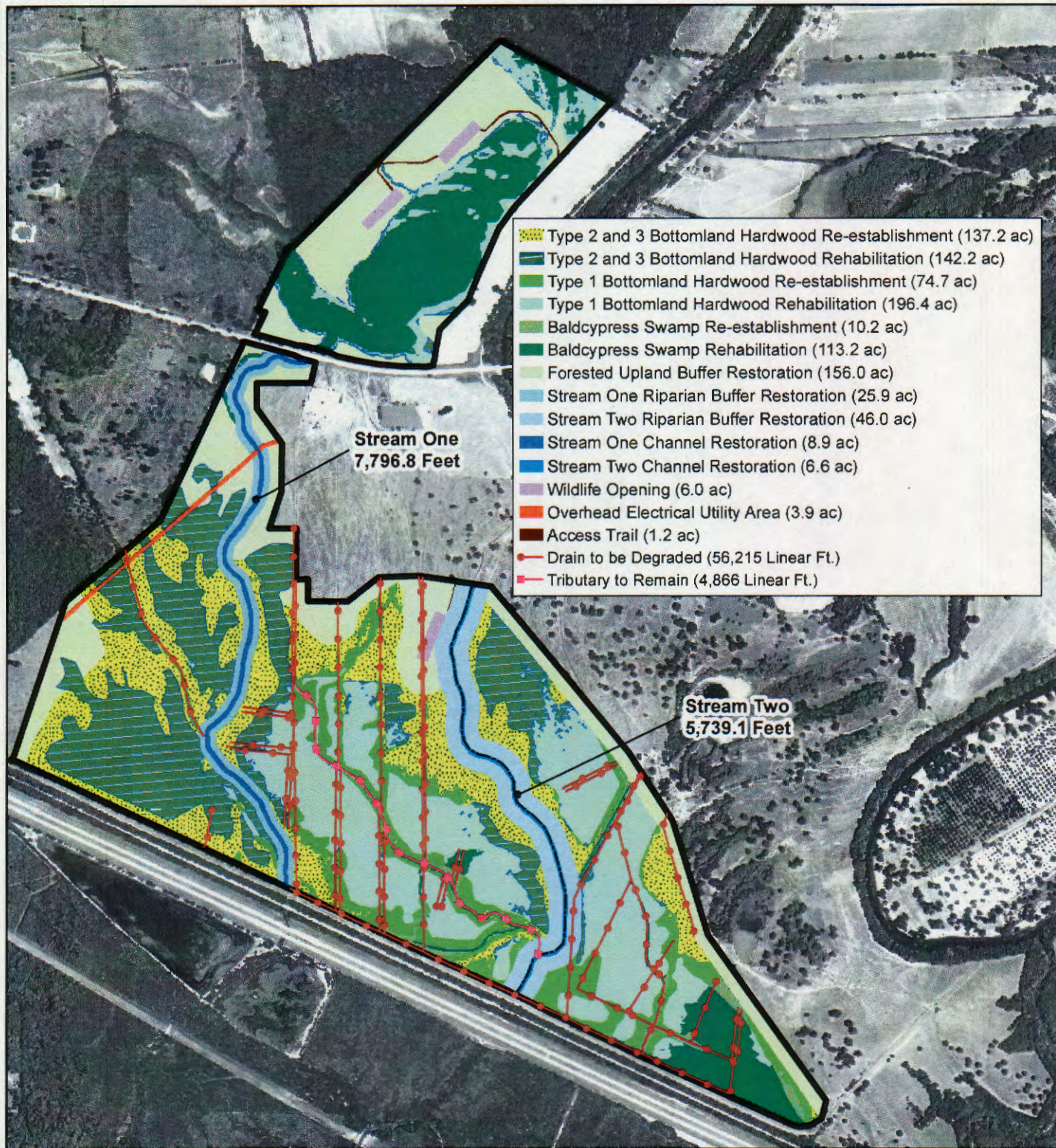
US Army Corps
of Engineers



Regulatory Branch
Enforcement Section

0 1,050 2,100
Feet

Enclosure 1



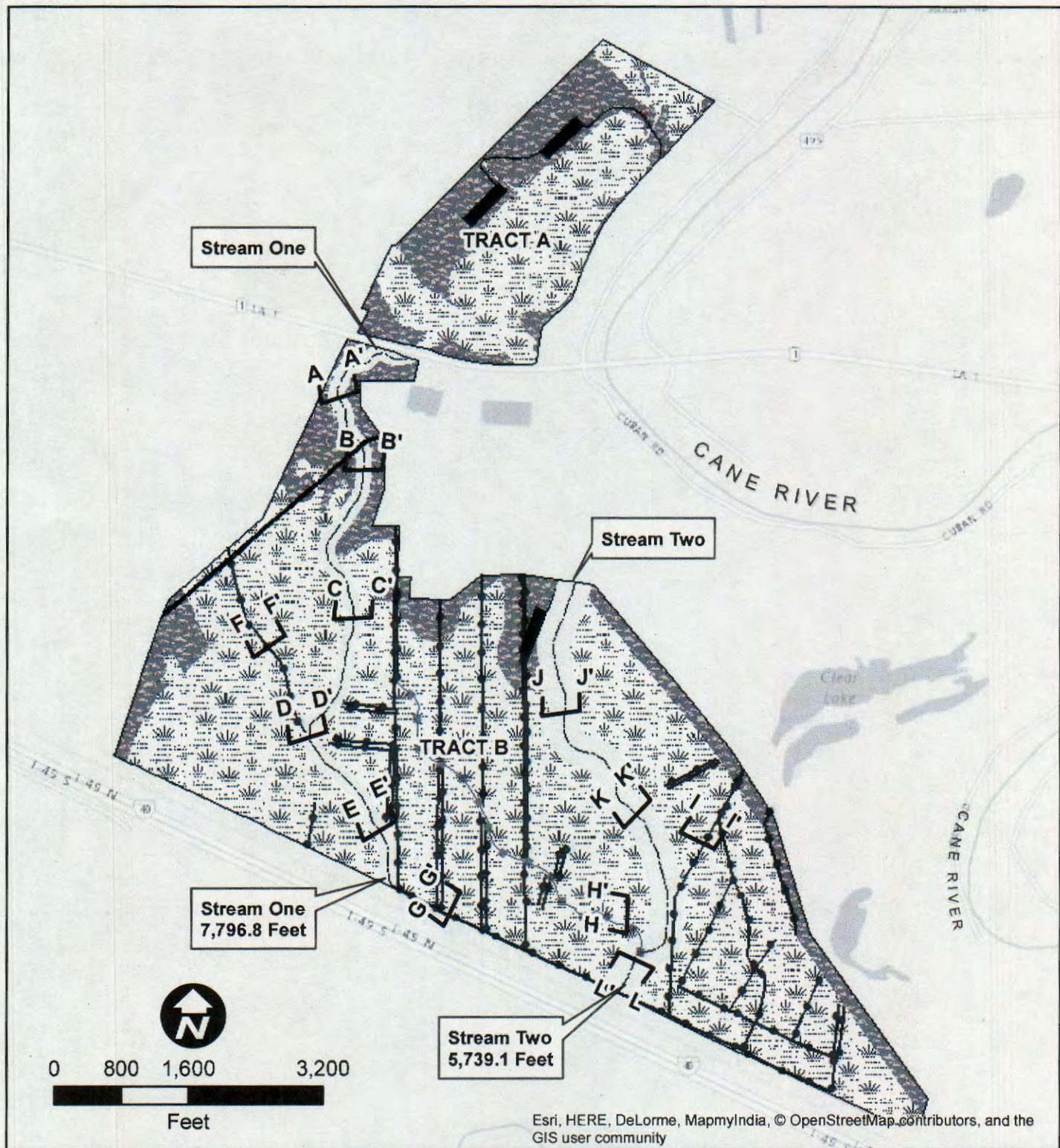
0 800 1,600 3,200
Feet

Cane River Mitigation Bank
MITIGATION FEATURES MAP
Natchitoches Parish, LA

Created : TSC/ARCVIEW
Approved : DEB
Date : 3/7/2016
Map No. : F03_mitigationfeatures



FIGURE 3



Legend

- Project Area (928.4 acres)
- Forested Wetland Restoration (673.8 acres)
- Forested Upland Restoration (156.0 acres)
- Stream Channel/ Riparian Buffer Restoration (87.4 acres)
- Open Space (11.1 acres)
- Drain to be Degraded (56,215 feet)
- Tributary to Remain (4,866 feet)

Cane River Mitigation Bank

HYDROLOGIC RESTORATION PLAN VIEW

Natchitoches Parish, LA

Created : TSC/ARCVIEW

Approved : DEB

Date : 3/7/2016

Map No. : C-1_Planview



FIGURE C-1