



**US Army Corps
of Engineers**

Vicksburg District
4155 Clay Street
Vicksburg, MS 39183-3435
www.mvk.usace.army.mil



Public Notice

APPLICATION NO.:	MVK-2015-466
EVALUATOR:	Ms. Kristi Hall
PHONE NO.:	(601) 631-7528
FAX NO.:	(601) 631-5459
E-MAIL:	Kristi.W.Hall@usace.army.mil
DATE:	May 10, 2016
EXPIRATION DATE:	June 10, 2016

Interested parties are hereby notified that the U.S. Army Corps of Engineers, Vicksburg District, is considering a proposal to establish the Red Chute Mitigation Bank (RCMB). A prospectus has been received describing the proposed bank from Fifth Louisiana Resource, LLC c/o Resource Environmental Solutions, LLC, the bank Sponsor. The proposed site is located in Sections 7, 18, 19, T20N-R13W, Bossier Parish, Louisiana.

Description: The RCMB is being proposed by the bank sponsor as a means to meet the requirements for compensatory mitigation for future and yet unknown wetland losses which may be permitted by the Corps under the authority of Section 404 of the Clean Water Act.

The proposed bank site is approximately one mile northwest of Benton, Louisiana. The site is 0.5 mile west of Highway 3 and 1.5 east of the Red River, and is centered on the point 32.722714° N, 93.74873° W. The site is currently managed as a loblolly pine plantation.

Baseline Conditions / Current Land Use / Proposed Actions:

The property consists of approximately 981.5 acres, with 536.5 acres of wet pine plantation, 36.1 acres of bottomland hardwoods, and 5,570 feet of perennial streams.

The proposed RCMB site has been historically, and is currently, managed as loblolly pine plantation. Vegetation can be characterized by short rotation forested pine wetlands.

Dominant species in emergent pasture wetlands are loblolly pine (*Pinus taeda*) forests with a small percentage of white oak (*Quercus alba*), willow oak, and cherrybark oak. The sapling and shrub layer in the upland habitat is dominated by the aforementioned species as well as cedar elm (*Ulmus crassifolia*), water oak, green ash, pignut hickory (*Carya glabra*), sweetgum, eastern red cedar (*Juniperus virginiana*), American beautyberry (*Callicarpa americana*), eastern baccharis (*Baccharis halimifolia*), winged sumac (*Rhus copallinum*), and devil's walkingstick (*Aralia spinosa*). The dominant species in the herbaceous and vine layers include sawtooth blackberry (*Rubus argutus*), eastern poison ivy (*Toxicodendron radicans*), muscadine (*Vitis rotundifolia*), Alabama supplejack (*Berchemia scandens*), Virginia creeper (*Parthenocissus quinquefolia*), littlehead nutrush (*Scleria oligantha*), Asiatic dayflower (*Commelina communis*), and Japanese honeysuckle (*Lonicera japonica*).

The Natural Resources Conservation Service (NRCS) has mapped the soils in the proposed mitigation bank as Ashford silty clay (hydric rating-96), Gore silt loam (non-hydric), Guyton-Ouachita silt loam (hydric rating-50), Wrightsville silt loam (hydric rating-80), Bowie fine sandy loam (not hydric), and Kolin silt loam (hydric rating-4). Hydric soil indicators observed included depleted matrix, Hydrology is primarily rainwater driven with some overbank flooding around Black Bayou.

The proposed RCMB site is located in the Red Chute Bayou watershed of the Red River, within the United State Geological Survey (USGS) Hydrologic Unit Code (HUC) 11140204. The hydrogeomorphic wetland class of RCMB is a combination of riverine wetlands and depressional wetlands, with primary sources of hydrology from a riverine backwater flooding, overland flow from adjacent lands, and direct precipitation.

The Bank restoration plan includes enhancement of 536.5 acres, re-establishment of 367.2 acres, 36.1 acres of preservation, and 41.7 acres of area not included in mitigation. The proposed work plan involves removing existing vegetation and replanting with an appropriate combination of hard and soft mast producing bare-root stock. Soils will be prepared by deep-ripping soils. Small lateral drains would be graded down and beds would be eliminated.

Service Area: This Mitigation Bank would be established to provide mitigation to compensate for impacts to waters of the United States, including wetlands, within the Corps of Engineers Vicksburg District Regulatory Boundary in the state of Louisiana. The proposed service area for this mitigation bank is demarcated by the United States Geologic Survey as hydrologic unit codes 11140204, 11140202 and 11140203. Decisions authorizing the use of credits from the Mitigation Bank will be made by the appropriate authority on a case by case basis in accordance with all applicable requirements.

Comments on this proposed mitigation bank may be provided to the Corps at the address below. Comments should be received no later than the expiration date of this public notice. The prospectus, which outlines the conceptual plan for the bank, is available at the following website:

<http://www.mvk.usace.army.mil/Missions/Regulatory/PublicNotices.aspx>

The prospectus is available for review at the Vicksburg District, Corps of Engineers at the address given below.

Please provide comments to:

U.S. Army Corps of Engineers
Vicksburg District
ATTN: CEMVK-OD-F
4155 Clay Street
Vicksburg, Mississippi 39183-3485

Thomas A. McCabe
Thomas A McCabe
Chief, Evaluation Section
Regulatory Branch

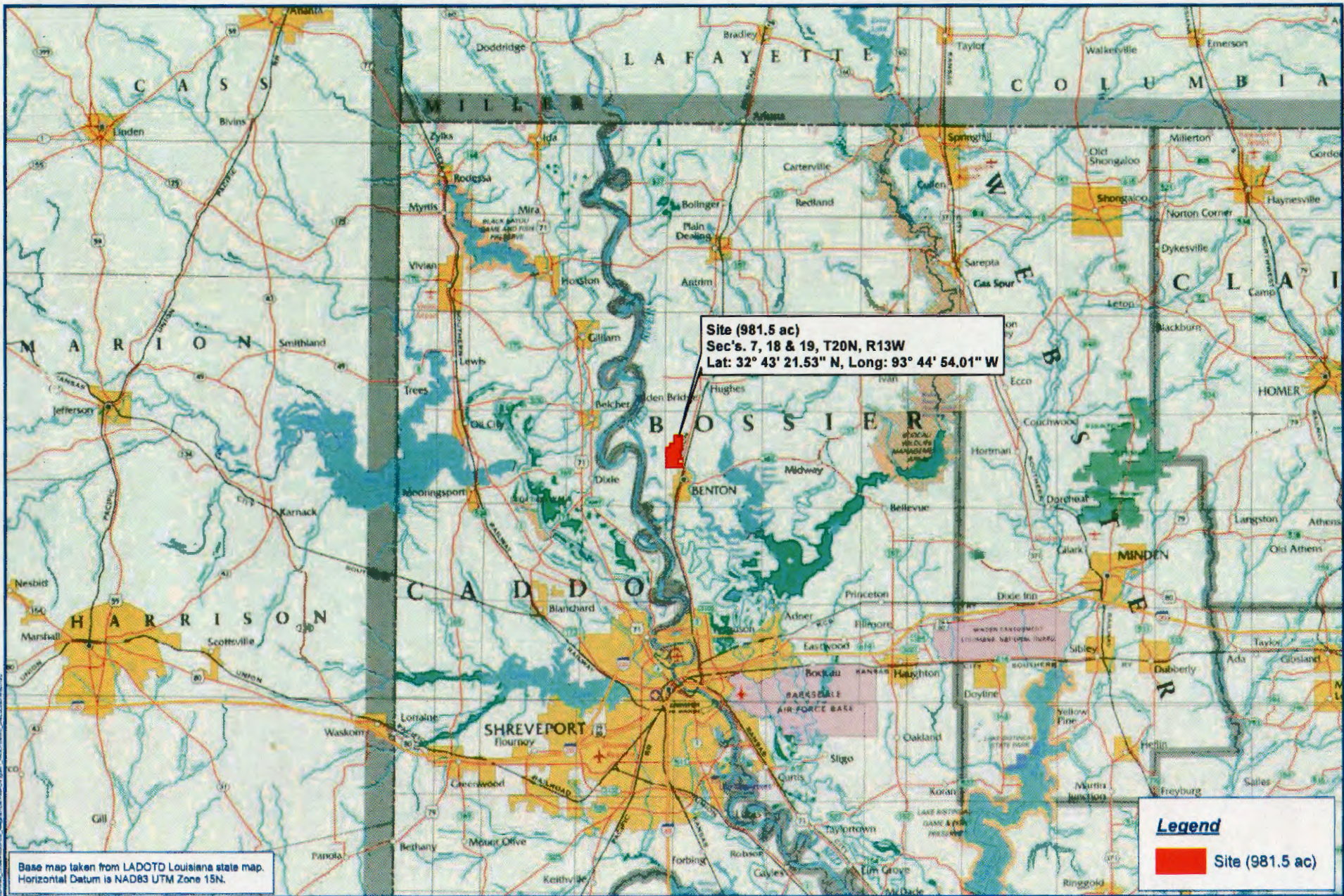


FIGURE 1

**RED CHUTE MITIGATION BANK
 SITE LOCATION MAP**

BOSSIER PARISH, LOUISIANA



Date: 10/1/2015
Drawn by: BL
Checked by: RG



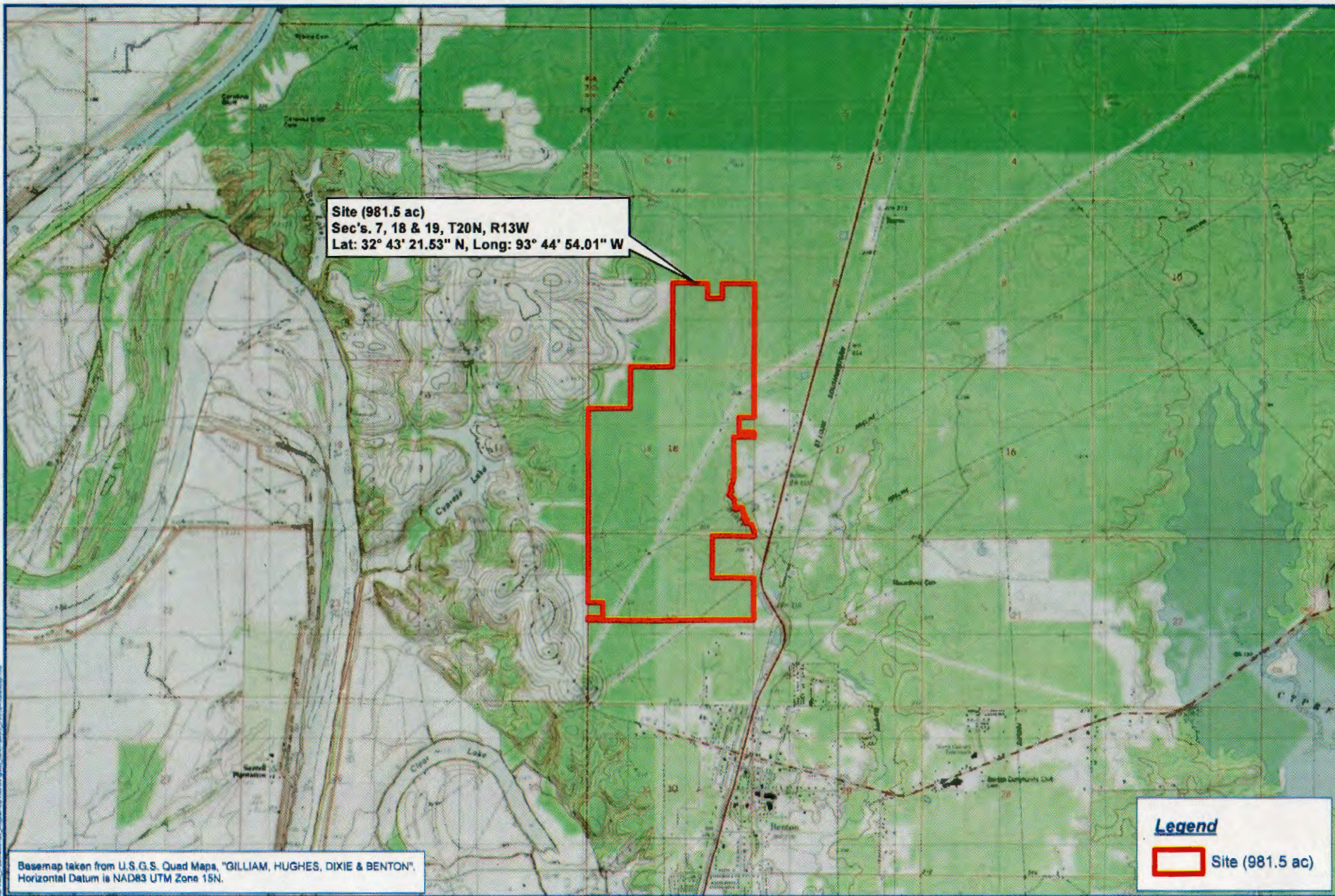


FIGURE 2

RED CHUTE MITIGATION BANK
 U.S.G.S. 24K QUAD MAP
 BOSSIER PARISH, LOUISIANA



Date: 10/1/2015
Drawn by: BL
Checked by: RG



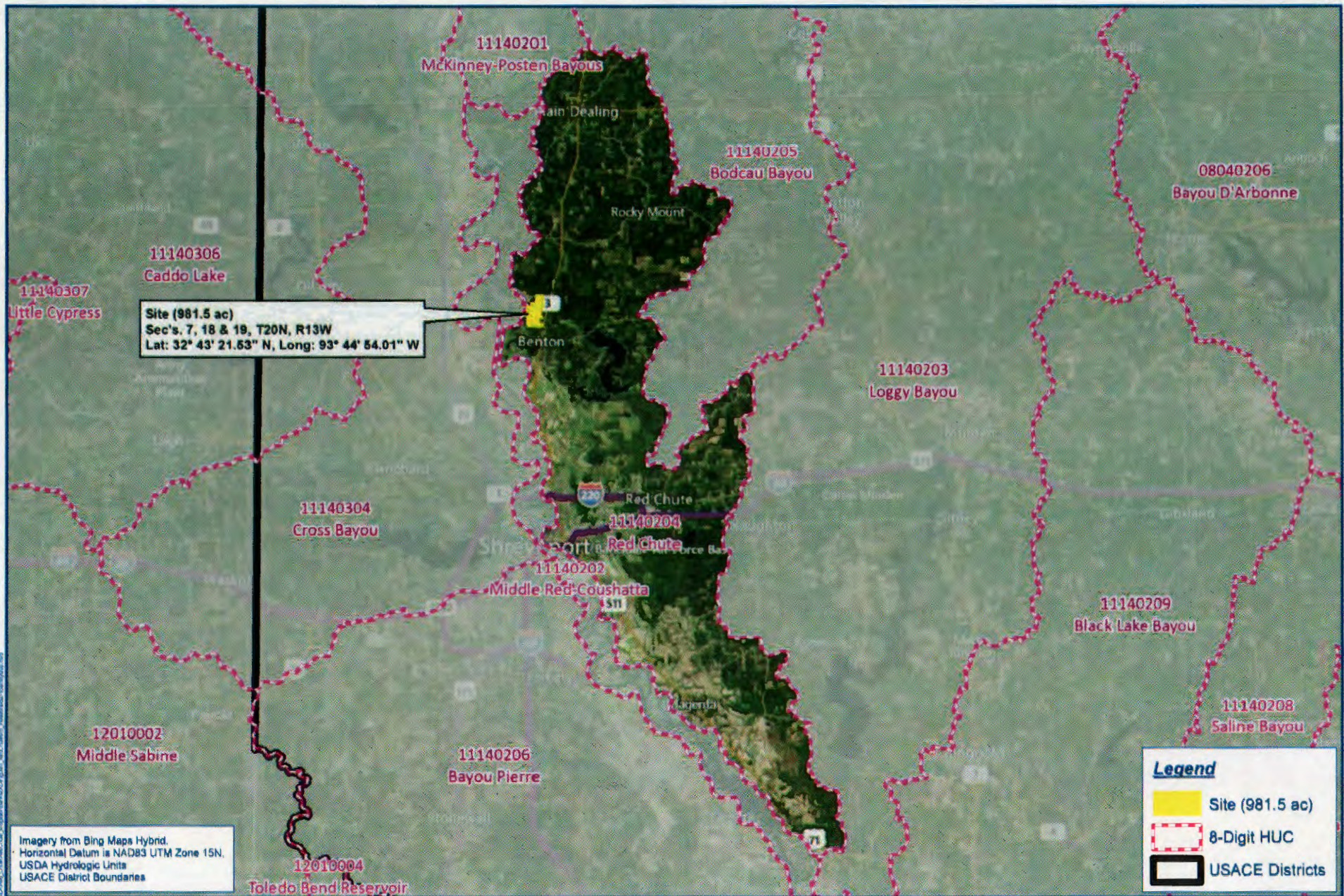


FIGURE 3

**RED CHUTE MITIGATION BANK
 WATERSHED & PROXIMITY MAP**

BOSSIER PARISH, LOUISIANA

Date: 10/1/2015






Drawn by: BL

Checked by: RG

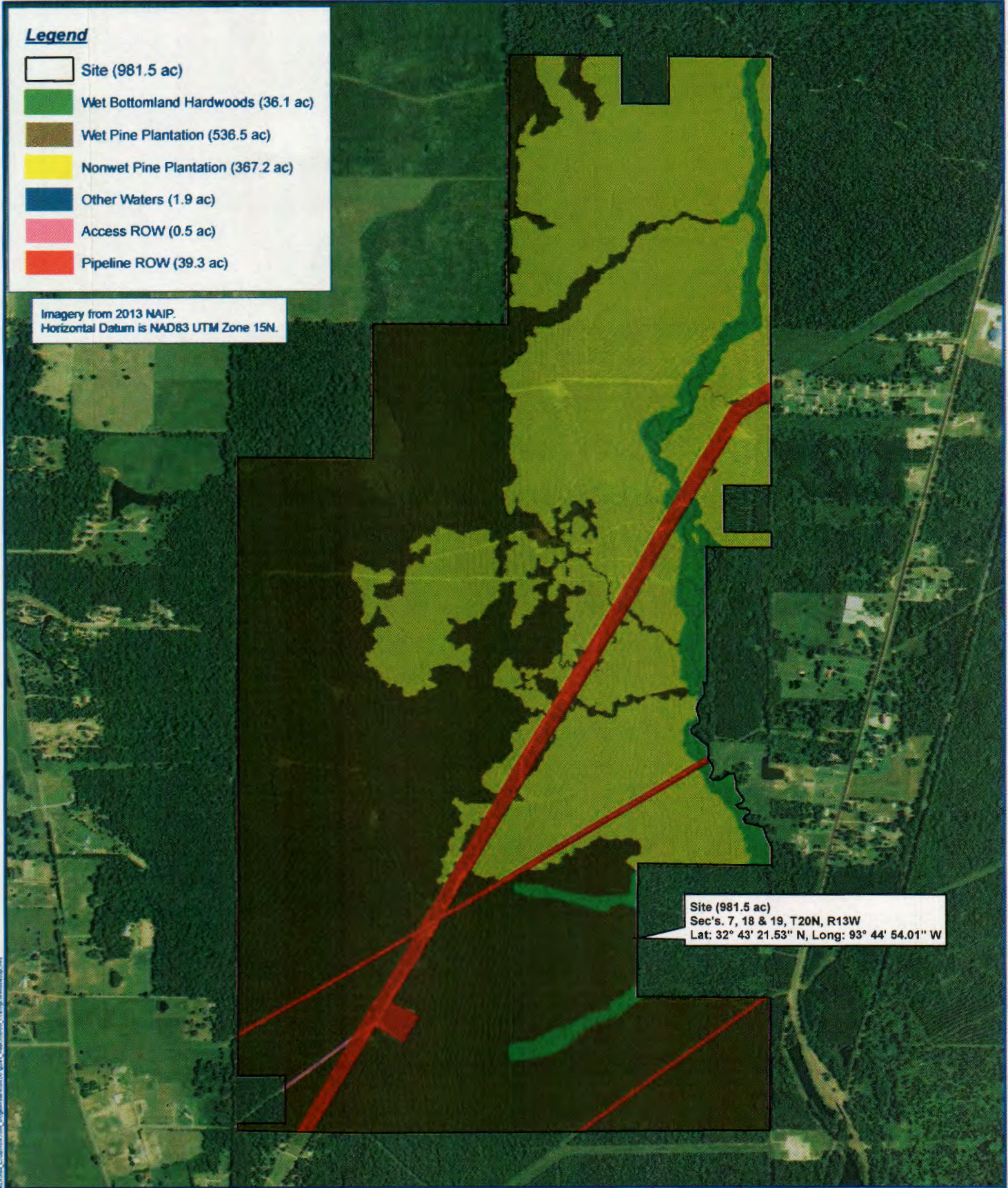


Imagery from Bing Maps Hybrid.
 Horizontal Datum is NAD83 UTM Zone 15N.
 USDA Hydrologic Units
 USACE District Boundaries

Legend

-  Site (981.5 ac)
-  Wet Bottomland Hardwoods (36.1 ac)
-  Wet Pine Plantation (536.5 ac)
-  Nonwet Pine Plantation (367.2 ac)
-  Other Waters (1.9 ac)
-  Access ROW (0.5 ac)
-  Pipeline ROW (39.3 ac)

Imagery from 2013 NAIP
Horizontal Datum is NAD83 UTM Zone 15N.



Site (981.5 ac)
Sec's. 7, 18 & 19, T20N, R13W
Lat: 32° 43' 21.53" N, Long: 93° 44' 54.01" W

FIGURE 4

**RED CHUTE MITIGATION BANK
EXISTING CONDITIONS MAP**

BOSSIER PARISH, LOUISIANA



0 500 1,000



Feet

Date: 10/1/2015

Drawn by: BL

Checked by: RG



Source: N/A. Imagery: 2013 NAIP. Horizontal Datum: NAD83 UTM Zone 15N. Legend: See Legend. Date: 10/1/2015. Drawn by: BL. Checked by: RG.

Legend

Site (981.5 ac)

MUSYM, MUname

- AsA; Ashford silty clay, 0 to 1 percent slopes
- BoC; Bowie fine sandy loam, 1 to 5 percent slopes
- GYA; Guyton-Ouachita silt loams, frequently flooded
- GoC; Gore silt loam, 1 to 5 percent slopes
- KoC; Kolin silt loam, 1 to 5 percent slopes
- WrA; Wrightsville silt loam, 0 to 1 percent slopes

Soil data provided by SSURGO
Horizontal Datum is NAD83 UTM Zone 15N.

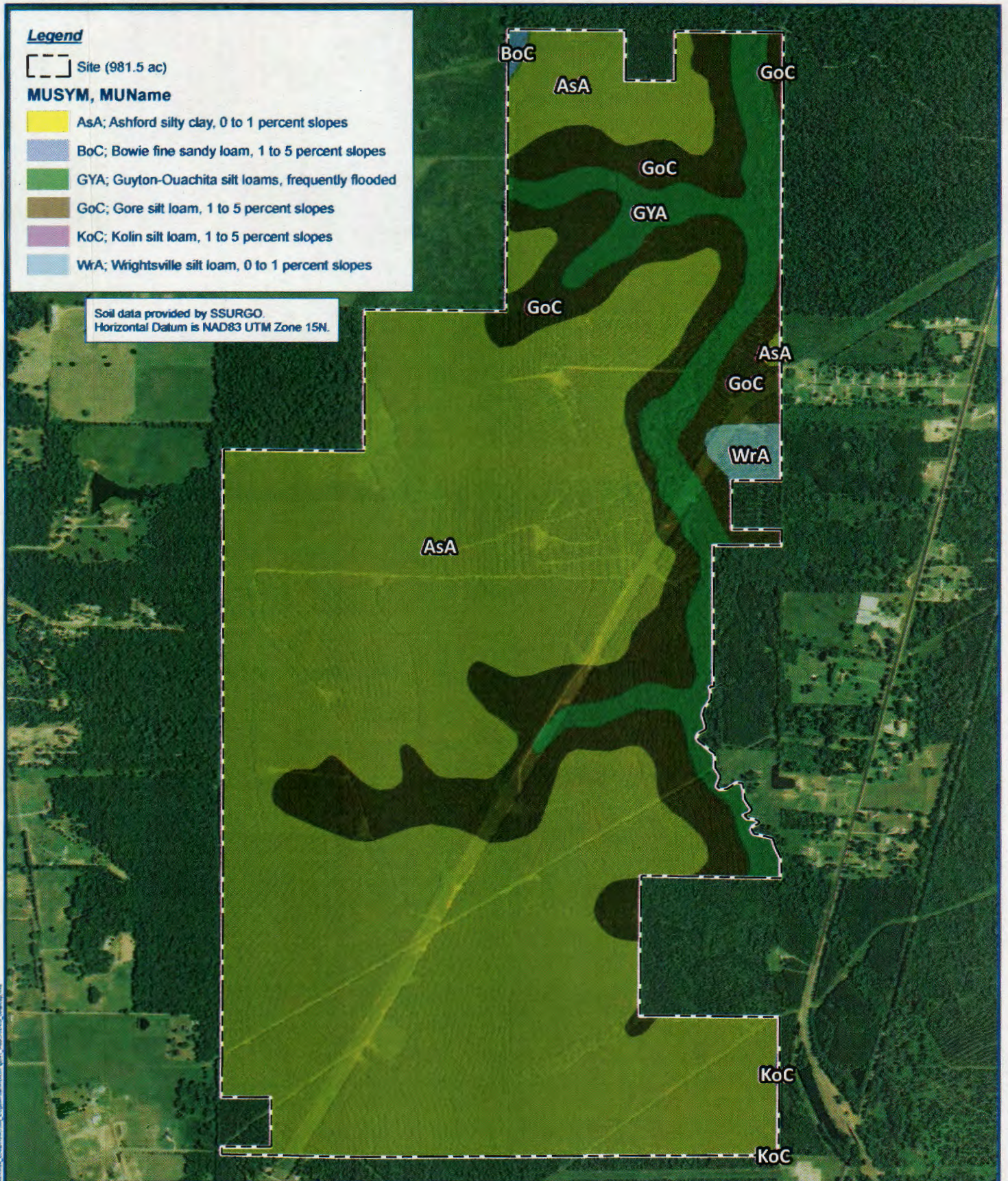


FIGURE 7

**RED CHUTE MITIGATION BANK
SOILS MAP**

BOSSIER PARISH, LOUISIANA

Date: 10/1/2015

Drawn by: BL

Checked by: RG



Document Path: F:\GIS\Projects\10151015\10151015_Soils_Map.mxd, C:\Users\bl\Documents\10151015_Soils_Map.mxd, C:\Users\bl\Documents\10151015_Soils_Map.mxd

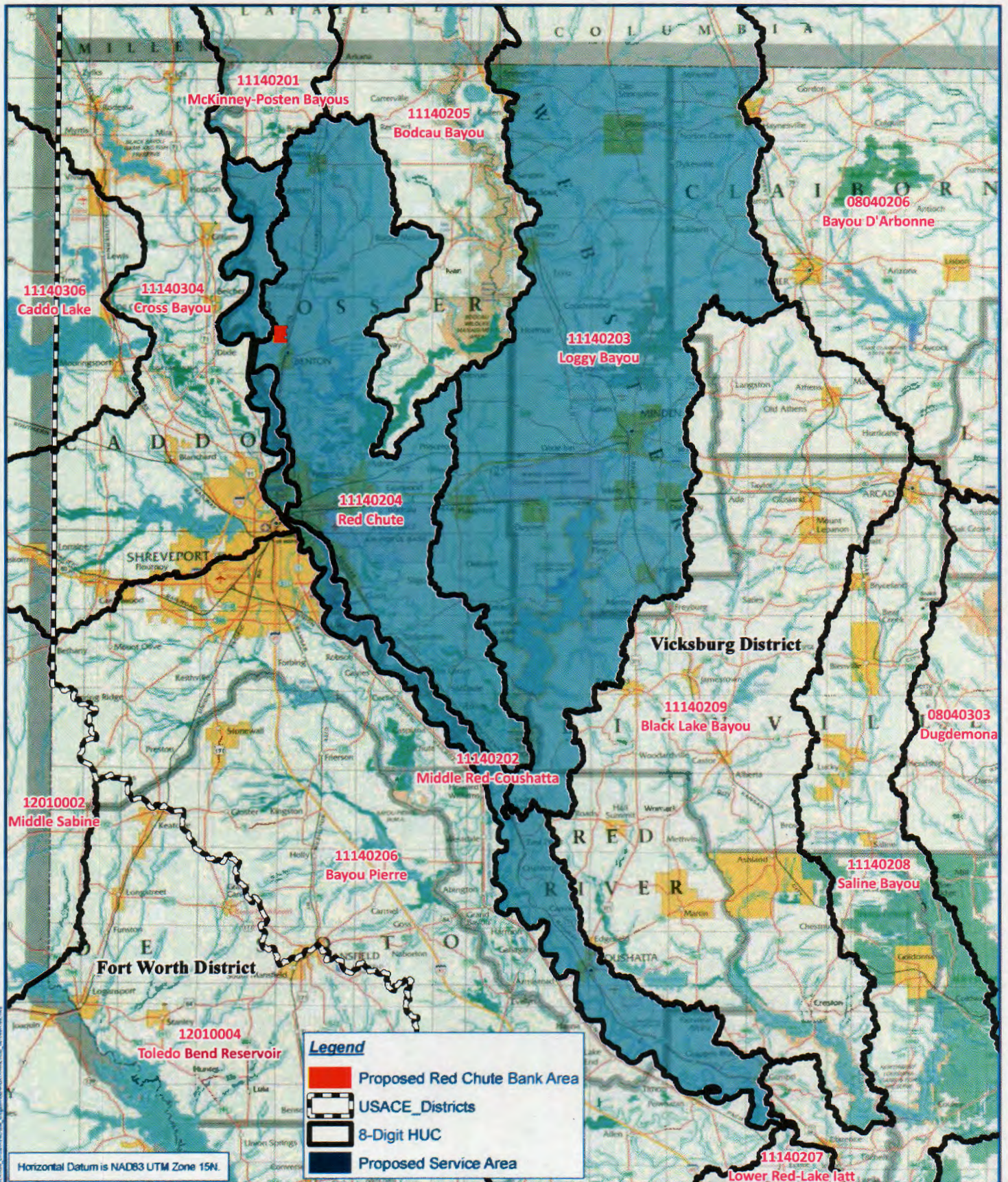


FIGURE 13
RED CHUTE MITIGATION BANK
PROPOSED SERVICE AREA MAP
BOSSIER PARISH, LOUISIANA

Date: 7/16/2015
 Drawn by: BL
 Checked by: xxxxxxxx

