



**US Army Corps
of Engineers**

Vicksburg District
4155 Clay Street
Vicksburg, MS 39183-3435
www.mvk.usace.army.mil



Public Notice

| | |
|------------------|------------------------------|
| APPLICATION NO.: | KWH-MVK-2012-632 |
| EVALUATOR: | Kristi Hall |
| PHONE NO.: | (601) 631-7528 |
| FAX NO.: | (601) 631-5459 |
| E-MAIL: | Kristi.W.Hall@usace.army.mil |
| DATE: | February 23, 2015 |
| EXPIRATION DATE: | March 25, 2015 |

Interested parties are hereby notified that the U.S. Army Corps of Engineers, Vicksburg District, is considering a proposal submitted by the Bank Sponsor, Whitehead Forestry Services, Inc., for the development of Big Creek Mitigation Bank, in Columbia County, Arkansas. A prospectus describing the proposed bank has been received describing the proposed work. The mitigation bank site is located in Section 3, Township 17 South, Range 20 West and Section 34, Township 16 South, Range 21 West of Columbia County, Arkansas (enclosure).

Description: This wetland mitigation bank is being proposed by the Bank Sponsor as a means to meet the requirements for compensatory mitigation for future, and as yet unknown, wetland and stream functional losses that would be permitted by the Corps under the authority of Section 404 of the Clean Water Act.

The Bank Sponsor proposes to develop an approximately 273 acre wetland and stream mitigation bank by restoring 156.6 acres of bottomland hardwood wetlands, enhancing 110.6 acres of bottomland hardwood wetlands, 5.7 acres of upland buffer and restoring and enhancing 30,375 linear feet of stream within the mitigation bank. The proposed work would increase wetland and stream functions within the Loggy Bayou watershed.

Baseline Conditions / Current Land Use / Proposed Actions:

Big Creek Mitigation Bank is approximately 273 acres and is located approximately one mile west of Magnolia, Arkansas. The site is centered at approximately latitude 33.2942° N, longitude -93.2680° W in Section 3, Township 17 South, Range 20 West and Section 34, Township 16 South, Range 21 West of Columbia County, Arkansas.

The site is currently characterized by agriculture fields dominated with emergent vegetation, a managed pine plantation, and upland habitats. Planted pines have been recently harvested and these areas are dominated by Chinese tallow. The property lies just west of the city of Magnolia, Arkansas and is bordered by US Highway 82, bottomland hardwood forests, low-density residential developments, and planted pine stands.

Mapped soil types within the site consist of Guyton silt loam, Harleston very fine sandy loam, and Bibb fine sandy loam. Over 85% of the site is underlain with Guyton silt loam, which is mapped as hydric.

Currently, the hydrology is primarily driven by rainfall, sheet flow, and drainage from offsite locations. The tract drains primarily from north to south via Big Creek and associated tributaries and from east to west via Barlow Branch and associated tributaries.

The Bank Sponsor proposes to restore bottomland hardwood wetlands at mitigation bank site by removing the existing vegetation and planting an appropriate species mixture of bottomland hardwood seedlings during the stand planting season (December-March). Following site preparation work, the sponsor will survey the site for remnant unnatural hydrologic influences (such as bedding) which will be removed to enhance onsite hydrology.

Proposed work will also include in-stream restoration and enhancement. Approximately 16,975 linear feet of a perennial channel, including Barlow Creek, will be restored to the natural dimension, pattern and profile. Approximately 11,250 linear feet of perennial channel, Big Creek, will be enhanced by using in-stream, natural channel design methods. Approximately, 2,150 linear feet of intermittent channel will be enhanced using in-stream natural channel design methods.

Service Area: This Mitigation Bank will be established to provide mitigation to compensate for impacts to waters of the United States, including wetlands, within the State of Arkansas. This area is demarcated by the United States Geologic Survey as hydrologic unit code 11140203 within the Loggy Bayou Watershed which includes portions of Nevada, Lafayette, and Columbia Counties, Arkansas. The HUC 11140203 will serve as the Big Creek Mitigation Bank's primary service area, while HUC 08040201 and 08040103 are proposed as secondary service areas. Decisions authorizing the use of credits from the Big Creek Mitigation Bank would be made by the appropriate authority on a case by case basis, in accordance with all applicable requirements.

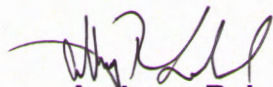
The prospectus, which outlines the conceptual plan for the bank, is available at the following website:

<http://www.mvk.usace.army.mil/Missions/Regulatory/PublicNotices.aspx>

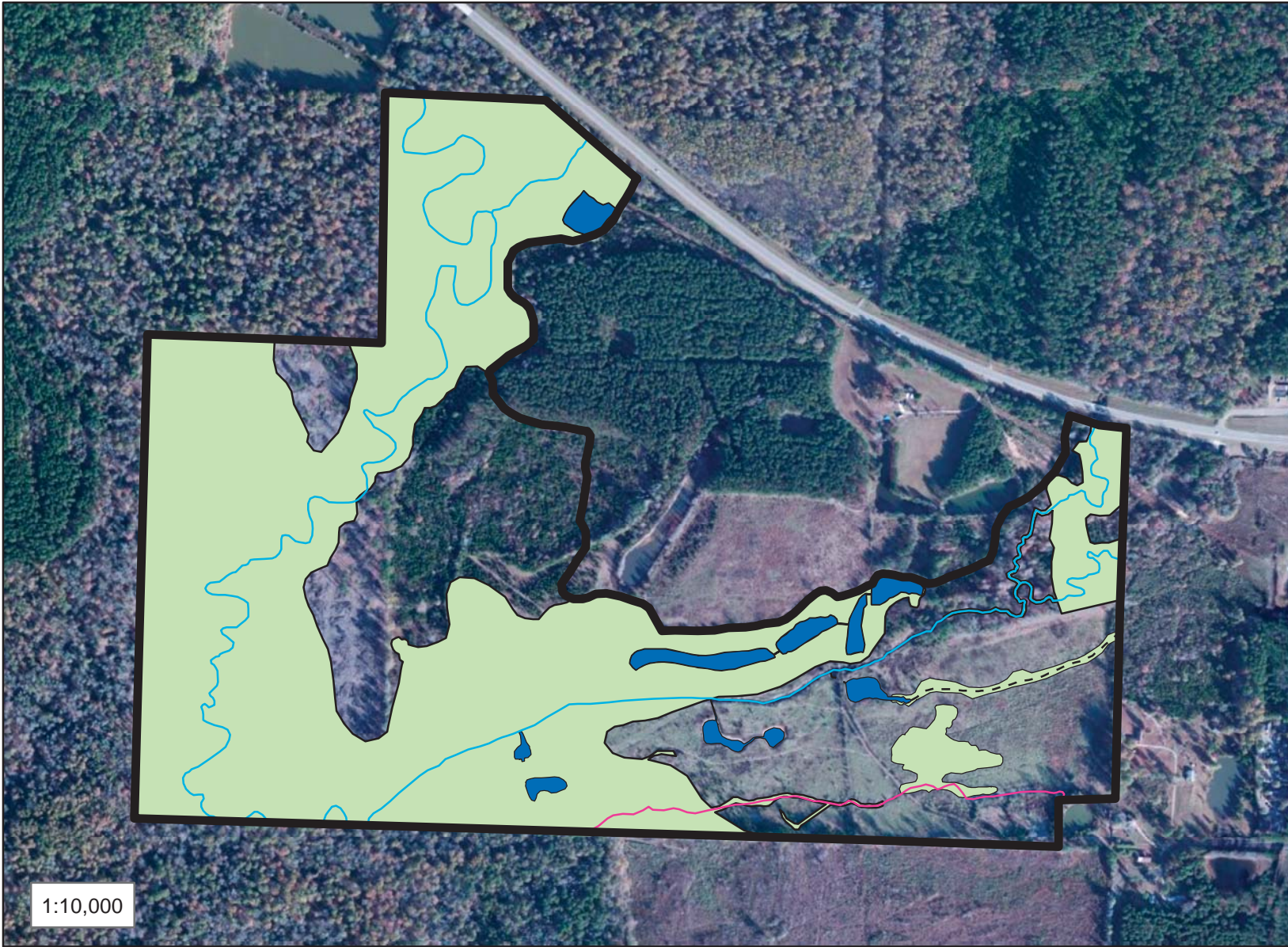
Comments on this proposed mitigation bank may be provided to the Corps at the address below. Comments should be received no later than the expiration date of this public notice.

Please provide comments to:

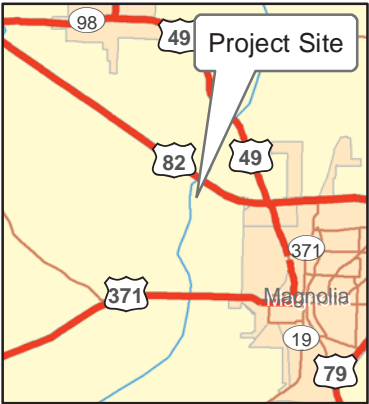
U.S. Army Corps of Engineers
Vicksburg District
Attention: CEMVK-OD-F
4155 Clay Street
Vicksburg, Mississippi 39183-3485



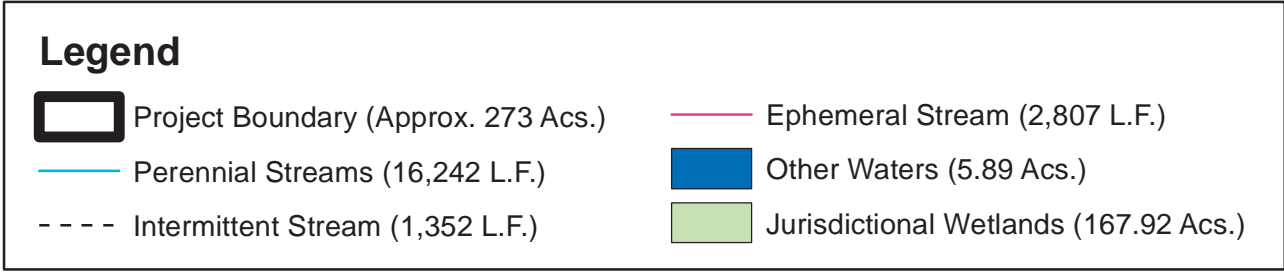


Anthony R. Lobred
Acting Chief, Evaluation Section
Regulatory Branch



30 December 2014
MVK-2012-632
 Jurisdictional Determination
 Big Creek Mitigation Bank
 Mr. Steve Whitehead
 Columbia County, Arkansas
**Preliminary
 Jurisdictional Determination**
 Prepared by
 Arel Simpson



There are jurisdictional waters of the U.S. within the project boundary. A permit is required for any work activities that involve the discharge of dredged or fill material into a jurisdictional water of the U.S.

**US Army Corps
of Engineers®**

Regulatory Branch
Enforcement Section




0 230 460 920 Feet

Enclosure 1

Big Creek Mitigation Bank

General Location Map, Columbia County, Magnolia Arkansas

Legend

-  Big Creek Mitigation Bank
-  Big Creek, Barlow Creek
-  Magnolia, AR



CEMVK-OD-FE KWH-MVK-2012-632

Whitehead Forestry Services, Inc.



H&T Environmental, Inc.
P.O. Box 239
Elysian Fields, TX 75642
903-633-8224—Office
903-633-8244—Fax
htenvironmental@eastex.net



Big Creek Mitigation Bank
Aerial Map with proposed bank boundaries
Columbia County, Arkansas

Figure 3

CEMVK-OD-FE KWH-MVK-2012-632

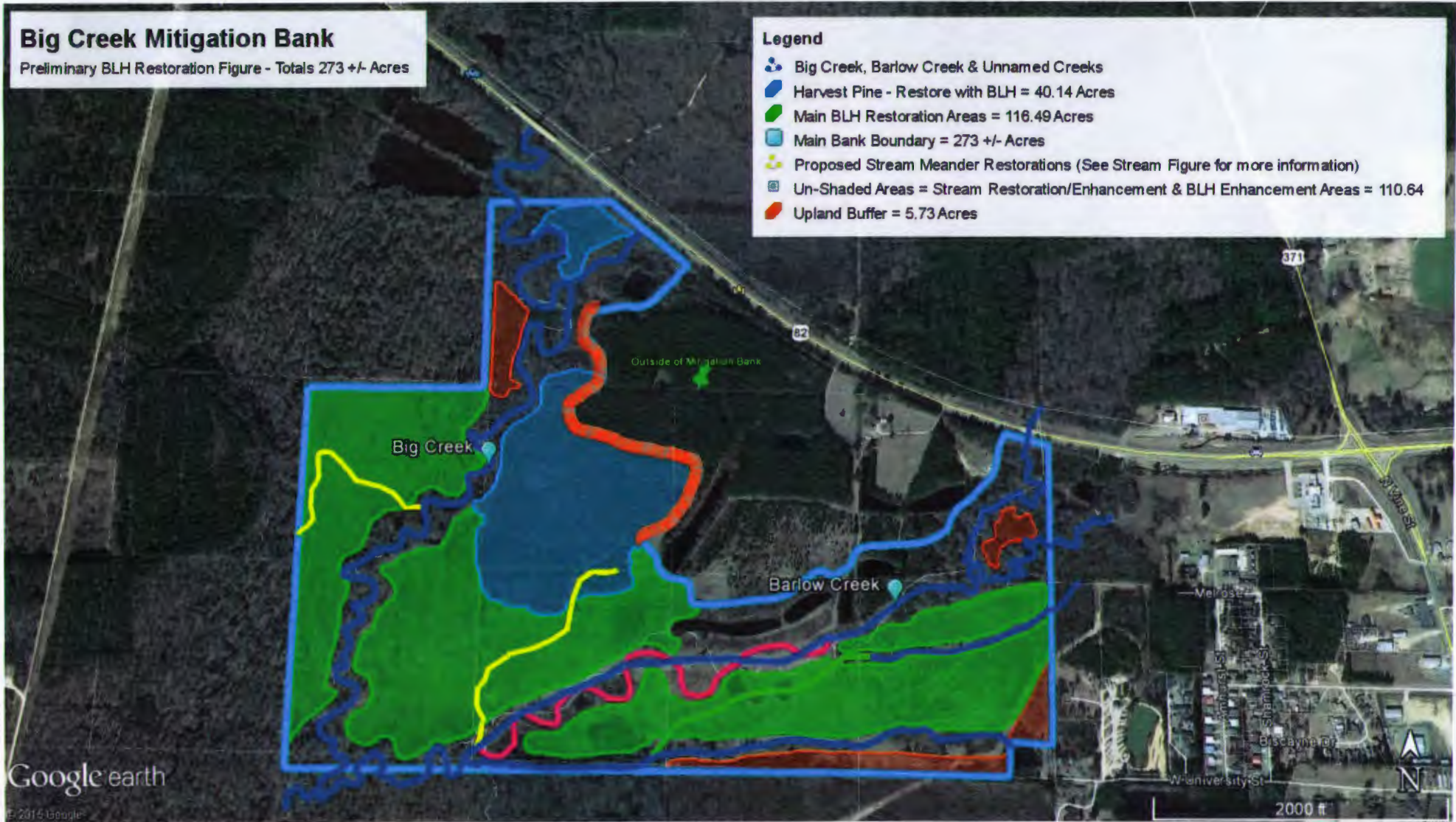
Whitehead Forestry Services, Inc.

Big Creek Mitigation Bank

Preliminary BLH Restoration Figure - Totals 273 +/- Acres

Legend

- Big Creek, Barlow Creek & Unnamed Creeks
- Harvest Pine - Restore with BLH = 40.14 Acres
- Main BLH Restoration Areas = 116.49 Acres
- Main Bank Boundary = 273 +/- Acres
- Proposed Stream Meander Restorations (See Stream Figure for more information)
- Un-Shaded Areas = Stream Restoration/Enhancement & BLH Enhancement Areas = 110.64
- Upland Buffer = 5.73 Acres



H&T Environmental, Inc.
 P.O. Box 239
 Elysian Fields, TX 75642
 903-633-8224—Office
 903-633-8244—Fax
 htenvironmental@eastex.net

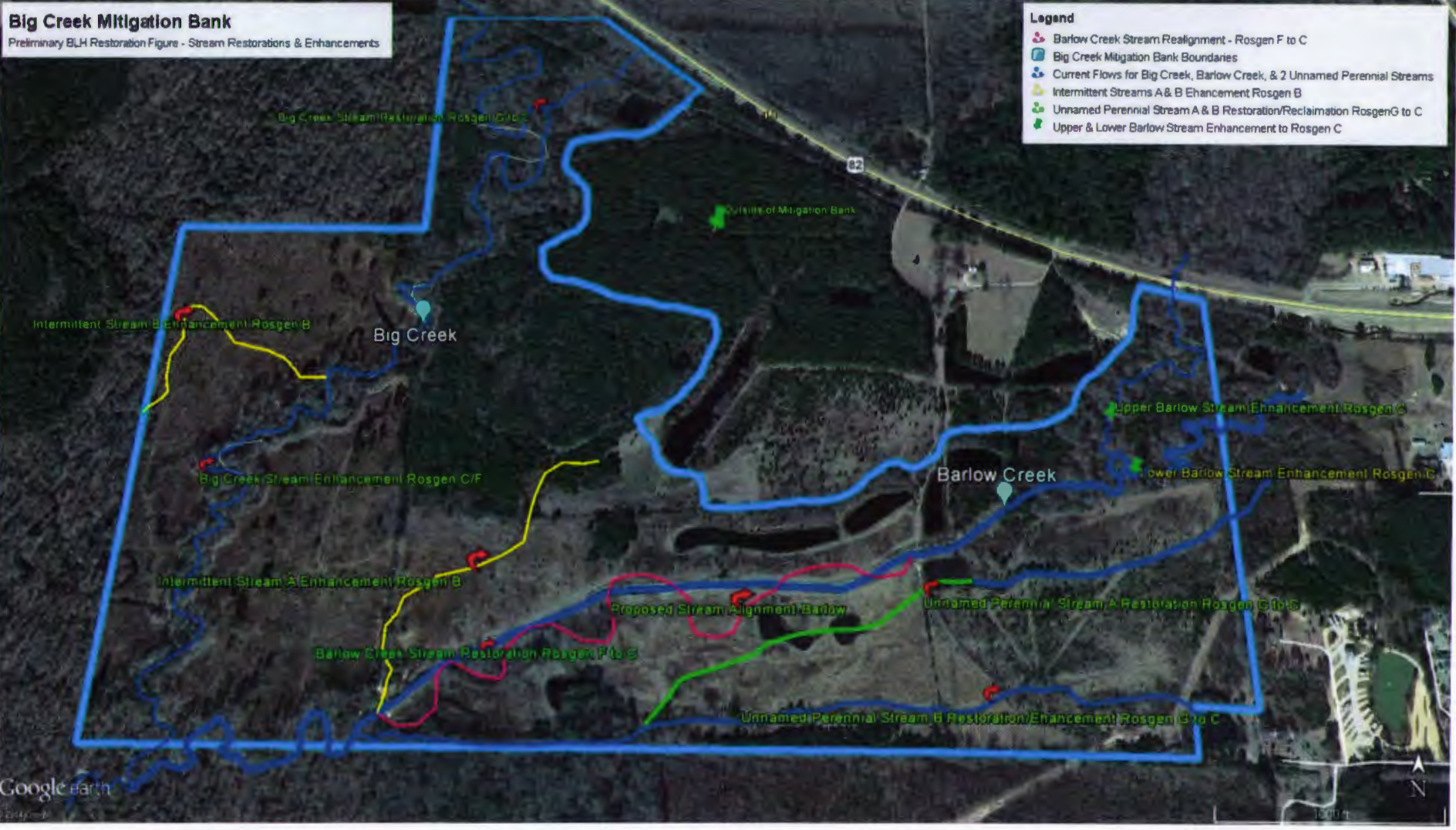


Big Creek Mitigation Bank
 Bottomland Hardwood Restoration Map
 Columbia County, Arkansas

Figure 4

CEMVK-OD-FE KWH-MVK-2012-632

Whitehead Forestry Services, Inc.



H&T Environmental, Inc.
P.O. Box 239
Elysian Fields, TX 75642
903-633-8224—Office
903-633-8244—Fax
htenvironmental@eastex.net



Big Creek Mitigation Bank
Stream Restoration & Enhancement Map
Columbia County, Arkansas

Figure 5

CEMVK-OD-FE KWH-MVK-2012-632

Whitehead Forestry Services, Inc.