



U.S. ARMY CORPS OF ENGINEERS
REGULATORY PROGRAM
APPROVED JURISDICTIONAL DETERMINATION FORM (INTERIM)
NAVIGABLE WATERS PROTECTION RULE

I. ADMINISTRATIVE INFORMATION

Completion Date of Approved Jurisdictional Determination (AJD): 24 Aug 2021

ORM Number: MVK-2021-00189-AEL

Associated JDs: N/A or ORM numbers and identifiers (e.g. HQS-2020-00001-MSW-MITSITE)

Review Area Location¹:

State/Territory: AR City: County/Parish/Borough: Saline County

Center Coordinates of Review Area: Latitude 34.52261 Longitude -92.468596

II. FINDINGS

A. Summary: Check all that apply. At least one box from the following list **MUST** be selected. Complete the corresponding sections/tables and summarize data sources.

- ☐ The review area is comprised entirely of dry land (i.e., there are no waters or water features, including wetlands, of any kind in the entire review area). Rationale: N/A or describe rationale.
- ☐ There are "navigable waters of the United States" within Rivers and Harbors Act jurisdiction within the review area (complete table in section II.B).
- ☐ There are "waters of the United States" within Clean Water Act jurisdiction within the review area (complete appropriate tables in section II.C).
- ☒ There are waters or water features excluded from Clean Water Act jurisdiction within the review area (complete table in section II.D).

B. Rivers and Harbors Act of 1899 Section 10 (§ 10)²

§ 10 Name	§ 10 Size	§ 10 Criteria	Rationale for § 10 Determination
N/A	N/A	N/A	N/A

C. Clean Water Act Section 404

Territorial Seas and Traditional Navigable Waters ((a)(1) waters)³

(a)(1) Name	(a)(1) Size	(a)(1) Criteria	Rationale for (a)(1) Determination
N/A	N/A	N/A	N/A

Tributaries ((a)(2) waters):

(a)(2) Name	(a)(2) Size	(a)(2) Criteria	Rationale for (a)(2) Determination
N/A	N/A	N/A	N/A

Lakes and ponds, and impoundments of jurisdictional waters ((a)(3) waters):

(a)(3) Name	(a)(3) Size	(a)(3) Criteria	Rationale for (a)(3) Determination
N/A	N/A	N/A	N/A

Adjacent wetlands ((a)(4) waters):

(a)(4) Name	(a)(4) Size	(a)(4) Criteria	Rationale for (a)(4) Determination
N/A	N/A	N/A	N/A

¹ Map(s)/Figure(s) are attached to the AJD provided to the requestor.

² If the navigable water is not subject to the ebb and flow of the tide or included on the District's list of Rivers and Harbors Act Section 10 navigable waters list, do NOT use this document to make the determination. The District must continue to follow the procedure outlined in 33 CFR part 329.14 to make a Rivers and Harbors Act Section 10 navigability determination.

³ A stand-alone TNW determination is completed independently of a request for an AJD. A stand-alone TNW determination is conducted for a specific segment of river or stream or other type of waterbody, such as a lake, where independent upstream or downstream limits or lake borders are established. A stand-alone TNW determination should be completed following applicable guidance and should NOT be documented on the AJD form.

⁴ Some excluded waters, such as (b)(2) and (b)(4), may not be specifically identified on the AJD form unless a requestor specifically asks a Corps district to do so. Corps Districts may, in case-by-case instances, choose to identify some or all of these waters within the review area.

⁵ Because of the broad nature of the (b)(1) exclusion and in an effort to collect data on specific types of waters that would be covered by the (b)(1) exclusion, four sub-categories of (b)(1) exclusions were administratively created for the purposes of the AJD Form. These four sub-categories are not new exclusions, but are simply administrative distinctions and remain (b)(1) exclusions as defined by the NWPR.



U.S. ARMY CORPS OF ENGINEERS
REGULATORY PROGRAM
APPROVED JURISDICTIONAL DETERMINATION FORM (INTERIM)
NAVIGABLE WATERS PROTECTION RULE

D. Excluded Waters or Features

Excluded waters ((b)(1) – (b)(12))⁴:

Exclusion Name	Exclusion Size	Exclusion ⁵	Rationale for Exclusion Determination
P-1	0.2 acres	(b)(1) Lake/pond or impoundment that does not contribute surface water flow directly or indirectly to an (a)(1) water and is not inundated by flooding from an (a)(1)-(a)(3) water in a typical year	
P-2	0.1 acres	(b)(1) Lake/pond or impoundment that does not contribute surface water flow directly or indirectly to an (a)(1) water and is not inundated by flooding from an (a)(1)-(a)(3) water in a typical year	
P-3	0.1 acres	(b)(1) Lake/pond or impoundment that does not contribute surface water flow directly or indirectly to an (a)(1) water and is not inundated by flooding from an (a)(1)-(a)(3) water in a typical year	
S-1	132.449 feet	(b)(3) Ephemeral feature, including an ephemeral stream, swale, gully, rill, or pool	
S-10	244.544 feet	(b)(3) Ephemeral feature, including an ephemeral stream, swale, gully, rill, or pool	
S-11	107.777 feet	(b)(3) Ephemeral feature, including an ephemeral stream, swale, gully, rill, or pool	
S-13	61.653 feet	(b)(3) Ephemeral feature, including an ephemeral stream, swale, gully, rill, or pool	
S-15	43.555 feet	(b)(3) Ephemeral feature, including an ephemeral stream, swale, gully, rill, or pool	
S-16	84.12 feet	(b)(3) Ephemeral feature, including an ephemeral stream, swale, gully, rill, or pool	
S-17	129.899 feet	(b)(3) Ephemeral feature, including an ephemeral stream, swale, gully, rill, or pool	
S-18	188.353 feet	(b)(3) Ephemeral feature, including an ephemeral stream, swale, gully, rill, or pool	
S-19	112.431 feet	(b)(3) Ephemeral feature, including an ephemeral stream, swale, gully, rill, or pool	
S-20	48.795 feet	(b)(3) Ephemeral feature, including an ephemeral stream, swale, gully,	

¹ Map(s)/Figure(s) are attached to the AJD provided to the requestor.

² If the navigable water is not subject to the ebb and flow of the tide or included on the District's list of Rivers and Harbors Act Section 10 navigable waters list, do NOT use this document to make the determination. The District must continue to follow the procedure outlined in 33 CFR part 329.14 to make a Rivers and Harbors Act Section 10 navigability determination.

³ A stand-alone TNW determination is completed independently of a request for an AJD. A stand-alone TNW determination is conducted for a specific segment of river or stream or other type of waterbody, such as a lake, where independent upstream or downstream limits or lake borders are established. A stand-alone TNW determination should be completed following applicable guidance and should NOT be documented on the AJD form.

⁴ Some excluded waters, such as (b)(2) and (b)(4), may not be specifically identified on the AJD form unless a requestor specifically asks a Corps district to do so. Corps Districts may, in case-by-case instances, choose to identify some or all of these waters within the review area.

⁵ Because of the broad nature of the (b)(1) exclusion and in an effort to collect data on specific types of waters that would be covered by the (b)(1) exclusion, four sub-categories of (b)(1) exclusions were administratively created for the purposes of the AJD Form. These four sub-categories are not new exclusions, but are simply administrative distinctions and remain (b)(1) exclusions as defined by the NWPR.



U.S. ARMY CORPS OF ENGINEERS
REGULATORY PROGRAM
APPROVED JURISDICTIONAL DETERMINATION FORM (INTERIM)
NAVIGABLE WATERS PROTECTION RULE

		rill, or pool	
S-24	244.393 feet	(b)(3) Ephemeral feature, including an ephemeral stream, swale, gully, rill, or pool	
S-25	116.845 feet	(b)(3) Ephemeral feature, including an ephemeral stream, swale, gully, rill, or pool	
S-29	118.444 feet	(b)(3) Ephemeral feature, including an ephemeral stream, swale, gully, rill, or pool	
S-3	69.448 feet	(b)(3) Ephemeral feature, including an ephemeral stream, swale, gully, rill, or pool	
S-30	167.258 feet	(b)(3) Ephemeral feature, including an ephemeral stream, swale, gully, rill, or pool	
S-31	248.077 feet	(b)(3) Ephemeral feature, including an ephemeral stream, swale, gully, rill, or pool	
S-32	110.434 feet	(b)(3) Ephemeral feature, including an ephemeral stream, swale, gully, rill, or pool	
S-33	100.552 feet	(b)(3) Ephemeral feature, including an ephemeral stream, swale, gully, rill, or pool	
S-34	307.771 feet	(b)(3) Ephemeral feature, including an ephemeral stream, swale, gully, rill, or pool	
S-36	24.557 feet	(b)(3) Ephemeral feature, including an ephemeral stream, swale, gully, rill, or pool	
S-5	26.148 feet	(b)(3) Ephemeral feature, including an ephemeral stream, swale, gully, rill, or pool	
S-6	191.838 feet	(b)(3) Ephemeral feature, including an ephemeral stream, swale, gully, rill, or pool	
S-7	12.36 feet	(b)(3) Ephemeral feature, including an ephemeral stream, swale, gully, rill, or pool	
S-8	101.482 feet	(b)(3) Ephemeral feature, including an ephemeral stream, swale, gully, rill, or pool	
W-1	0.03 acres	(b)(1) Non-adjacent wetland	
W-10	0.03 acres	(b)(1) Non-adjacent wetland	
W-11	0.02 acres	(b)(1) Non-adjacent wetland	
W-14	0.06 acres	(b)(1) Non-adjacent wetland	
W-15	0.04 acres	(b)(1) Non-adjacent wetland	
W-18	0.95 acres	(b)(1) Non-adjacent wetland	
W-2	0.07 acres	(b)(1) Non-adjacent wetland	
W-3	0.003 acres	(b)(1) Non-adjacent wetland	

¹ Map(s)/Figure(s) are attached to the AJD provided to the requestor.

² If the navigable water is not subject to the ebb and flow of the tide or included on the District's list of Rivers and Harbors Act Section 10 navigable waters list, do NOT use this document to make the determination. The District must continue to follow the procedure outlined in 33 CFR part 329.14 to make a Rivers and Harbors Act Section 10 navigability determination.

³ A stand-alone TNW determination is completed independently of a request for an AJD. A stand-alone TNW determination is conducted for a specific segment of river or stream or other type of waterbody, such as a lake, where independent upstream or downstream limits or lake borders are established. A stand-alone TNW determination should be completed following applicable guidance and should NOT be documented on the AJD form.

⁴ Some excluded waters, such as (b)(2) and (b)(4), may not be specifically identified on the AJD form unless a requestor specifically asks a Corps district to do so. Corps Districts may, in case-by-case instances, choose to identify some or all of these waters within the review area.

⁵ Because of the broad nature of the (b)(1) exclusion and in an effort to collect data on specific types of waters that would be covered by the (b)(1) exclusion, four sub-categories of (b)(1) exclusions were administratively created for the purposes of the AJD Form. These four sub-categories are not new exclusions, but are simply administrative distinctions and remain (b)(1) exclusions as defined by the NWPR.



U.S. ARMY CORPS OF ENGINEERS
REGULATORY PROGRAM
APPROVED JURISDICTIONAL DETERMINATION FORM (INTERIM)
NAVIGABLE WATERS PROTECTION RULE

W-6	0.1 acres	(b)(1) Non-adjacent wetland	
W-7	0.11 acres	(b)(1) Non-adjacent wetland	
W-8	0.19 acres	(b)(1) Non-adjacent wetland	
W-9	0.03 acres	(b)(1) Non-adjacent wetland	

III. SUPPORTING INFORMATION

A. Select/enter all resources that were used to aid in this determination and attach data/maps to this document and/or references/citations in the administrative record, as appropriate.

- ☒ Information submitted by, or on behalf of, the applicant/consultant: *Title(s) and date(s)*.
This information (*is/is not/is and is not*) sufficient for purposes of this AJD.
Rationale: *N/A or describe rationale for insufficiency (including partial insufficiency)*.
- ☐ Data sheets prepared by the Corps: *Title(s) and/or date(s)*.
- ☒ Photographs: (*NA, aerial, other, aerial and other*) *Title(s) and/or date(s)*.
- ☐ Corps Site visit(s) conducted on: *Date(s)*.
- ☐ Previous Jurisdictional Determinations (AJDs or PJDs): *ORM Number(s) and date(s)*.
- ☐ Antecedent Precipitation Tool: *provide detailed discussion in Section III.B.*
- ☐ USDA NRCS Soil Survey: *Title(s) and/or date(s)*.
- ☒ USFWS NWI maps: *Title(s) and/or date(s)*.
- ☒ USGS topographic maps: *Title(s) and/or date(s)*.

Other data sources used to aid in this determination:

Data Source (select)	Name and/or date and other relevant information
USGS Sources	N/A.
USDA Sources	N/A.
NOAA Sources	N/A.
USACE Sources	N/A.
State/Local/Tribal Sources	N/A.
Other Sources	N/A.

B. Typical year assessment(s): N/A or provide typical year assessment for each relevant data source used to support the conclusions in the AJD.

C. Additional comments to support AJD: N/A or provide additional discussion as appropriate.

¹ Map(s)/Figure(s) are attached to the AJD provided to the requestor.

² If the navigable water is not subject to the ebb and flow of the tide or included on the District's list of Rivers and Harbors Act Section 10 navigable waters list, do NOT use this document to make the determination. The District must continue to follow the procedure outlined in 33 CFR part 329.14 to make a Rivers and Harbors Act Section 10 navigability determination.

³ A stand-alone TNW determination is completed independently of a request for an AJD. A stand-alone TNW determination is conducted for a specific segment of river or stream or other type of waterbody, such as a lake, where independent upstream or downstream limits or lake borders are established. A stand-alone TNW determination should be completed following applicable guidance and should NOT be documented on the AJD form.

⁴ Some excluded waters, such as (b)(2) and (b)(4), may not be specifically identified on the AJD form unless a requestor specifically asks a Corps district to do so. Corps Districts may, in case-by-case instances, choose to identify some or all of these waters within the review area.

⁵ Because of the broad nature of the (b)(1) exclusion and in an effort to collect data on specific types of waters that would be covered by the (b)(1) exclusion, four sub-categories of (b)(1) exclusions were administratively created for the purposes of the AJD Form. These four sub-categories are not new exclusions, but are simply administrative distinctions and remain (b)(1) exclusions as defined by the NWPR.



U.S. ARMY CORPS OF ENGINEERS
REGULATORY PROGRAM
APPROVED JURISDICTIONAL DETERMINATION FORM (INTERIM)
NAVIGABLE WATERS PROTECTION RULE

I. ADMINISTRATIVE INFORMATION

Completion Date of Approved Jurisdictional Determination (AJD): 12 Aug 2021

ORM Number: MVK-2021-00189-AEL

Associated JDs: N/A or ORM numbers and identifiers (e.g. HQS-2020-00001-MSW-MITSITE)

Review Area Location¹:

State/Territory: AR City: County/Parish/Borough: Saline County

Center Coordinates of Review Area: Latitude 34.52261 Longitude -92.468596

II. FINDINGS

A. Summary: Check all that apply. At least one box from the following list **MUST** be selected. Complete the corresponding sections/tables and summarize data sources.

- ☐ The review area is comprised entirely of dry land (i.e., there are no waters or water features, including wetlands, of any kind in the entire review area). Rationale: N/A or describe rationale.
- ☐ There are "navigable waters of the United States" within Rivers and Harbors Act jurisdiction within the review area (complete table in section II.B).
- ☐ There are "waters of the United States" within Clean Water Act jurisdiction within the review area (complete appropriate tables in section II.C).
- ☒ There are waters or water features excluded from Clean Water Act jurisdiction within the review area (complete table in section II.D).

B. Rivers and Harbors Act of 1899 Section 10 (§ 10)²

§ 10 Name	§ 10 Size	§ 10 Criteria	Rationale for § 10 Determination
N/A	N/A	N/A	N/A

C. Clean Water Act Section 404

Territorial Seas and Traditional Navigable Waters ((a)(1) waters)³

(a)(1) Name	(a)(1) Size	(a)(1) Criteria	Rationale for (a)(1) Determination
N/A	N/A	N/A	N/A

Tributaries ((a)(2) waters):

(a)(2) Name	(a)(2) Size	(a)(2) Criteria	Rationale for (a)(2) Determination
N/A	N/A	N/A	N/A

Lakes and ponds, and impoundments of jurisdictional waters ((a)(3) waters):

(a)(3) Name	(a)(3) Size	(a)(3) Criteria	Rationale for (a)(3) Determination
N/A	N/A	N/A	N/A

Adjacent wetlands ((a)(4) waters):

(a)(4) Name	(a)(4) Size	(a)(4) Criteria	Rationale for (a)(4) Determination
N/A	N/A	N/A	N/A

¹ Map(s)/Figure(s) are attached to the AJD provided to the requestor.

² If the navigable water is not subject to the ebb and flow of the tide or included on the District's list of Rivers and Harbors Act Section 10 navigable waters list, do NOT use this document to make the determination. The District must continue to follow the procedure outlined in 33 CFR part 329.14 to make a Rivers and Harbors Act Section 10 navigability determination.

³ A stand-alone TNW determination is completed independently of a request for an AJD. A stand-alone TNW determination is conducted for a specific segment of river or stream or other type of waterbody, such as a lake, where independent upstream or downstream limits or lake borders are established. A stand-alone TNW determination should be completed following applicable guidance and should NOT be documented on the AJD form.

⁴ Some excluded waters, such as (b)(2) and (b)(4), may not be specifically identified on the AJD form unless a requestor specifically asks a Corps district to do so. Corps Districts may, in case-by-case instances, choose to identify some or all of these waters within the review area.

⁵ Because of the broad nature of the (b)(1) exclusion and in an effort to collect data on specific types of waters that would be covered by the (b)(1) exclusion, four sub-categories of (b)(1) exclusions were administratively created for the purposes of the AJD Form. These four sub-categories are not new exclusions, but are simply administrative distinctions and remain (b)(1) exclusions as defined by the NWPR.



U.S. ARMY CORPS OF ENGINEERS
REGULATORY PROGRAM
APPROVED JURISDICTIONAL DETERMINATION FORM (INTERIM)
NAVIGABLE WATERS PROTECTION RULE

D. Excluded Waters or Features

Excluded waters ((b)(1) – (b)(12))⁴:

Exclusion Name	Exclusion Size	Exclusion ⁵	Rationale for Exclusion Determination
S-39	187 feet	(b)(3) Ephemeral feature, including an ephemeral stream, swale, gully, rill, or pool	
S-42	118 feet	(b)(3) Ephemeral feature, including an ephemeral stream, swale, gully, rill, or pool	
S-44	101 feet	(b)(3) Ephemeral feature, including an ephemeral stream, swale, gully, rill, or pool	
S-45	118 feet	(b)(3) Ephemeral feature, including an ephemeral stream, swale, gully, rill, or pool	
W-21	0.04 acres	(b)(1) Non-adjacent wetland	

III. SUPPORTING INFORMATION

A. Select/enter all resources that were used to aid in this determination and attach data/maps to this document and/or references/citations in the administrative record, as appropriate.

☒ Information submitted by, or on behalf of, the applicant/consultant: *Title(s) and date(s)*.

This information (*is/is not/is and is not*) sufficient for purposes of this AJD.

Rationale: *N/A or describe rationale for insufficiency (including partial insufficiency)*.

☐ Data sheets prepared by the Corps: *Title(s) and/or date(s)*.

☒ Photographs: (*NA, aerial, other, aerial and other*) *Title(s) and/or date(s)*.

☐ Corps Site visit(s) conducted on: *Date(s)*.

☐ Previous Jurisdictional Determinations (AJDs or PJDs): *ORM Number(s) and date(s)*.

☐ Antecedent Precipitation Tool: *provide detailed discussion in Section III.B.*

☐ USDA NRCS Soil Survey: *Title(s) and/or date(s)*.

☒ USFWS NWI maps: *Title(s) and/or date(s)*.

☒ USGS topographic maps: *Title(s) and/or date(s)*.

Other data sources used to aid in this determination:

Data Source (select)	Name and/or date and other relevant information
USGS Sources	N/A.
USDA Sources	N/A.
NOAA Sources	N/A.
USACE Sources	N/A.
State/Local/Tribal Sources	N/A.
Other Sources	N/A.

B. Typical year assessment(s): N/A or provide typical year assessment for each relevant data source used to support the conclusions in the AJD.

¹ Map(s)/Figure(s) are attached to the AJD provided to the requestor.

² If the navigable water is not subject to the ebb and flow of the tide or included on the District's list of Rivers and Harbors Act Section 10 navigable waters list, do NOT use this document to make the determination. The District must continue to follow the procedure outlined in 33 CFR part 329.14 to make a Rivers and Harbors Act Section 10 navigability determination.

³ A stand-alone TNW determination is completed independently of a request for an AJD. A stand-alone TNW determination is conducted for a specific segment of river or stream or other type of waterbody, such as a lake, where independent upstream or downstream limits or lake borders are established. A stand-alone TNW determination should be completed following applicable guidance and should NOT be documented on the AJD form.

⁴ Some excluded waters, such as (b)(2) and (b)(4), may not be specifically identified on the AJD form unless a requestor specifically asks a Corps district to do so. Corps Districts may, in case-by-case instances, choose to identify some or all of these waters within the review area.

⁵ Because of the broad nature of the (b)(1) exclusion and in an effort to collect data on specific types of waters that would be covered by the (b)(1) exclusion, four sub-categories of (b)(1) exclusions were administratively created for the purposes of the AJD Form. These four sub-categories are not new exclusions, but are simply administrative distinctions and remain (b)(1) exclusions as defined by the NWPR.



U.S. ARMY CORPS OF ENGINEERS
REGULATORY PROGRAM
APPROVED JURISDICTIONAL DETERMINATION FORM (INTERIM)
NAVIGABLE WATERS PROTECTION RULE

C. Additional comments to support AJD: N/A or provide additional discussion as appropriate.

¹ Map(s)/Figure(s) are attached to the AJD provided to the requestor.

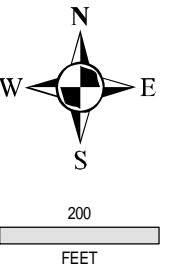
² If the navigable water is not subject to the ebb and flow of the tide or included on the District's list of Rivers and Harbors Act Section 10 navigable waters list, do NOT use this document to make the determination. The District must continue to follow the procedure outlined in 33 CFR part 329.14 to make a Rivers and Harbors Act Section 10 navigability determination.

³ A stand-alone TNW determination is completed independently of a request for an AJD. A stand-alone TNW determination is conducted for a specific segment of river or stream or other type of waterbody, such as a lake, where independent upstream or downstream limits or lake borders are established. A stand-alone TNW determination should be completed following applicable guidance and should NOT be documented on the AJD form.

⁴ Some excluded waters, such as (b)(2) and (b)(4), may not be specifically identified on the AJD form unless a requestor specifically asks a Corps district to do so. Corps Districts may, in case-by-case instances, choose to identify some or all of these waters within the review area.

⁵ Because of the broad nature of the (b)(1) exclusion and in an effort to collect data on specific types of waters that would be covered by the (b)(1) exclusion, four sub-categories of (b)(1) exclusions were administratively created for the purposes of the AJD Form. These four sub-categories are not new exclusions, but are simply administrative distinctions and remain (b)(1) exclusions as defined by the NWPR.

W-1, S-1, W-2 considered non-jurisdictional per the NWPR.
AJD completed by Bryan Williamson
See ORM2 DD Summary for "waters type" designation.



W-1
Number of Poles in Wetland: 0
Fill Volume (cubic yards): 0
Area Filled (squared feet): 0
Total Forested Area Cleared (acres): 0.03

W-2
Number of Poles in Wetland: 0
Fill Volume (cubic yards): 0
Area Filled (squared feet): 0
Total Forested Area Cleared (acres): 0.07

20 ft Culvert(s)

- STREAM POINTS
- WETLAND DETERMINATION POINTS
- STREAMS
- TRANSMISSION LINE
- ROW
- PONDS
- WETLAND (PRESUMED NON-JURISDICTIONAL)
- WETLAND (PRESUMED JURISDICTIONAL)

NO	DATE	REVISION	BY	CK.	APPR.

DESIGNED BY	SJH
CHECKED BY	SJH
APPR. BY	SJH
DRAWN BY	IT

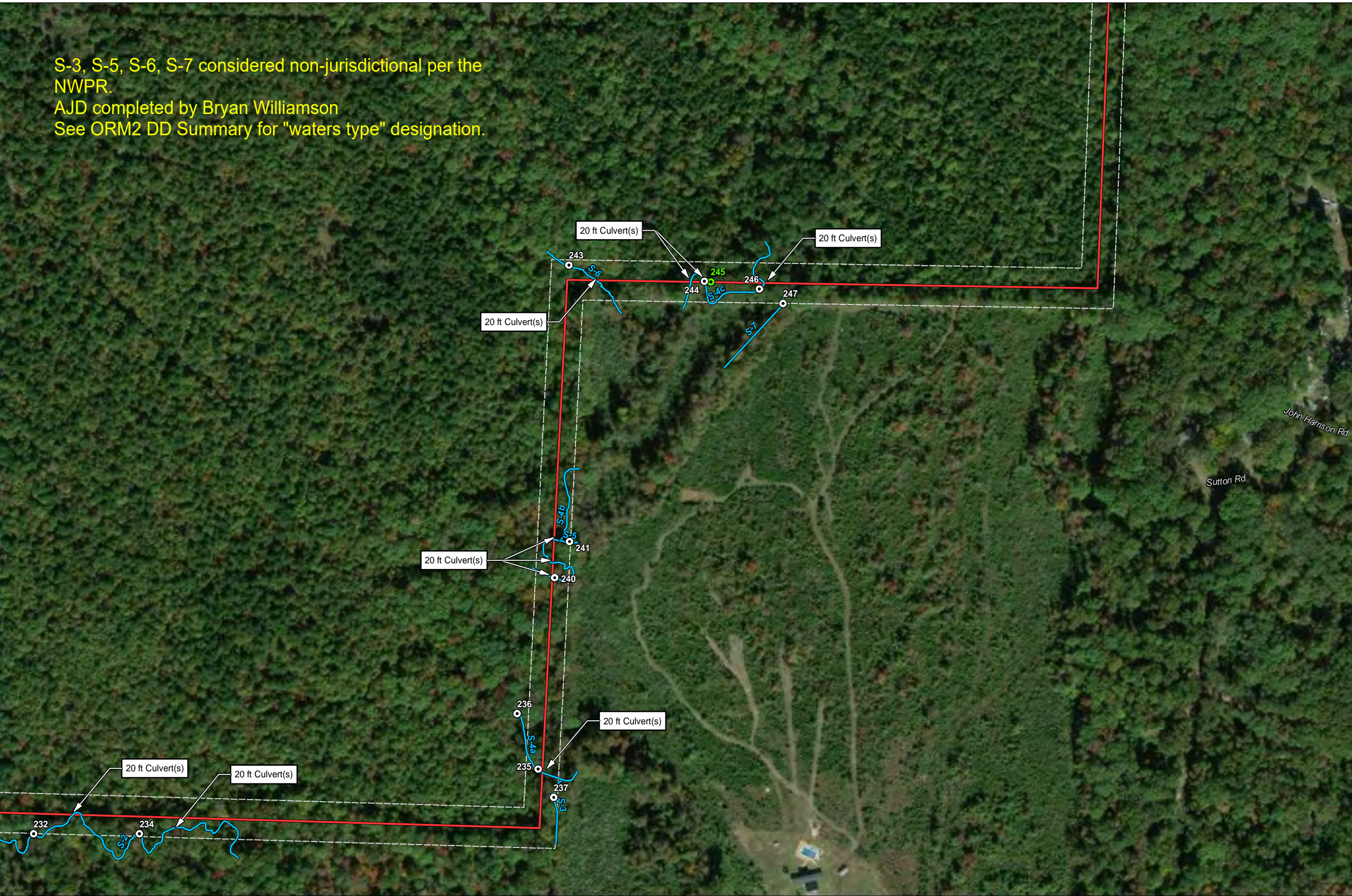
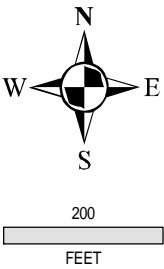


SHEET TITLE	AERIAL SITE MAP
-------------	--------------------

JOB NAME	SHAW TO SARDIS SOUTH TRANSMISSION LINE ARKANSAS ELECTRIC COOPERATIVE CORPORATION SALINE COUNTY, ARKANSAS
----------	---

PROJECT NO.	3008-18-302	REV. NO.	
DATE	01/04/2021		
SCALE	SHOWN	DWG. NO.	S2

S-3, S-5, S-6, S-7 considered non-jurisdictional per the NWPR.
AJD completed by Bryan Williamson
See ORM2 DD Summary for "waters type" designation.



- STREAM POINTS
- WETLAND DETERMINATION POINTS
- STREAMS
- TRANSMISSION LINE
- - - ROW
- PONDS
- WETLAND (PRESUMED NON-JURISDICTIONAL)
- WETLAND (PRESUMED JURISDICTIONAL)

NO	DATE	REVISION	BY	CK.	APPR.

DESIGNED BY SJH
CHECKED BY SJH
APPR. BY SJH
DRAWN BY IT



SHEET TITLE

AERIAL
SITE MAP

JOB NAME

SHAW TO SARDIS SOUTH
TRANSMISSION LINE
ARKANSAS ELECTRIC COOPERATIVE CORPORATION
SALINE COUNTY, ARKANSAS

PROJECT NO.

3008-18-302

DATE

01/04/2021

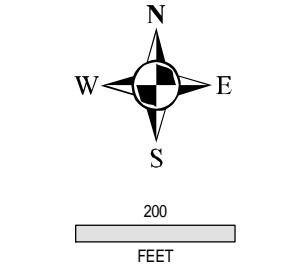
SCALE

SHOWN

REV. NO.

DWG. NO.

S3



- STREAM POINTS
- WETLAND DETERMINATION POINTS
- STREAMS
- TRANSMISSION LINE
- - - ROW
- PONDS
- ▨ WETLAND (PRESUMED NON-JURISDICTIONAL)
- ▨ WETLAND (PRESUMED JURISDICTIONAL)

NO	DATE	REVISION	BY	CK.	APPR.

DESIGNED BY SJH
CHECKED BY SJH
APPR. BY SJH
DRAWN BY IT



SHEET TITLE

AERIAL
SITE MAP

JOB NAME

SHAW TO SARDIS SOUTH
TRANSMISSION LINE
ARKANSAS ELECTRIC COOPERATIVE CORPORATION
SALINE COUNTY, ARKANSAS

PROJECT NO.

3008-18-302

DATE

01/04/2021

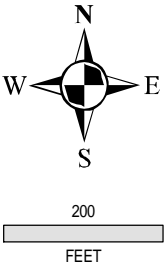
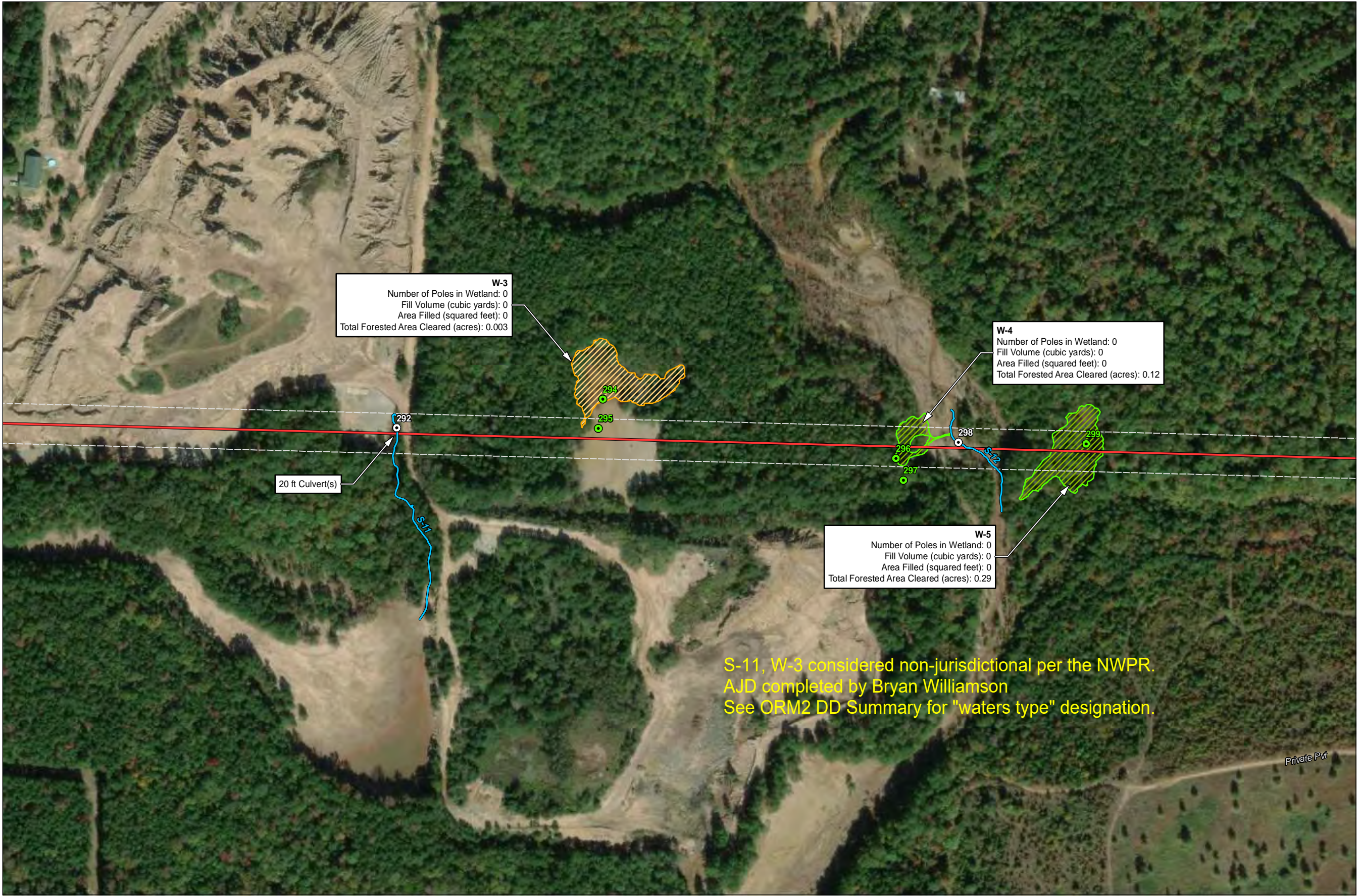
SCALE

SHOWN

REV. NO.

DWG. NO.

S4



W-3
Number of Poles in Wetland: 0
Fill Volume (cubic yards): 0
Area Filled (squared feet): 0
Total Forested Area Cleared (acres): 0.003

W-4
Number of Poles in Wetland: 0
Fill Volume (cubic yards): 0
Area Filled (squared feet): 0
Total Forested Area Cleared (acres): 0.12

W-5
Number of Poles in Wetland: 0
Fill Volume (cubic yards): 0
Area Filled (squared feet): 0
Total Forested Area Cleared (acres): 0.29

20 ft Culvert(s)

S-11, W-3 considered non-jurisdictional per the NWPR.
AJD completed by Bryan Williamson
See ORM2 DD Summary for "waters type" designation.

- STREAM POINTS
- WETLAND DETERMINATION POINTS
- STREAMS
- TRANSMISSION LINE
- ROW
- PONDS
- WETLAND (PRESUMED NON-JURISDICTIONAL)
- WETLAND (PRESUMED JURISDICTIONAL)

NO	DATE	REVISION	BY	CK.	APPR.

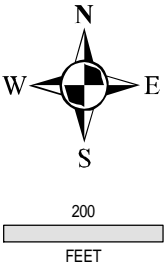
DESIGNED BY	SJH
CHECKED BY	SJH
APPR. BY	SJH
DRAWN BY	IT



SHEET TITLE	AERIAL SITE MAP
-------------	--------------------

JOB NAME	SHAW TO SARDIS SOUTH TRANSMISSION LINE ARKANSAS ELECTRIC COOPERATIVE CORPORATION SALINE COUNTY, ARKANSAS
----------	---

PROJECT NO.	3008-18-302	REV. NO.	
DATE	01/04/2021		
SCALE	SHOWN	DWG. NO.	S5



P-1 considered non-jurisdictional per the NWPR.
AJD completed by Bryan Williamson
See ORM2 DD Summary for "waters type" designation.

- STREAM POINTS
- WETLAND DETERMINATION POINTS
- STREAMS
- TRANSMISSION LINE
- ROW
- PONDS
- ▨ WETLAND (PRESUMED NON-JURISDICTIONAL)
- ▨ WETLAND (PRESUMED JURISDICTIONAL)

NO	DATE	REVISION	BY	CK.	APPR.

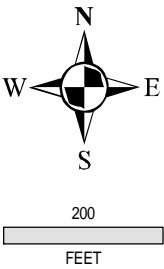
DESIGNED BY	SJH
CHECKED BY	SJH
APPR. BY	SJH
DRAWN BY	IT



SHEET TITLE
AERIAL SITE MAP

JOB NAME
SHAW TO SARDIS SOUTH TRANSMISSION LINE ARKANSAS ELECTRIC COOPERATIVE CORPORATION SALINE COUNTY, ARKANSAS

PROJECT NO.	3008-18-302	REV. NO.
DATE	01/04/2021	
SCALE	SHOWN	DWG. NO.
		S6



W-6
Number of Poles in Wetland: 0
Fill Volume (cubic yards): 0
Area Filled (squared feet): 0
Total Forested Area Cleared (acres): 0

- STREAM POINTS
- WETLAND DETERMINATION POINTS
- STREAMS
- TRANSMISSION LINE
- - - ROW
- PONDS
- ▨ WETLAND (PRESUMED NON-JURISDICTIONAL)
- ▨ WETLAND (PRESUMED JURISDICTIONAL)

NO	DATE	REVISION	BY	CK.	APPR.

DESIGNED BY	SJH
CHECKED BY	SJH
APPR. BY	SJH
DRAWN BY	IT



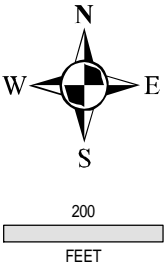
SHEET TITLE

AERIAL
SITE MAP

JOB NAME

SHAW TO SARDIS SOUTH
TRANSMISSION LINE
ARKANSAS ELECTRIC COOPERATIVE CORPORATION
SALINE COUNTY, ARKANSAS

PROJECT NO.	3008-18-302	REV. NO.	
DATE	01/04/2021		
SCALE	SHOWN	DWG. NO.	S7



- STREAM POINTS
- WETLAND DETERMINATION POINTS
- STREAMS
- TRANSMISSION LINE
- - - ROW
- PONDS
- WETLAND (PRESUMED NON-JURISDICTIONAL)
- WETLAND (PRESUMED JURISDICTIONAL)

NO	DATE	REVISION	BY	CK.	APPR.

DESIGNED BY	SJH
CHECKED BY	SJH
APPR. BY	SJH
DRAWN BY	IT



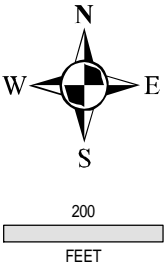
SHEET TITLE

AERIAL
SITE MAP

JOB NAME

SHAW TO SARDIS SOUTH
TRANSMISSION LINE
ARKANSAS ELECTRIC COOPERATIVE CORPORATION
SALINE COUNTY, ARKANSAS

PROJECT NO.	3008-18-302	REV. NO.	
DATE	01/04/2021		
SCALE	SHOWN	DWG. NO.	S8



- STREAM POINTS
- WETLAND DETERMINATION POINTS
- STREAMS
- TRANSMISSION LINE
- ROW
- PONDS
- ▨ WETLAND (PRESUMED NON-JURISDICTIONAL)
- ▨ WETLAND (PRESUMED JURISDICTIONAL)

NO	DATE	REVISION	BY	CK.	APPR.

DESIGNED BY SJH
CHECKED BY SJH
APPR. BY SJH
DRAWN BY IT



SHEET TITLE

AERIAL
SITE MAP

JOB NAME

SHAW TO SARDIS SOUTH
TRANSMISSION LINE
ARKANSAS ELECTRIC COOPERATIVE CORPORATION
SALINE COUNTY, ARKANSAS

PROJECT NO.

3008-18-302

DATE

01/04/2021

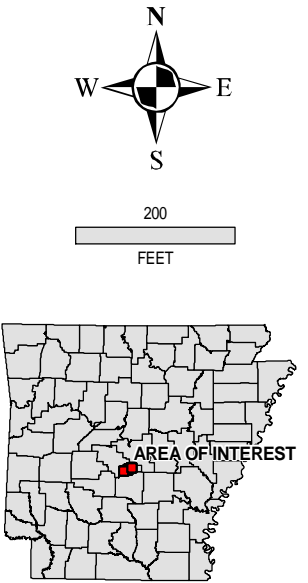
SCALE

SHOWN

REV. NO.

DWG. NO.

S9



- STREAM POINTS
- WETLAND DETERMINATION POINTS
- STREAMS
- TRANSMISSION LINE
- ROW
- PONDS
- ▨ WETLAND (PRESUMED NON-JURISDICTIONAL)
- ▨ WETLAND (PRESUMED JURISDICTIONAL)

NO	DATE	REVISION	BY	CK.	APPR.

DESIGNED BY	SJH
CHECKED BY	SJH
APPR. BY	SJH
DRAWN BY	IT



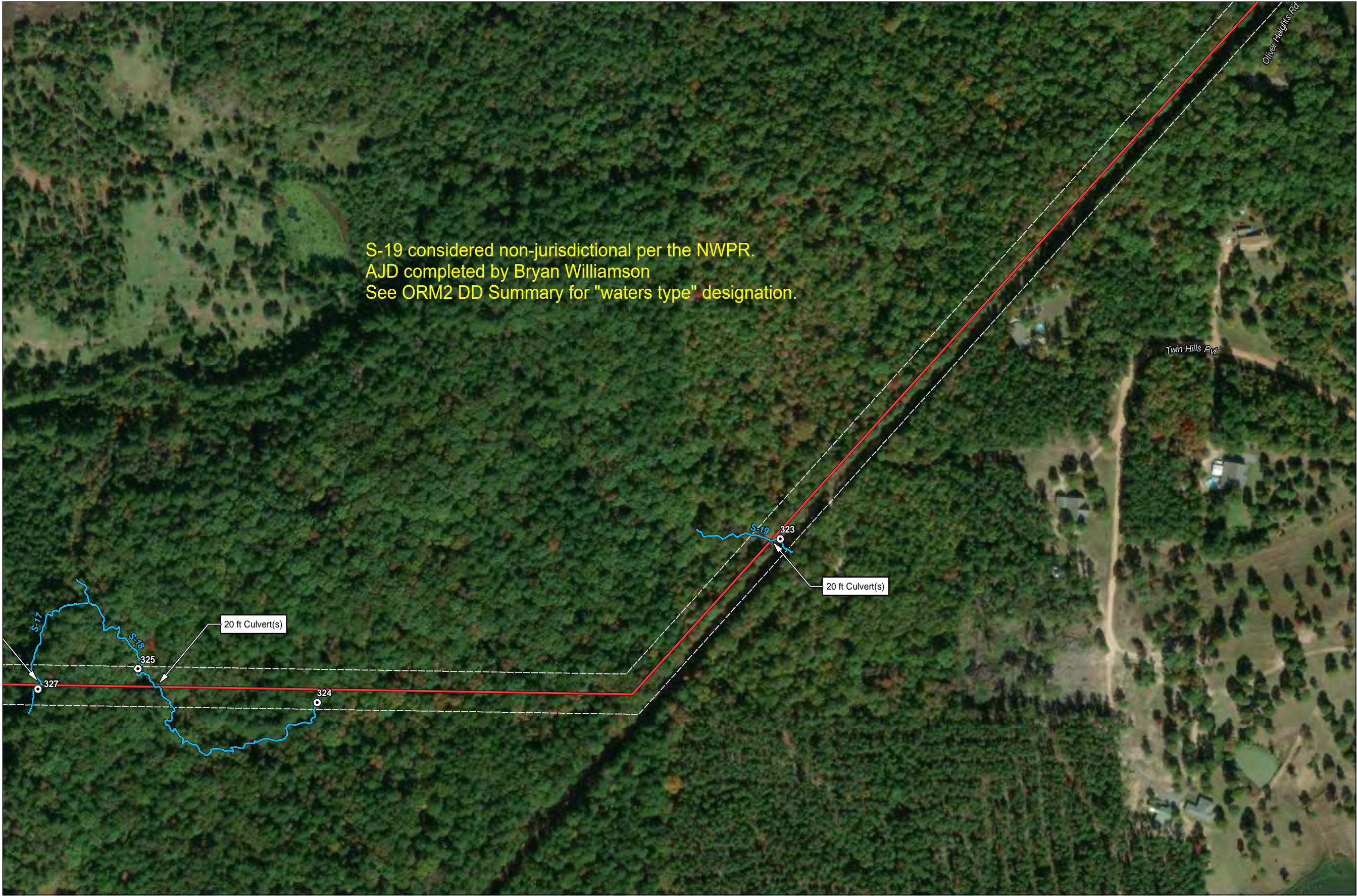
SHEET TITLE

AERIAL
SITE MAP

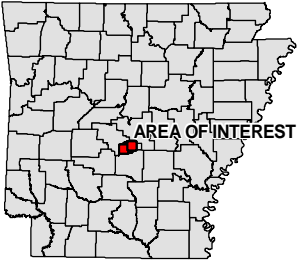
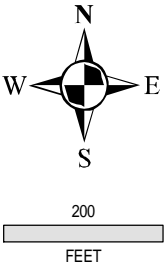
JOB NAME

SHAW TO SARDIS SOUTH
TRANSMISSION LINE
ARKANSAS ELECTRIC COOPERATIVE CORPORATION
SALINE COUNTY, ARKANSAS

PROJECT NO.	3008-18-302	REV. NO.	
DATE	01/04/2021		
SCALE	SHOWN	DWG. NO.	S10



S-19 considered non-jurisdictional per the NWPR.
AJD completed by Bryan Williamson
See ORM2 DD Summary for "waters type" designation.



- STREAM POINTS
- WETLAND DETERMINATION POINTS
- STREAMS
- TRANSMISSION LINE
- ROW
- PONDS
- WETLAND (PRESUMED NON-JURISDICTIONAL)
- WETLAND (PRESUMED JURISDICTIONAL)

NO	DATE	REVISION	BY	CK.	APPR.

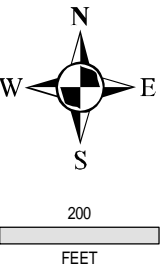
DESIGNED BY	SJH
CHECKED BY	SJH
APPR. BY	SJH
DRAWN BY	IT



SHEET TITLE	AERIAL SITE MAP
-------------	--------------------

JOB NAME	SHAW TO SARDIS SOUTH TRANSMISSION LINE ARKANSAS ELECTRIC COOPERATIVE CORPORATION SALINE COUNTY, ARKANSAS
----------	---

PROJECT NO.	3008-18-302	REV. NO.	
DATE	01/04/2021		
SCALE	SHOWN	DWG. NO.	S11



- STREAM POINTS
- WETLAND DETERMINATION POINTS
- STREAMS
- TRANSMISSION LINE
- ROW
- PONDS
- WETLAND (PRESUMED NON-JURISDICTIONAL)
- WETLAND (PRESUMED JURISDICTIONAL)

NO	DATE	REVISION	BY	CK.	APPR.

DESIGNED BY SJH
CHECKED BY SJH
APPR. BY SJH
DRAWN BY IT



SHEET TITLE

AERIAL
SITE MAP

JOB NAME

SHAW TO SARDIS SOUTH
TRANSMISSION LINE
ARKANSAS ELECTRIC COOPERATIVE CORPORATION
SALINE COUNTY, ARKANSAS

PROJECT NO.

3008-18-302

DATE

01/04/2021

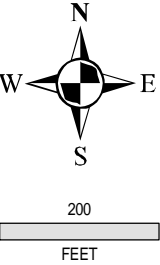
SCALE

SHOWN

REV. NO.

DWG. NO.

S12



- STREAM POINTS
- WETLAND DETERMINATION POINTS
- STREAMS
- TRANSMISSION LINE
- - - ROW
- PONDS
- WETLAND (PRESUMED NON-JURISDICTIONAL)
- WETLAND (PRESUMED JURISDICTIONAL)

NO	DATE	REVISION	BY	CK.	APPR.

DESIGNED BY SJH
CHECKED BY SJH
APPR. BY SJH
DRAWN BY IT



SHEET TITLE

AERIAL
SITE MAP

JOB NAME

SHAW TO SARDIS SOUTH
TRANSMISSION LINE
ARKANSAS ELECTRIC COOPERATIVE CORPORATION
SALINE COUNTY, ARKANSAS

PROJECT NO.

3008-18-302

DATE

01/04/2021

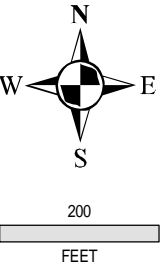
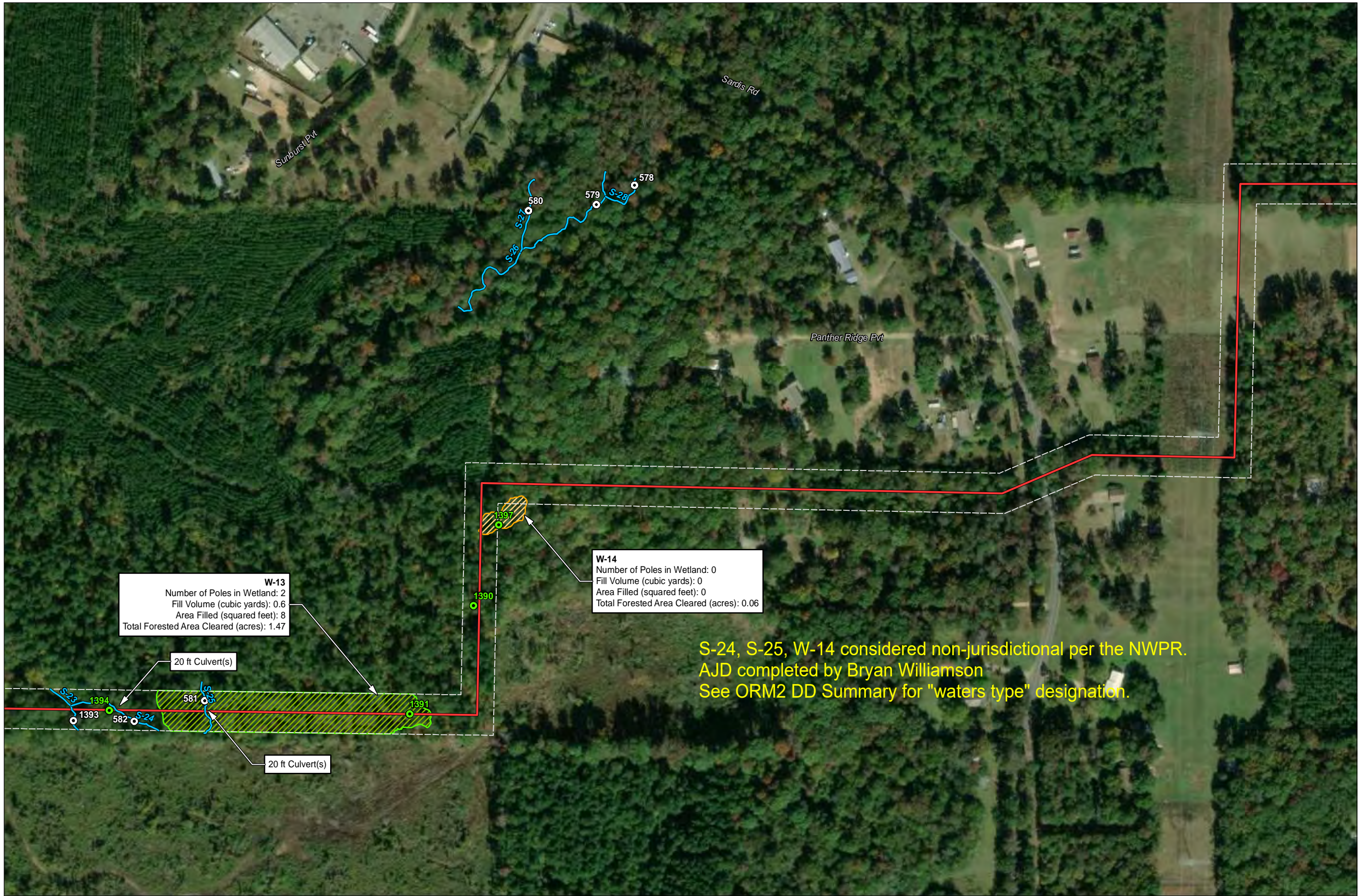
SCALE

SHOWN

REV. NO.

DWG. NO.

S13



W-13
Number of Poles in Wetland: 2
Fill Volume (cubic yards): 0.6
Area Filled (squared feet): 8
Total Forested Area Cleared (acres): 1.47

W-14
Number of Poles in Wetland: 0
Fill Volume (cubic yards): 0
Area Filled (squared feet): 0
Total Forested Area Cleared (acres): 0.06

S-24, S-25, W-14 considered non-jurisdictional per the NWPR.
AJD completed by Bryan Williamson
See ORM2 DD Summary for "waters type" designation.

- STREAM POINTS
- WETLAND DETERMINATION POINTS
- STREAMS
- TRANSMISSION LINE
- ROW
- PONDS
- WETLAND (PRESUMED NON-JURISDICTIONAL)
- WETLAND (PRESUMED JURISDICTIONAL)

NO	DATE	REVISION	BY	CK	APPR

DESIGNED BY SJH
CHECKED BY SJH
APPR. BY SJH
DRAWN BY IT



SHEET TITLE

AERIAL
SITE MAP

JOB NAME

SHAW TO SARDIS SOUTH
TRANSMISSION LINE
ARKANSAS ELECTRIC COOPERATIVE CORPORATION
SALINE COUNTY, ARKANSAS

PROJECT NO.

3008-18-302

DATE

01/04/2021

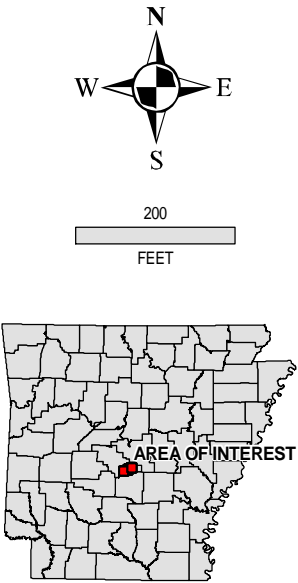
SCALE

SHOWN

REV. NO.

DWG. NO.

S14



W-15
Number of Poles in Wetland: 0
Fill Volume (cubic yards): 0
Area Filled (squared feet): 0
Total Forested Area Cleared (acres): 0.04

S-29, S-30, W-15 considered non-jurisdictional per the NWPR.
AJD completed by Bryan Williamson
See ORM2 DD Summary for "waters type" designation.

Styles Rd

Joe Dustin St

Whippoorwill Ln

20 ft Culvert(s)

20 ft Culvert(s)

- STREAM POINTS
- WETLAND DETERMINATION POINTS
- STREAMS
- TRANSMISSION LINE
- - - ROW
- PONDS
- WETLAND (PRESUMED NON-JURISDICTIONAL)
- WETLAND (PRESUMED JURISDICTIONAL)

NO	DATE	REVISION	BY	CK.	APPR.

DESIGNED BY SJH
CHECKED BY SJH
APPR. BY SJH
DRAWN BY IT



SHEET TITLE

AERIAL
SITE MAP

JOB NAME

SHAW TO SARDIS SOUTH
TRANSMISSION LINE
ARKANSAS ELECTRIC COOPERATIVE CORPORATION
SALINE COUNTY, ARKANSAS

PROJECT NO.

3008-18-302

DATE

01/04/2021

SCALE

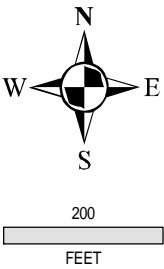
SHOWN

REV. NO.

DWG. NO.

S15

S-31, S-32, S-33, S-34 considered non-jurisdictional per the NWPR.
AJD completed by Bryan Williamson
See ORM2 DD Summary for "waters type" designation.



W-16
Number of Poles in Wetland: 0
Fill Volume (cubic yards): 0
Area Filled (squared feet): 0
Total Forested Area Cleared (acres): Avoided

W-17
Number of Poles in Wetland: 2
Fill Volume (cubic yards): 0.6
Area Filled (squared feet): 8
Total Forested Area Cleared (acres): 1.06

- STREAM POINTS
- WETLAND DETERMINATION POINTS
- STREAMS
- TRANSMISSION LINE
- - - ROW
- PONDS
- ▨ WETLAND (PRESUMED NON-JURISDICTIONAL)
- ▨ WETLAND (PRESUMED JURISDICTIONAL)

NO	DATE	REVISION	BY	CK.	APPR.

DESIGNED BY SJH
CHECKED BY SJH
APPR. BY SJH
DRAWN BY IT



SHEET TITLE

AERIAL
SITE MAP

JOB NAME

SHAW TO SARDIS SOUTH
TRANSMISSION LINE
ARKANSAS ELECTRIC COOPERATIVE CORPORATION
SALINE COUNTY, ARKANSAS

PROJECT NO.

3008-18-302

REV. NO.

DATE

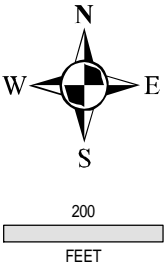
01/04/2021

SCALE

SHOWN

DWG. NO.

S16



W-18
Number of Poles in Wetland: 0
Fill Volume (cubic yards): 0
Area Filled (squared feet): 0
Total Forested Area Cleared (acres): 0.95

- STREAM POINTS
- WETLAND DETERMINATION POINTS
- STREAMS
- TRANSMISSION LINE
- ROW
- PONDS
- WETLAND (PRESUMED NON-JURISDICTIONAL)
- WETLAND (PRESUMED JURISDICTIONAL)

NO	DATE	REVISION	BY	CK.	APPR.

DESIGNED BY	SJH
CHECKED BY	SJH
APPR. BY	SJH
DRAWN BY	IT



SHEET TITLE

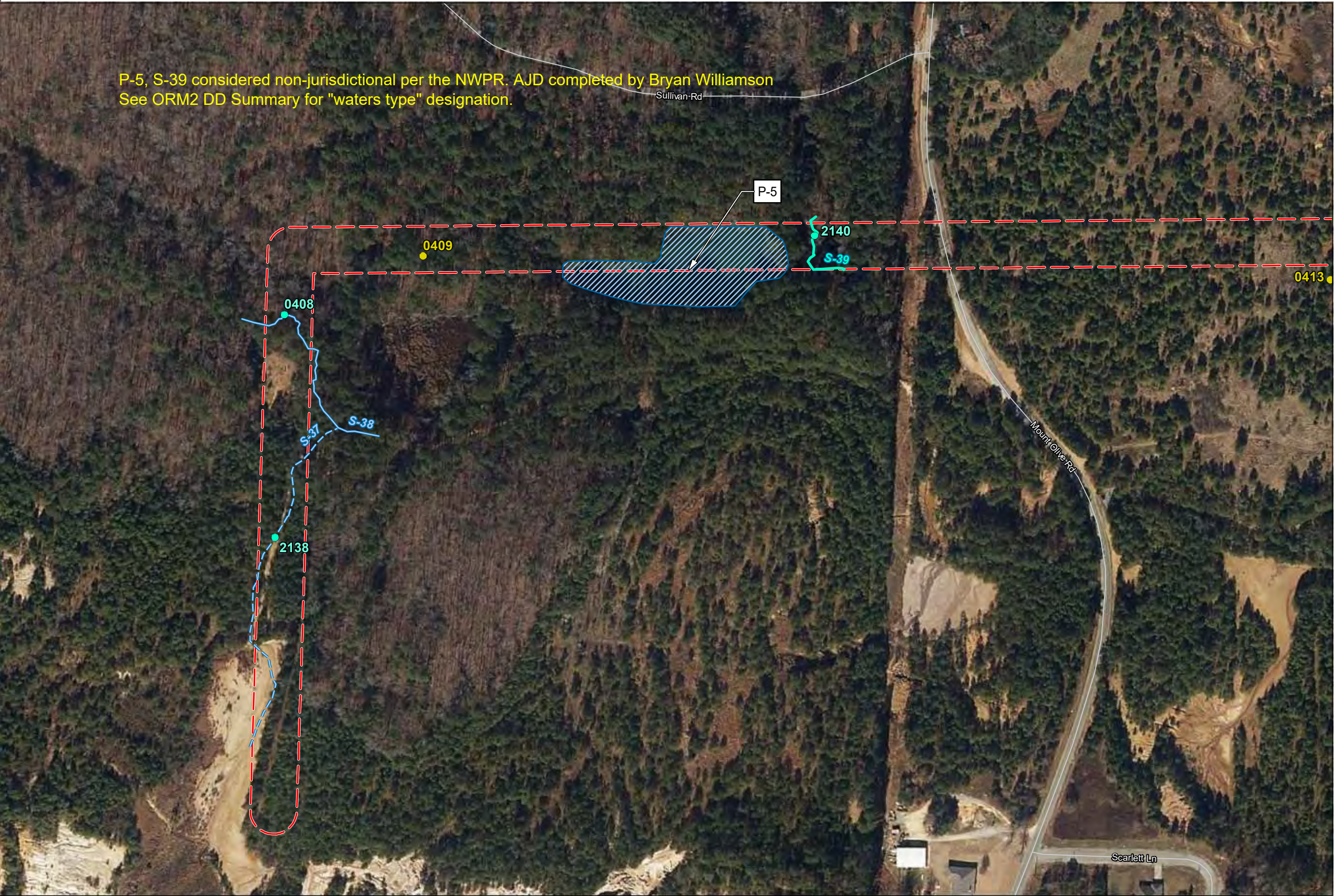
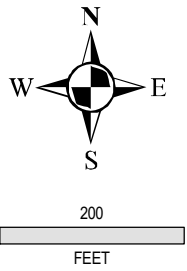
AERIAL
SITE MAP

JOB NAME

SHAW TO SARDIS SOUTH
TRANSMISSION LINE
ARKANSAS ELECTRIC COOPERATIVE CORPORATION
SALINE COUNTY, ARKANSAS

PROJECT NO.	3008-18-302	REV. NO.	
DATE	01/04/2021		
SCALE	SHOWN	DWG. NO.	S17

P-5, S-39 considered non-jurisdictional per the NWPR. AJD completed by Bryan Williamson
See ORM2 DD Summary for "waters type" designation.



Stream Data Point

Wetland Determination Point

Pond

Perennial Stream

Intermittent Stream

Ephemeral Stream

Right-of-Way

Wetland

Delineated in Original JD

Presumed Jurisdictional

Presumed Non-Jurisdictional

NO	DATE	REVISION	BY	CK.	APPR.

DESIGNED BY	SJH
CHECKED BY	SJH
APPR. BY	BJP
DRAWN BY	ALB

SHEET TITLE

AERIAL
DETAIL MAP #1

JOB NAME

SHAW TO SARDIS SOUTH
JURISDICTIONAL DETERMINATION
ADDENDUM
AECC
SALINE COUNTY, ARKANSAS

PROJECT NO.

3008-18-302

REV NO

DATE

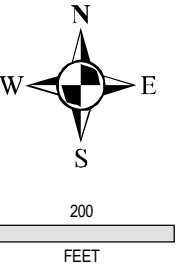
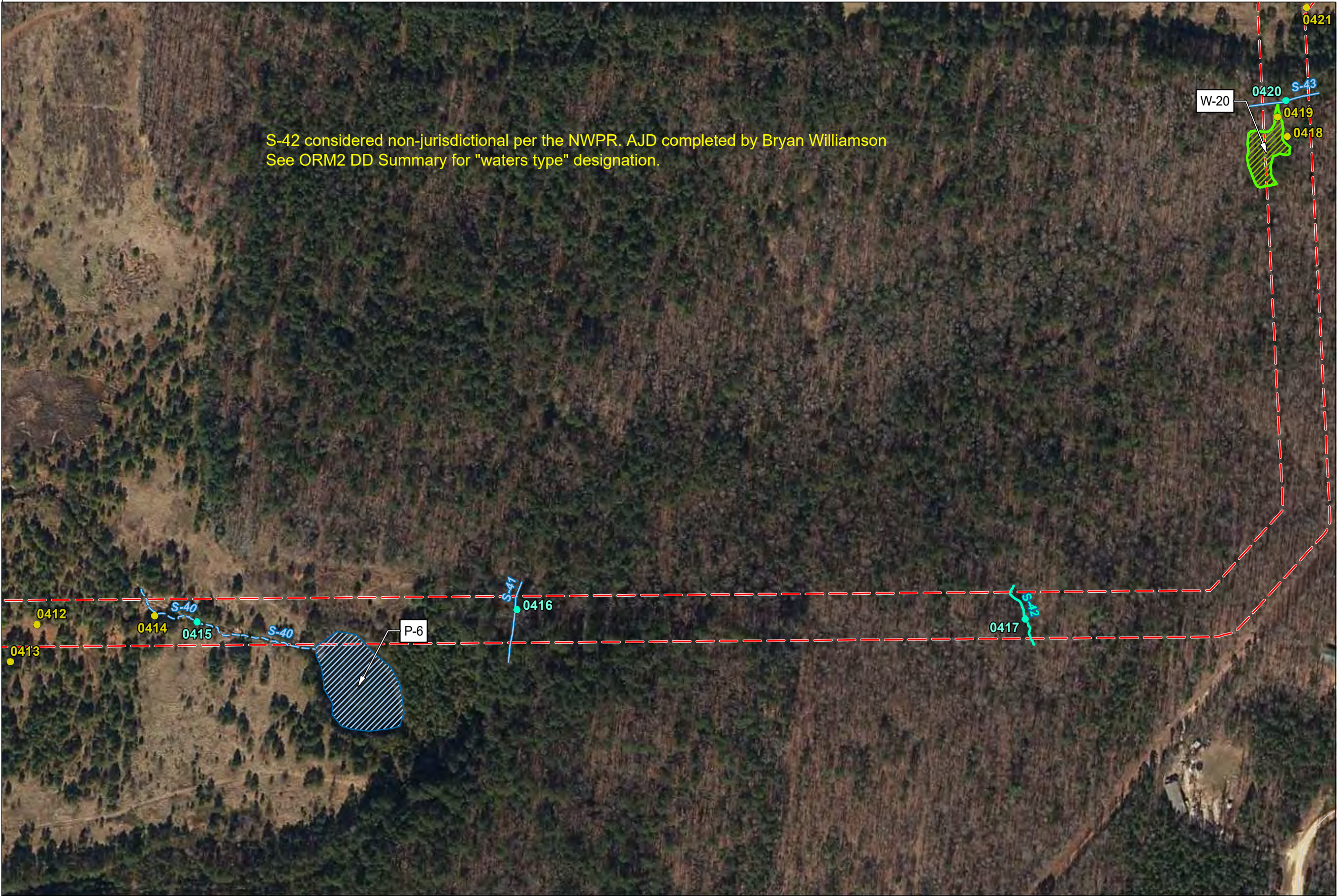
05/26/2021

SCALE

SHOWN

DWG NO.

S2



- Stream Data Point
- Wetland Determination Point
- ▨ Pond
- Perennial Stream
- - - Intermittent Stream
- Ephemeral Stream
- - - Right-of-Way
- Wetland**
- ▨ Delineated in Original JD
- ▨ Presumed Jurisdictional
- ▨ Presumed Non-Jurisdictional

NO	DATE	REVISION	BY	CK.	APPR.

DESIGNED BY	SJH
CHECKED BY	SJH
APPR. BY	BJP
DRAWN BY	ALB



SHEET TITLE

AERIAL
DETAIL MAP #2

JOB NAME

SHAW TO SARDIS SOUTH
JURISDICTIONAL DETERMINATION
ADDENDUM
AECC
SALINE COUNTY, ARKANSAS

PROJECT NO.

3008-18-302

DATE

05/26/2021

SCALE

SHOWN

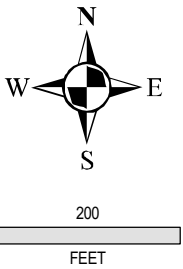
REV. NO.

DWG. NO.

S3



S-44, S-45, W-21 considered non-jurisdictional per the NWPR. AJD completed by Bryan Williamson
See ORM2 DD Summary for "waters type" designation.



● Stream Data Point

● Wetland Determination Point

▨ Pond

— Perennial Stream

- - - Intermittent Stream

— Ephemeral Stream

▭ Right-of-Way

Wetland

▭ Delineated in Original JD

▨ Presumed Jurisdictional

▨ Presumed Non-Jurisdictional

NO	DATE	REVISION	BY	CK.	APPR

DESIGNED BY SJH
CHECKED BY SJH
APPR BY BJP
DRAWN BY ALB



SHEET TITLE

AERIAL
DETAIL MAP #3

JOB NAME

SHAW TO SARDIS SOUTH
JURISDICTIONAL DETERMINATION
ADDENDUM
AECC
SALINE COUNTY, ARKANSAS

PROJECT NO.

3008-18-302

DATE

05/26/2021

SCALE

SHOWN

REV NO

DWG NO.

S4