



U.S. ARMY CORPS OF ENGINEERS  
REGULATORY PROGRAM  
APPROVED JURISDICTIONAL DETERMINATION FORM (INTERIM)  
NAVIGABLE WATERS PROTECTION RULE

**I. ADMINISTRATIVE INFORMATION**

Completion Date of Approved Jurisdictional Determination (AJD): 14-SEP-2020

ORM Number: MVK-2020-00619-TB

Associated JDs: N/A

Review Area Location<sup>1</sup>:

State/Territory: MS City: Osyka County/Parish/Borough: Pike County

Center Coordinates of Review Area: Alignment 1: Latitude 31.0164 Longitude -90.4758; Alignment 2: Latitude 31.0058, -90.46610

**II. FINDINGS**

**A. Summary:** Check all that apply. At least one box from the following list MUST be selected. Complete the corresponding sections/tables and summarize data sources.

- ☒ The review area is comprised entirely of dry land (i.e., there are no waters or water features, including wetlands, of any kind in the entire review area). Rationale: Websoil survey indicates the predominant soil types to be Savannah silt loam and Paden silt loam neither of which have a hydric rating. A review of the US Fish and Wildlife Service NWI Map didn't reveal jurisdictional wetlands or other waters of the U.S. within the footprint of the project. Vicksburg District Regulatory Viewer used as a supporting tool in this determination.
- ☐ There are "navigable waters of the United States" within Rivers and Harbors Act jurisdiction within the review area (complete table in section II.B).
- ☐ There are "waters of the United States" within Clean Water Act jurisdiction within the review area (complete appropriate tables in section II.C).
- ☐ There are waters or water features excluded from Clean Water Act jurisdiction within the review area (complete table in section II.D).

**B. Rivers and Harbors Act of 1899 Section 10 (§ 10)<sup>2</sup>**

§ 10 Name	§ 10 Size	§ 10 Criteria	Rationale for § 10 Determination
N/A	N/A	N/A	N/A

**C. Clean Water Act Section 404**

Territorial Seas and Traditional Navigable Waters ((a)(1) waters)<sup>3</sup>

(a)(1) Name	(a)(1) Size	(a)(1) Criteria	Rationale for (a)(1) Determination
N/A	N/A	N/A	N/A

Tributaries ((a)(2) waters):

(a)(2) Name	(a)(2) Size	(a)(2) Criteria	Rationale for (a)(2) Determination
N/A	N/A	N/A	N/A

Lakes and ponds, and impoundments of jurisdictional waters ((a)(3) waters):

(a)(3) Name	(a)(3) Size	(a)(3) Criteria	Rationale for (a)(3) Determination
-------------	-------------	-----------------	------------------------------------

<sup>1</sup> Map(s)/Figure(s) are attached to the AJD provided to the requestor.

<sup>2</sup> If the navigable water is not subject to the ebb and flow of the tide or included on the District's list of Rivers and Harbors Act Section 10 navigable waters list, do NOT use this document to make the determination. The District must continue to follow the procedure outlined in 33 CFR part 329.14 to make a Rivers and Harbors Act Section 10 navigability determination.

<sup>3</sup> A stand-alone TNW determination is completed independently of a request for an AJD. A stand-alone TNW determination is conducted for a specific segment of river or stream or other type of waterbody, such as a lake, where independent upstream or downstream limits or lake borders are established. A stand-alone TNW determination should be completed following applicable guidance and should NOT be documented on the AJD form.

<sup>4</sup> Some excluded waters, such as (b)(2) and (b)(4), may not be specifically identified on the AJD form unless a requestor specifically asks a Corps district to do so. Corps Districts may, in case-by-case instances, choose to identify some or all of these waters within the review area.

<sup>5</sup> Because of the broad nature of the (b)(1) exclusion and in an effort to collect data on specific types of waters that would be covered by the (b)(1) exclusion, four sub-categories of (b)(1) exclusions were administratively created for the purposes of the AJD Form. These four sub-categories are not new exclusions, but are simply administrative distinctions and remain (b)(1) exclusions as defined by the NWPR.



U.S. ARMY CORPS OF ENGINEERS  
REGULATORY PROGRAM  
APPROVED JURISDICTIONAL DETERMINATION FORM (INTERIM)  
NAVIGABLE WATERS PROTECTION RULE

N/A	N/A	N/A	N/A
-----	-----	-----	-----

Adjacent wetlands ((a)(4) waters):

(a)(4) Name	(a)(4) Size	(a)(4) Criteria	Rationale for (a)(4) Determination
N/A	N/A	N/A	N/A

**D. Excluded Waters or Features**

Excluded waters ((b)(1) – (b)(12))<sup>4</sup>:

Exclusion Name	Exclusion Size	Exclusion <sup>5</sup>	Rationale for Exclusion Determination
N/A	N/A	N/A	N/A

**III. SUPPORTING INFORMATION**

**A. Select/enter all resources** that were used to aid in this determination and attach data/maps to this document and/or references/citations in the administrative record, as appropriate.

- ☒ Information submitted by, or on behalf of, the applicant/consultant: *Title(s) and date(s).*  
*Request for Determination submitted by The Ferguson Group, LLC on behalf of the Town of Osyka, Mississippi 13 August 2020 (Received by Regulatory on 18 August 2020).*  
This information (is/is not/is and is not) sufficient for purposes of this AJD. *Submitted info was sufficient to ascertain jurisdiction.*  
Rationale: *N/A or describe rationale for insufficiency (including partial insufficiency).*
- ☐ Data sheets prepared by the Corps: *Title(s) and/or date(s).*
- ☐ Photographs: *(NA, aerial, other, aerial and other) Title(s) and/or date(s).*
- ☐ Corps Site visit(s) conducted on: *Date(s).*
- ☐ Previous Jurisdictional Determinations (AJDs or PJDs): *ORM Number(s) and date(s).*
- ☐ Antecedent Precipitation Tool: *provide detailed discussion in Section III.B.*
- ☒ USDA NRCS Soil Survey: *Title(s) and/or date(s).* *WebSoil Survey reviewed 9/14/2020*
- ☒ USFWS NWI maps: *Title(s) and/or date(s).*
- ☒ USGS topographic maps: *Title(s) and/or date(s).* *1:24,000 Osyka*

**Other data sources used to aid in this determination:**

Data Source (select)	Name and/or date and other relevant information
USGS Sources	N/A.
USDA Sources	N/A.
NOAA Sources	N/A.
USACE Sources	<i>Vicksburg Regulatory Viewer, ORM2</i>
State/Local/Tribal Sources	N/A.
Other Sources	<i>FEMA Flood Hazard Map, Google Earth Pro, Acme Mapper</i>

**B. Typical year assessment(s):** *N/A* or provide typical year assessment for each relevant data source used to support the conclusions in the AJD.

<sup>1</sup> Map(s)/Figure(s) are attached to the AJD provided to the requestor.

<sup>2</sup> If the navigable water is not subject to the ebb and flow of the tide or included on the District's list of Rivers and Harbors Act Section 10 navigable waters list, do NOT use this document to make the determination. The District must continue to follow the procedure outlined in 33 CFR part 329.14 to make a Rivers and Harbors Act Section 10 navigability determination.

<sup>3</sup> A stand-alone TNW determination is completed independently of a request for an AJD. A stand-alone TNW determination is conducted for a specific segment of river or stream or other type of waterbody, such as a lake, where independent upstream or downstream limits or lake borders are established. A stand-alone TNW determination should be completed following applicable guidance and should NOT be documented on the AJD form.

<sup>4</sup> Some excluded waters, such as (b)(2) and (b)(4), may not be specifically identified on the AJD form unless a requestor specifically asks a Corps district to do so. Corps Districts may, in case-by-case instances, choose to identify some or all of these waters within the review area.

<sup>5</sup> Because of the broad nature of the (b)(1) exclusion and in an effort to collect data on specific types of waters that would be covered by the (b)(1) exclusion, four sub-categories of (b)(1) exclusions were administratively created for the purposes of the AJD Form. These four sub-categories are not new exclusions, but are simply administrative distinctions and remain (b)(1) exclusions as defined by the NWPR.



U.S. ARMY CORPS OF ENGINEERS  
REGULATORY PROGRAM  
APPROVED JURISDICTIONAL DETERMINATION FORM (INTERIM)  
NAVIGABLE WATERS PROTECTION RULE

**C. Additional comments to support AJD:** N/A or provide additional discussion as appropriate. Based upon the information furnished and our internal review, PM Dixon has determined that there are no jurisdictional wetlands or other waters located within the limits of the project site.

<sup>1</sup> Map(s)/Figure(s) are attached to the AJD provided to the requestor.

<sup>2</sup> If the navigable water is not subject to the ebb and flow of the tide or included on the District's list of Rivers and Harbors Act Section 10 navigable waters list, do NOT use this document to make the determination. The District must continue to follow the procedure outlined in 33 CFR part 329.14 to make a Rivers and Harbors Act Section 10 navigability determination.

<sup>3</sup> A stand-alone TNW determination is completed independently of a request for an AJD. A stand-alone TNW determination is conducted for a specific segment of river or stream or other type of waterbody, such as a lake, where independent upstream or downstream limits or lake borders are established. A stand-alone TNW determination should be completed following applicable guidance and should NOT be documented on the AJD form.

<sup>4</sup> Some excluded waters, such as (b)(2) and (b)(4), may not be specifically identified on the AJD form unless a requestor specifically asks a Corps district to do so. Corps Districts may, in case-by-case instances, choose to identify some or all of these waters within the review area.

<sup>5</sup> Because of the broad nature of the (b)(1) exclusion and in an effort to collect data on specific types of waters that would be covered by the (b)(1) exclusion, four sub-categories of (b)(1) exclusions were administratively created for the purposes of the AJD Form. These four sub-categories are not new exclusions, but are simply administrative distinctions and remain (b)(1) exclusions as defined by the NWPR.




# Vicksburg District Regulatory Viewers


- Regulatory Viewer
- Regulatory Map
- Compliance Viewer
- Cumulative Impacts Viewer
- Collector Offline
- Survey

## Vicksburg District Regulatory Viewer

+

-




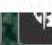



31.0164, -90.4737

Show search results for 31.0164...

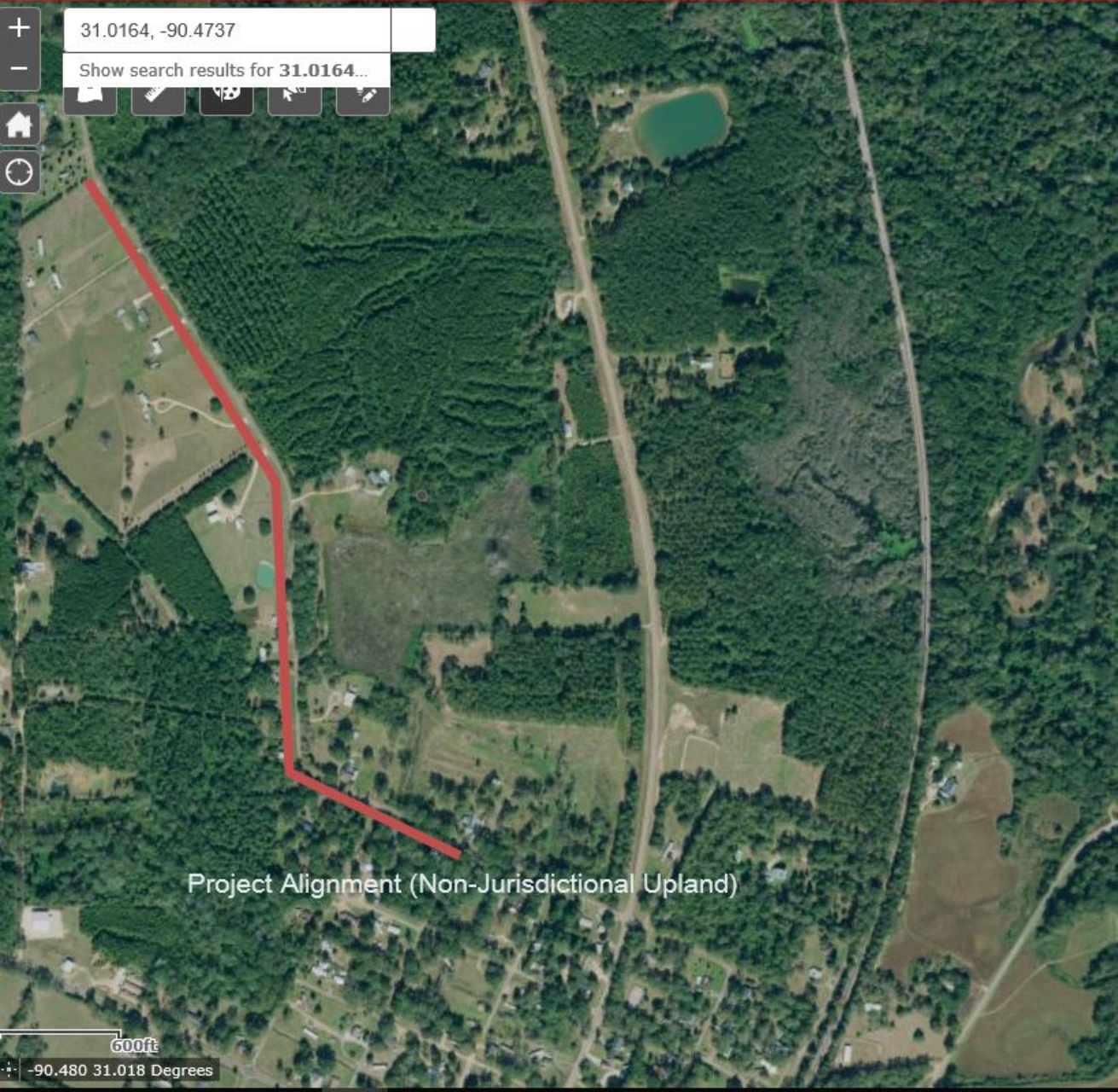












Project Alignment (Non-Jurisdictional Upland)



# Vicksburg District Regulatory Viewers

- Regulatory Viewer
- Regulatory Map
- Compliance Viewer
- Cumulative Impacts Viewer
- Collector Offline
- Survey12



## Vicksburg District Regulatory Viewer

